

U.S. PUBLIC LAND SURVEY MONUMENT RECORD

(Prepared and as required by S. A-E 7.08 WI Administrative Code)

The EAST 1/4 corner of Section 8, T. 31 N., R. 12 E., Langlade County, WI
 Corner was (check all that apply)

- Restored through acceptance of an obliterated evidence location.
- Restored through acceptance of a found perpetuated location.
- Determined to be lost and re-established through proportionate methods. (show bearings and distances to PLSS corners used for proportioning.)
- Restored/recovered/re-established in a location that differs from a previously established position. (Show difference in plan view below.)
- Check here if additional information is shown on the reverse side of this form.

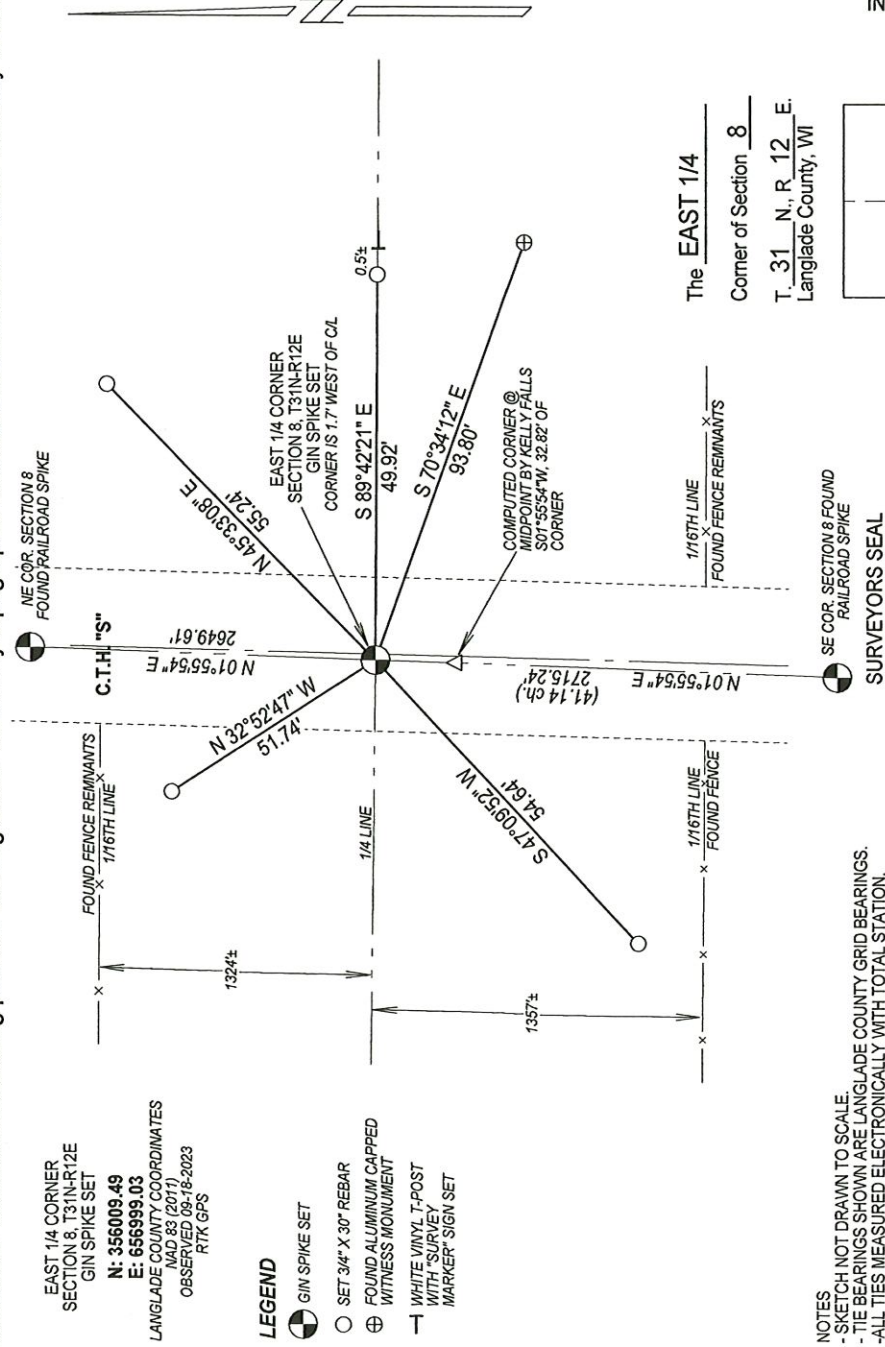
Describe record evidence, recovered physical evidence, occupational evidence, testimonial evidence, and all other evidence considered in the recovery/restoration of the corner.

1857 - Original corner established by J. McBride - bearing trees: Elm, 12", N85°W, 17 links; Elm, 12", N60°E, 42 links.
 Date unknown - Fieldbook 94 Page 111, Hutchinson ran north between Sections 8 and 9 from the SE corner of Section 8. He "hit stake" at distance of 41.14 chains from Southeast Corner to East 1/4.
 Date unknown - Langlade County Highway Department C. T. H. "S" right-of-way map #40108, shows this corner "no corner found", "based on measurements of Hutchinson's 1910 survey." This position matches the distance from the Southeast Corner of Section 8 called out by Hutchinson in FB 94 Pg 111 (41.14 chains = 2715.24 feet). Highway drawing also notes fencelines South of 1/4 corner at apparent 1/16th corner.
 1988 - William Kelly found "no evidence of Hutchinson's corner", "probably destroyed by road construction." Kelly set corner at midpoint between SE and NE Corner of Section 8. Kelly set a 2" iron pipe at his location, made ties and filed a tie sheet.
 2023 - I did not find corner set by Kelly. I searched at 1/16th corners north and south of 1/4 corner. Found old existing East and West fencelines at 1/16th corner south of East 1/4 Corner. Also found old fence corner west of 1/16th corner north of East 1/4 Corner. These fences match with a "split" using distance from Southeast Corner called for by Hutchinson.

Physical description of the monument set:

I set a gin spike at Hutchinson's record distance (41.14 chains) from Southeast Corner, and on line between the Southeast and Northeast Corners, tied out as shown below.

Describe the accessories used to perpetuate the location of the corner. Include a plan view drawing and indicate accessories found/set. Describe measuring point on bearing trees. Show any topographic features that would aid in future recovery of the corner.



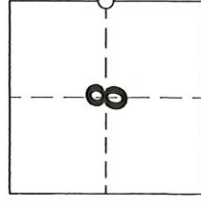
NOTES
 - SKETCH NOT DRAWN TO SCALE.
 - TIE BEARINGS SHOWN ARE LANGLADE COUNTY GRID BEARINGS.
 - ALL TIES MEASURED ELECTRONICALLY WITH TOTAL STATION.



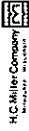
I, Michael J. Hoffman, certify that the corner location shown on this record was determined by me or under my direction and control and that this U.S. Public Land Survey Monument Record is correct and complete to the best of my knowledge and belief.

Michael J. Hoffman 09-21-2023
 Signature Date

The EAST 1/4
 Corner of Section 8
 T. 31 N., R. 12 E.
 Langlade County, WI



○ = Location of corner



Stock No. 26273

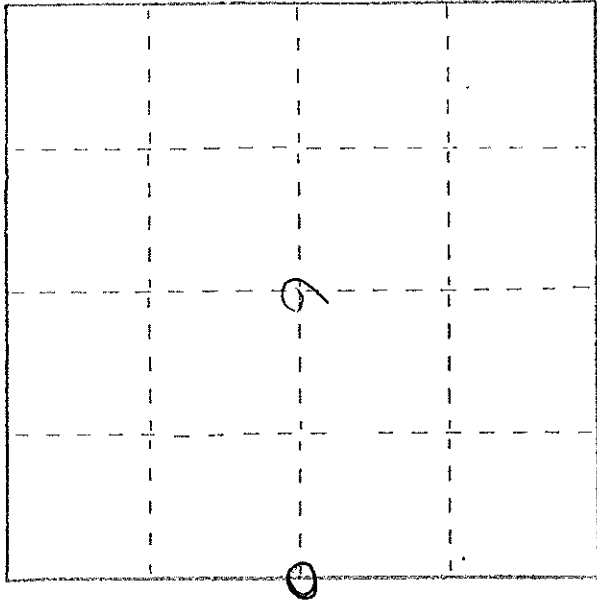
U. S. PUBLIC LAND SURVEY MONUMENT RECORD

INSTRUCTIONS: This record shall show the location of the corner and shall include all of the following nine elements (a through i).

(a) Identify the corner by reference to the U.S. public land survey system.

O = Corner monument restored.

ORIGINAL CORNER SET
BY JAMES MCBRIDE
IN JULY 1857
CORNER PERPETUATED
BY M. HUTCHINSON



T 31 N R 12 E

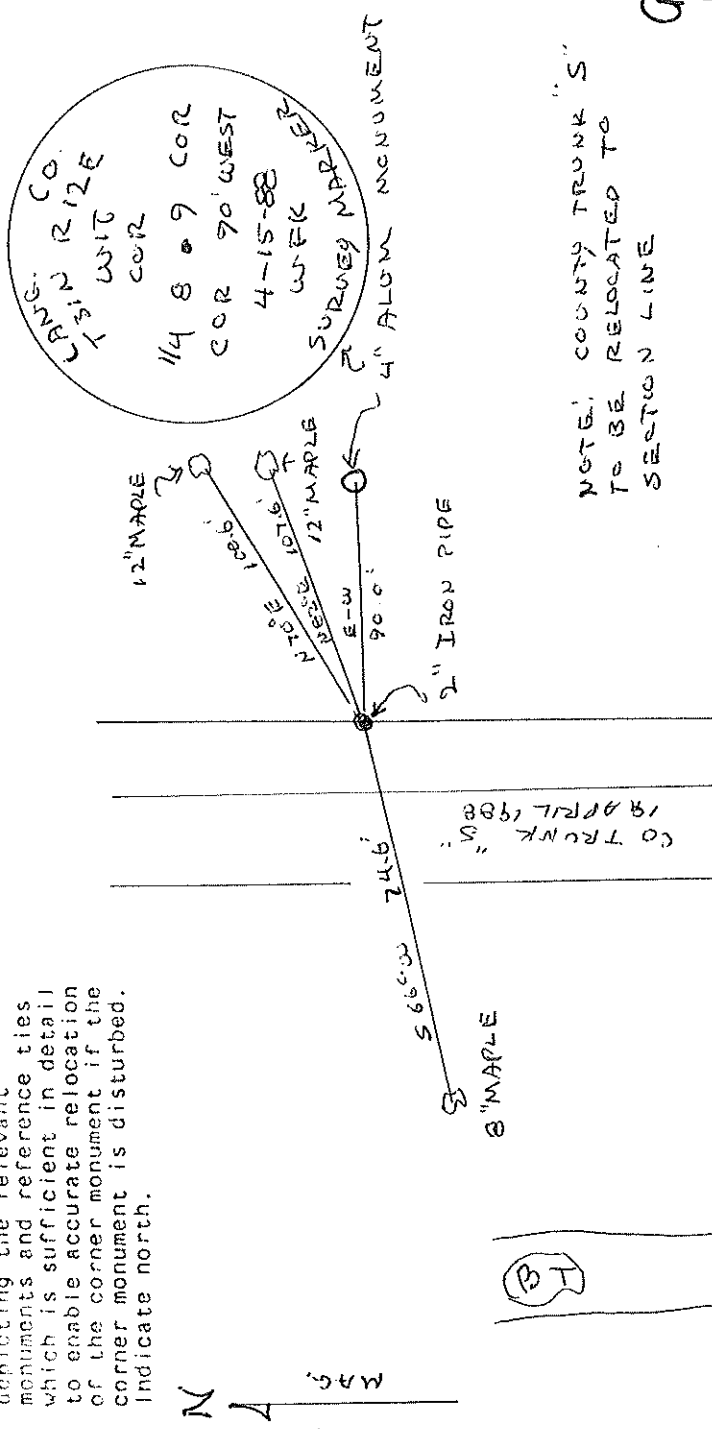
(b) Describe any record evidence, monument evidence, occupational evidence, testimonial evidence, or any other material evidence you considered, and whether the monument was found or placed.

NO EVIDENCE OF HUTCHINSONS CORNER LOCATED. PROBABLY DESTROYED BY ROAD CONSTRUCTION

9. SET CORNER AT MID POINT BETWEEN SW AND NW SECT. CORNERS.

(c) In the plan view drawing below, provide reference ties to at least 4 witness monuments, or, if the location is within a municipality, to at least 2 witness monuments. (Witness monuments shall be made of concrete, natural stone, iron or other equally durable material.) Describe witness monuments.

(d) Show a plan view drawing depicting the relevant monuments and reference ties which is sufficient in detail to enable accurate relocation of the corner monument if the corner monument is disturbed. Indicate north.



NOTE: COUNTY TRUNK "S" TO BE RELOCATED TO SECTION LINE

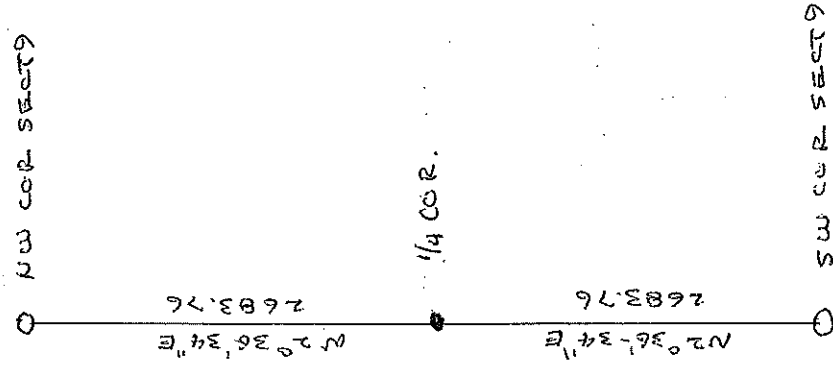
(e) Describe any material discrepancy between the location of the corner as restored or reestablished and the location of that corner as previously restored or reestablished by distance and direction. Show the discrepancy on the plan view drawing under (d), above. Show the distances between the corner as previously restored or reestablished and (1) the corner as restored or reestablished, and (2) to at least 2 of the witness monuments shown on the drawing in (d), above.

NO USE

(f) Was the corner restored through acceptance of (1) an obliterated evidence location, or, (2) a found perpetuated location? NO

(g&h) Was the corner reestablished through lost corner proportionate methods? If so, show the method, including the directions and distances to other public land survey corners used as evidence or used for proportioning in determining the corner location?

SEE SKETCH



(1) WILLIAM F. KELLY

(Type or print name) certify that the corner location shown on this record was determined by me or under my direction and control and that this U.S. Public Land Survey Monument Record is correct and complete to the best of my knowledge and belief.

Signature William F. Kelly

Date 4-19-88

