

CERTIFIED LAND CORNER RESTORATION

Index No. 2-5

State of Wisconsin }
 County of LANGLADE } ss.

History of original corner establishment:

I WILLIAM F. KELLY, do hereby certify that on the 21ST day of JUNE, 1978, I found evidence of the SOUTH-EAST corner of SECTION 7 Township 31, North, Range 12 E, Fourth Principal Meridian, as described hereon; and that from this evidence I established a new monument and accessories as described hereon to perpetuate the original location of this corner.

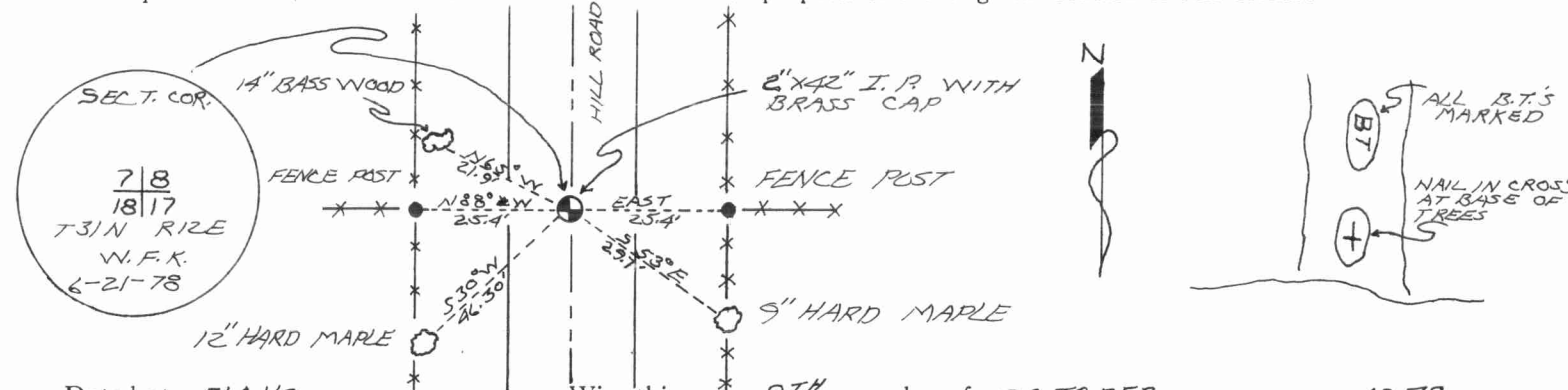
Description of corner evidence found:

LOCATED STONE IN ROAD MIDWAY BETWEEN FENCE LINE CORNER POSTS.
SET 2"X42" IRON PIPE WITH BRASS CAP.
MARKED NEW BEARING TREES.

Resident witnesses:

.....

Description of monument and accessories I established to perpetuate the original location of this corner.



Dated at ELCHO, Wis., this 9TH day of OCTOBER, 1978.

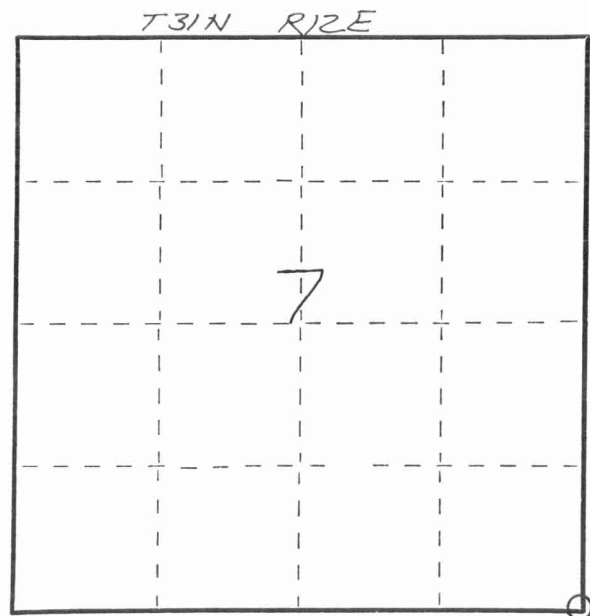
Signature..... Title COUNTY SURVEYOR Registration No. 5-1098
 (County Surveyor, Registered Land Surveyor, or other duly authorized official)

Office of Register of Deeds, County of....., I hereby certify that the within instrument was filed in this office for record on the..... day of....., 19..... at..... o'clock..... M.

.....
 (Register of Deeds)

By..... Deputy

FORM 985 H. C. MILLER CO., MILWAUKEE



○ = Corner monument restored.

