

U.S. PUBLIC LAND SURVEY MONUMENT RECORD

(Prepared and as required by S. A-E 7.08 WI Administrative Code)

The W 1/4 corner of Section 5, T. 31 N., R. 12 E., Langlade County, WI

Corner was: (check all that apply)

- Restored through acceptance of an obliterated evidence location.
- Restored through acceptance of a found perpetuated location.
- Determined to be lost and re-established through proportionate methods.
(Show bearings and distances to PLSS corners used for proportioning.)
- Restored/recovered/reestablished in a location that differs from a previously established position. (Show difference in plan view below.)

43112062000

- Check here if additional information is shown on the reverse side of this form.

Describe record evidence, recovered physical evidence, occupational evidence, testimonial evidence and all other evidence considered in the recovery/restoration of the corner.

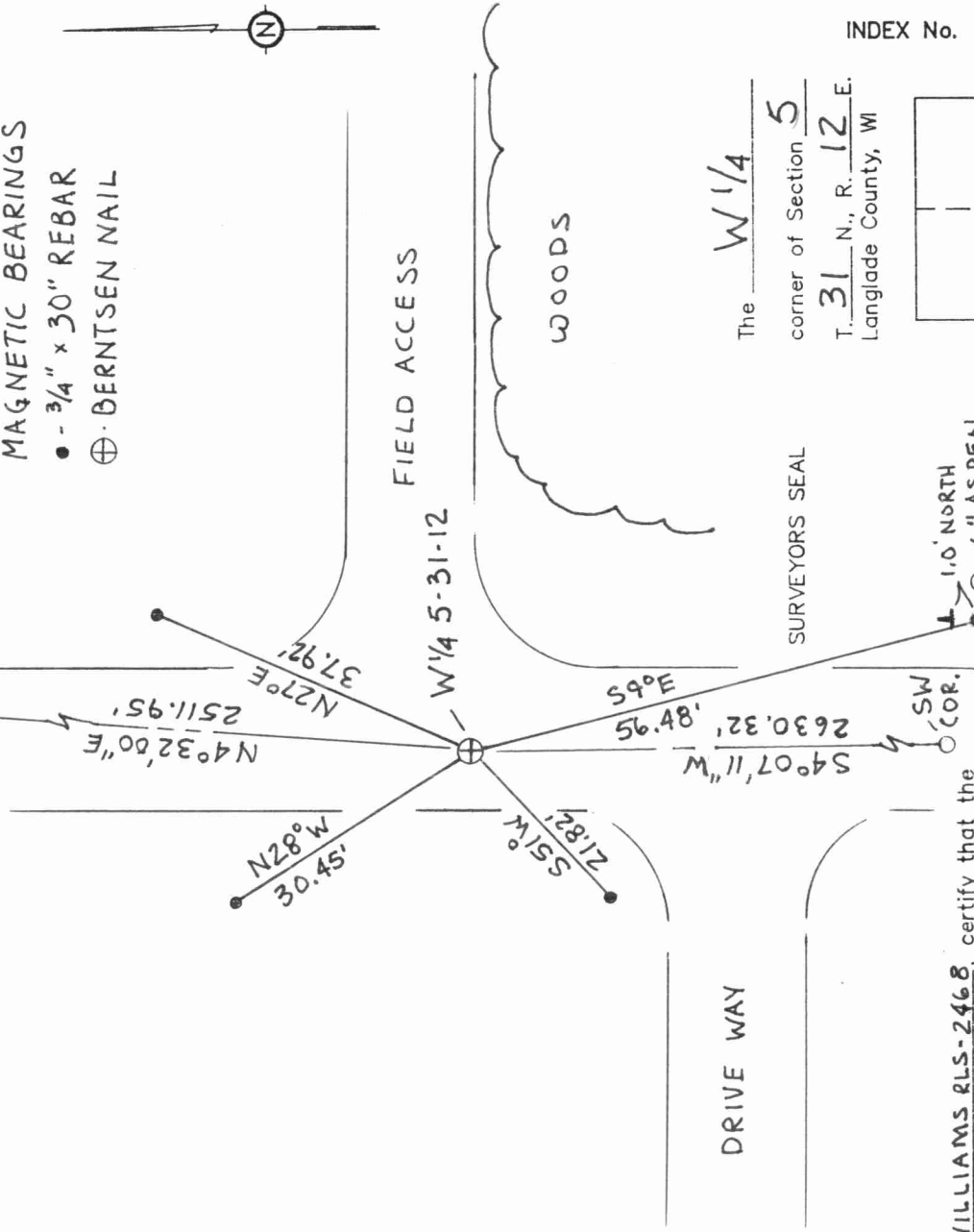
ORIGINAL CORNER SET IN 1857 BY JAMES MCBRIDE, BT'S ELM 6 N69E 101ks. ORIG. DIST. SEC. COR. NORTH TO 1/4 COR. 40 CHAINS. ELM 8 S51W 121ks. ORIG. DIST SEC. COR SOUTH TO 1/4 COR. 38.20 CHAINS. NO EVIDENCE OF THIS CORNER FOUND, BUT A TREE LINE TO EAST, THE NORTH 40 HAS A FIELD LINE EAST, AND THE SOUTH 40 HAS A TREE LINE WEST. ALL IN GOOD AGREEMENT WITH ORIGINAL DISTANCES. SET CORNER AT ROAD & LINE AND WITH SINGLE PROPORTIONAL METHOD.

Physical description of the monument set:

SET BERTNSEN NAIL FOR CORNER & SET FOUR 3/4" x 30" REBAR WITNESSES AND ONE WHITE VINYL POST 1.0' NORTH OF SE WITNESS.

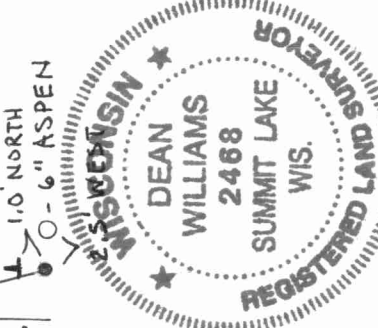
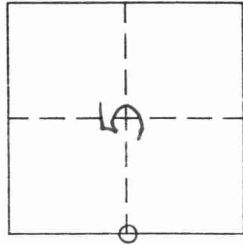
Describe the accessories used to perpetuate the location of the corner. Include a plan view drawing and indicate accessories found/set. Describe measuring point on bearing trees. Show any topographic features that would aid in future recovery of the corner.

- - NW COR.
- - 3/4" x 30" REBAR
- ⊕ - BERTNSEN NAIL
- SCALE 1" = 20'
- MAGNETIC BEARINGS



The W 1/4 corner of Section 5 T. 31 N., R. 12 E. Langlade County, WI

INDEX No. 05



I, DEAN A. WILLIAMS RLS-2468, certify that the corner location shown on this record was determined by me or under my direction and control and that this U.S. Public Land Survey Monument Record is correct and complete to the best of my knowledge and belief.

Dean Williams 5/23/2002
Signature Date

