

U.S. PUBLIC LAND SURVEY MONUMENT RECORD

(Prepared and as required by S. A-E 7.08 WI Administrative Code)

The SOUTH 1/4 corner of Section 6, T. 31 N., R. 12 E., Langlade County, WI
 Corner was (check all that apply)

- Restored through acceptance of an obliterated evidence location.
- Restored through acceptance of a found perpetuated location.
- Determined to be lost and re-established through proportionate methods. (show bearings and distances to PLSS corners used for proportioning.)
- Restored/recovered/re-established in a location that differs from a previously established position. (Show difference in plan view below.)
- Check here if additional information is shown on the reverse side of this form.

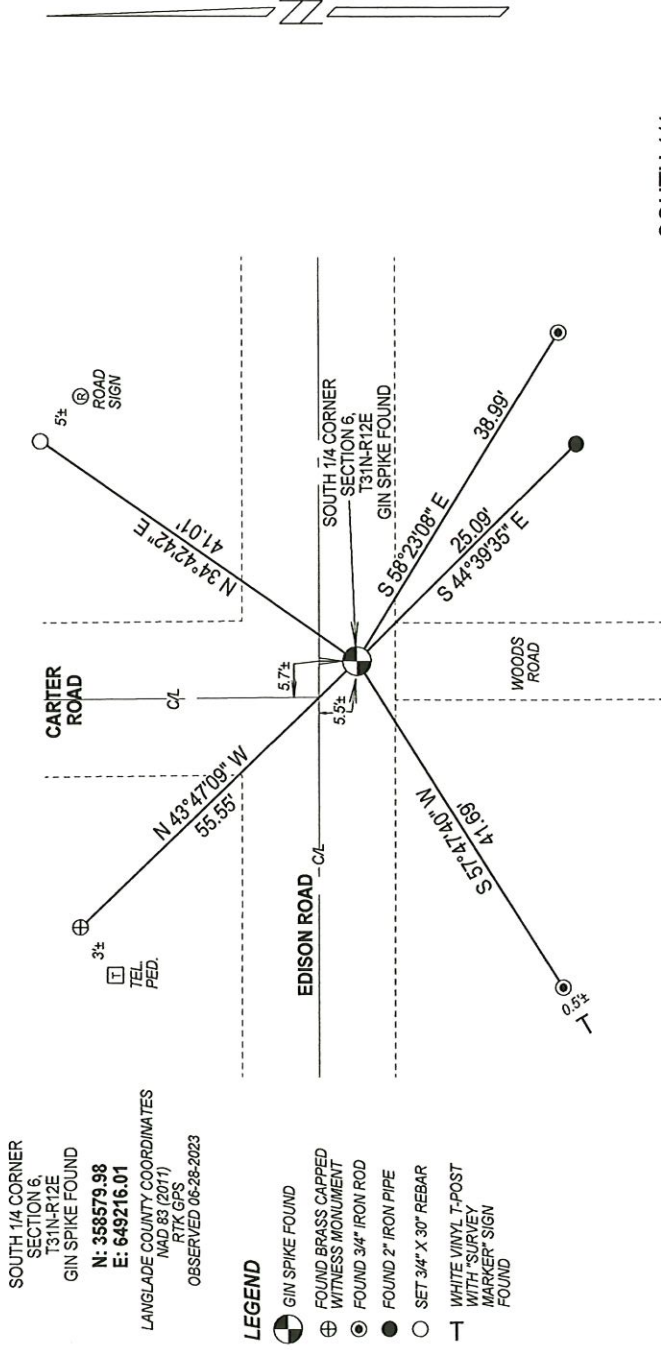
Describe record evidence, recovered physical evidence, occupational evidence, testimonial evidence, and all other evidence considered in the recovery/restoration of the corner.

1857 - Original corner established by J. McBride - bearing trees: Elm, 10", N94°E; 12 links; Maple, 6", S5°W, 25 links.
 1905 - Fieldbook 149 page 20 - Baker references corner as "stone with 'x' buried in road."
 1918 - Fieldbook 94 page 172 - Hutchinson references corner as "stone with 'x' on top, pump point 4' long driven on west side of stone."
 1978 - Wesley Tradewell "found 10" x 7" stone with 'x' on top, 2" diameter iron pipe on west side of stone. Stone is 17" below surface, pipe is 10" below surface." Tradewell set a 7" spike over 'x' in stone, two brass cap witness corners and filed a tie sheet.
 2015 - Charley Brinkmeier found one good tie of Tradewells, he found the spike under blacktop and set a gin spike at road surface. Brinkmeier set additional ties and filed a tie sheet.
 2023 - I found gin spike as set by Brinkmeier at corner location. Verified corner location from ties.

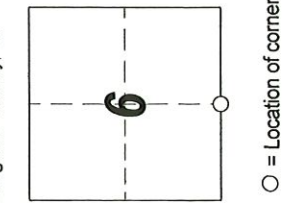
Physical description of the monument set:

Accepted found gin spike as corner location, tied out as shown below.

Describe the accessories used to perpetuate the location of the corner. Include a plan view drawing and indicate accessories found/set. Describe measuring point on bearing trees. Show any topographic features that would aid in future recovery of the corner.



The SOUTH 1/4
 Corner of Section 6
 T. 31 N., R. 12 E.
 Langlade County, WI



INDEX No. **E - 3** 4311206 0020

SURVEYORS SEAL



I, Michael J. Hoffman certify that the corner location shown on this record was determined by me or under my direction and control and that this U.S. Public Land Survey Monument Record is correct and complete to the best of my knowledge and belief.

Michael J. Hoffman 09-12-2023 Date
 Signature

NOTES
 - SKETCH NOT DRAWN TO SCALE.
 - TIE BEARINGS SHOWN ARE LANGLADE COUNTY GRID BEARINGS.
 - ALL TIES MEASURED ELECTRONICALLY WITH TOTAL STATION.

4311206 0020 2015

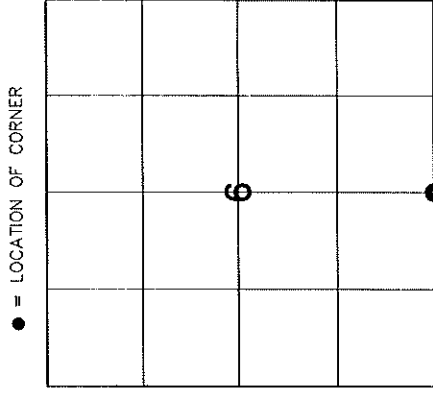
U.S. PUBLIC LAND SURVEY MONUMENT RECORD

HISTORY OF ORIGINAL CORNER ESTABLISHMENT AND SUBSEQUENT RESTORATION AND DESCRIPTION OF ANY RECORD, MONUMENT OCCUPATIONAL, TESTIMONIAL OR OTHER EVIDENCE CONSIDERED:

THE ORIGINAL CORNER WAS SET BY McBRIDE IN 1857 WITH THE ORIGINAL BEARING TREES OF:
 10" ELM - N94°E 12 LINKS
 6" MAPLE - S5°W 25 LINKS

1918 - HUTCHINSON SET A PIPE 10" BELOW THE SURFACE NEXT TO STONE
 1978 - TRADEWELL FOUND THE STONE AND THE PIPE AND SET A 7" SPIKE OVER THE STONE.

WE FOUND ONE GOOD TIE AND ONE BENT. ALSO FOUND THE SPIKE UNDER THE BLACKTOP. SET A GEAR SPIKE TO BRING IT FLUSH WITH THE NEW BLACKTOP



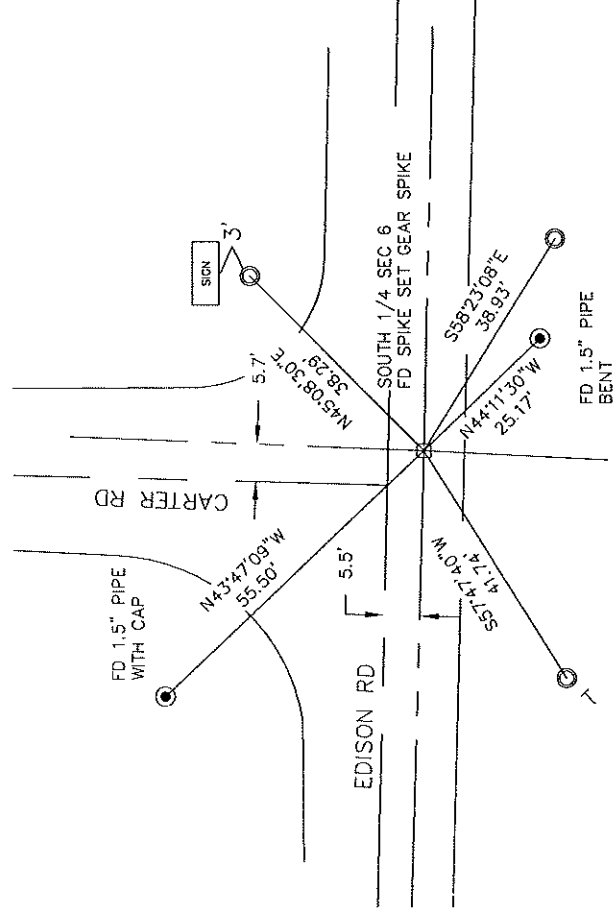
● = LOCATION OF CORNER

SECTION 6
 TOWNSHIP 31 NORTH, RANGE 12 EAST
 TOWN OF POLAR
 LANGLADE COUNTY, WISCONSIN

CORNER WAS: (CHECK ALL THAT APPLY)

- RESTORED THROUGH ACCEPTANCE OF AN OBLITERATED EVIDENCE LOCATION
- RESTORED THROUGH ACCEPTANCE OF A FOUND PERPETUATED LOCATION
- CONSIDERED A LOST CORNER AND REESTABLISHED THROUGH LOST CORNER PROPORTIONATE METHODS (INCLUDE A PLAN VIEW DRAWING SHOWING DISTANCES AND DIRECTIONS TO OTHER PUBLIC LAND SURVEY CORNERS USED FOR PROPORTIONING AND DETERMINING THE CORNER LOCATION)
- RESTORED OR REESTABLISHED IN A LOCATION THAT DIFFERS FROM A PREVIOUS RESTORATION OR REESTABLISHMENT (INCLUDE A PLAN VIEW DRAWING AND INDICATE WHAT WAS SET AND/OR FOUND)
- CHECK IF THERE IS ADDITIONAL INFORMATION ON BACK

DESCRIBE THE MONUMENT AND ACCESSORIES USED TO PERPETUATE THE LOCATION OF THE CORNER. (INCLUDE A PLAN VIEW DRAWING AND INDICATE WHAT WAS SET AND/OR FOUND) ALSO INCLUDE FOUR TIES TO THE SECTION CORNER AND DESCRIPTION OF THE TIES.



SET 3/4"X 24" IRON PIPES AT ALL TIE LOCATIONS

BEARINGS REFERENCED TO THE LANDGLADE COUNTY COORDINATE SYSTEM

T - SET 6' WHITE T-POST

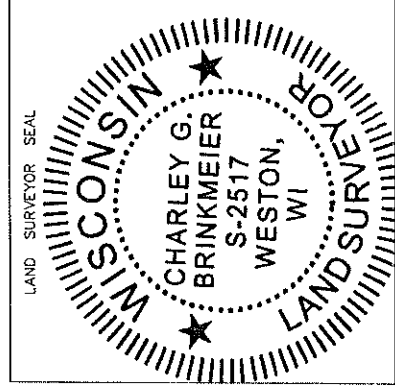


CHARLEY G. BRINKMEIER

(TYPE OR PRINT NAME) CERTIFY THAT THE CORNER LOCATION SHOWN ON THIS RECORD WAS DETERMINED BY ME OR UNDER MY DIRECTION AND CONTROL AND THAT THIS U.S. PUBLIC LAND SURVEY MONUMENT RECORD IS CORRECT AND COMPLETE TO THE BEST OF MY KNOWLEDGE AND BELIEF.

Charley G. Brinkmeier
 SIGNATURE

8-30-15
 DATE



E-3 31-12

INDEX NO.

CERTIFIED LAND CORNER RESTORATION

Index No. F-3

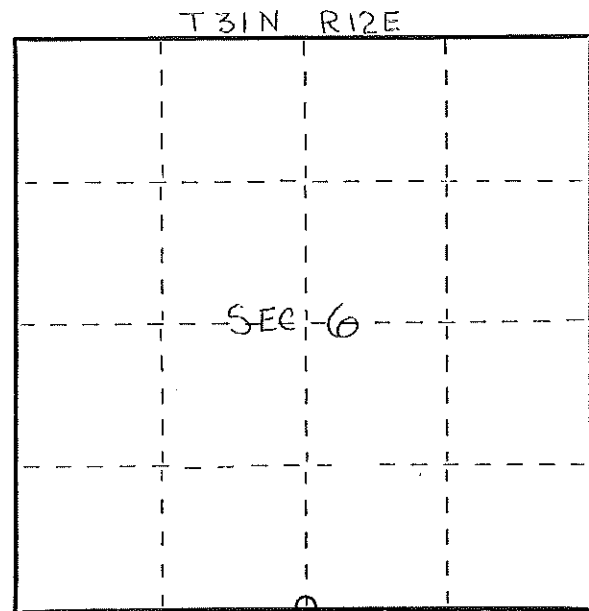
State of Wisconsin }
County of LANGLADE } ss.

I, WESLEY J. TRADEWELL, do hereby certify that on the 18TH day of JULY, 1978, I found evidence of the SOUTH 1/4 corner of SECTION 6 Township 31, North, Range 12 EAST, Fourth Principal Meridian, as described hereon; and that from this evidence I established a new monument and accessories as described hereon to perpetuate the original location of this corner.

Resident witnesses:

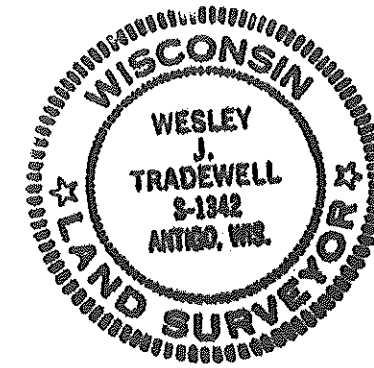
.....
.....
.....

FORM 985 H. C. MILLER CO., MILWAUKEE



○ = Corner monument restored.

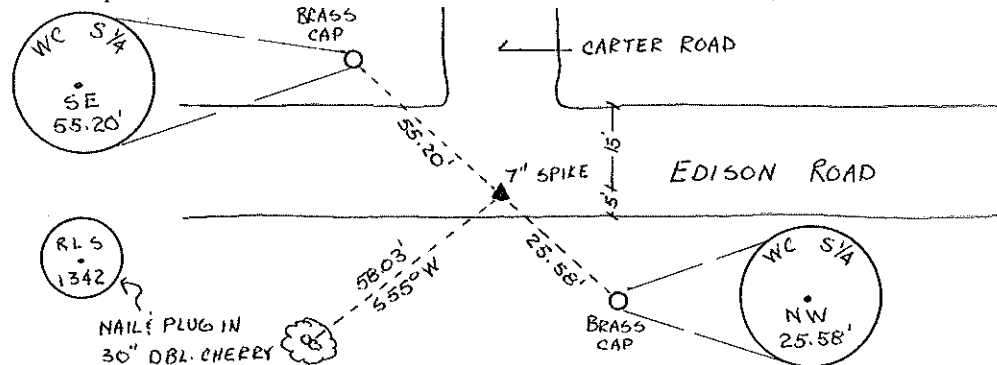
History of original corner establishment:



Description of corner evidence found:

FOUND 10" x 7" STONE WITH "X" ON TOP, 2" OUTSIDE DIAMETER IRON PIPE ON WEST SIDE OF STONE. STONE IS 17" BELOW SURFACE, PIPE IS 10" BELOW SURFACE. CORNER WAS SET BY M. HUTCHINSON (NO DATE) FROM ORIGINAL BEARING TREE. CORNER WAS CALLED FOR IN HUTCHINSON'S NOTES DATED APRIL 12, 1918. WE SET A 7" SPIKE OVER "X" IN STONE, AND TWO BRASS CAP WITNESS CORNERS.

Description of monument and accessories I established to perpetuate the original location of this corner.



NOTE: BEARINGS TAKEN WITH RECON COMPASS

Dated at ANTIGO, Wis., this 24TH day of JULY, 1978.

Signature Wesley J. Tradewell Title REGISTERED LAND SURVEYOR Registration No. 1342
(County Surveyor, Registered Land Surveyor, or other duly authorized official)

Office of Register of Deeds, County of, I hereby certify that the within instrument was filed in this office for record on the day of, 19..... at o'clock M.

(Register of Deeds)

By..... Deputy