

U.S. PUBLIC LAND SURVEY MONUMENT RECORD

(Prepared and as required by S. A-E 7.08 WI Administrative Code)

The SOUTHEAST corner of Section 6, T. 31 N., R. 12 E., Langlade County, WI
 Corner was (check all that apply)

- Restored through acceptance of an obliterated evidence location.
- Restored through acceptance of a found perpetuated location.
- Determined to be lost and re-established through proportionate methods. (show bearings and distances to PLSS corners used for proportioning.)
- Restored/recovered/re-established in a location that differs from a previously established position. (Show difference in plan view below.)
- Check here if additional information is shown on the reverse side of this form.

Describe record evidence, recovered physical evidence, occupational evidence, testimonial evidence, and all other evidence considered in the recovery/restoration of the corner.

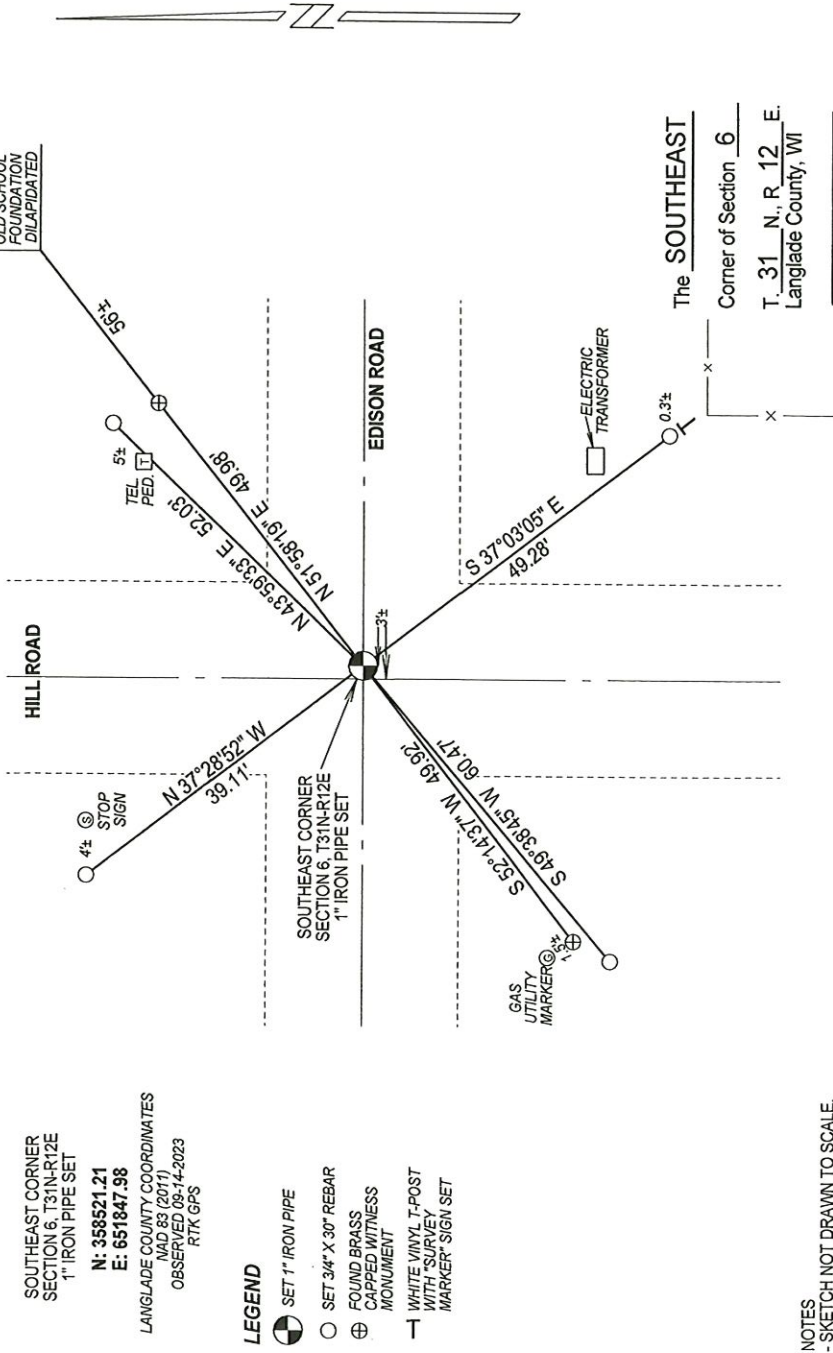
1860 - Original corner established by H.C. Fellows - bearing trees: Sugar, 10", S81°W, 32 links; Ironwood, 8", S70°E, 32 links.
 1912 - Fieldbook 94 Page 102. Hutchinson notes "corner to 5.6,7,8; stone 6x10x13 with "x", SW corner of Schoolhouse N50°E, 161 links."
 1969 - Robert Poss found tie to old school house foundation, does not indicate if he set anything at corner location. Poss says he "did not locate stone" by Hutchinson. Poss made ties to corner and filed tie sheet.

2023 - I previously found an existing iron pipe at the corner location. Road is currently under construction. Iron pipe at corner was gone due to construction. I found Poss's ties and set a 1" x 24" iron pipe 18" below road surface at coordinates previously established on corner. Location matches ties from existing witness monuments set by Poss and previous survey work in the area.

Physical description of the monument set:

I set a 1" x 24" iron pipe 18" below road surface at corner location and tied out as shown below.

Describe the accessories used to perpetuate the location of the corner. Include a plan view drawing and indicate accessories found/set. Describe measuring point on bearing trees. Show any topographic features that would aid in future recovery of the corner.



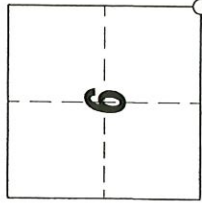
NOTES
 - SKETCH NOT DRAWN TO SCALE.
 - TIE BEARINGS SHOWN ARE LANGLADE COUNTY GRID BEARINGS.
 - ALL TIES MEASURED ELECTRONICALLY WITH TOTAL STATION.

SURVEYORS SEAL



I, Michael J. Hoffman certify that the corner location shown on this record was determined by me or under my direction and control and that this U.S. Public Land Survey Monument Record is correct and complete to the best of my knowledge and belief.

Michael J. Hoffman 09-15-2023
 Signature Date



○ = Location of corner

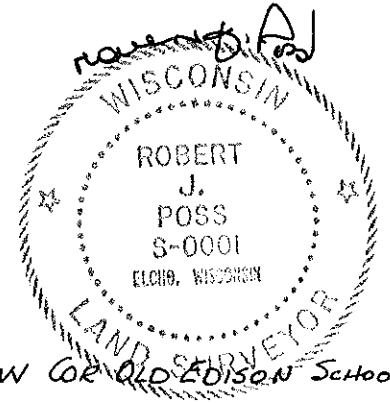
CERTIFIED LAND CORNER RESTORATION

31-12
Index No. **E5**

State of Wisconsin }
County of LANGLADE } ss.

History of original corner establishment:

I ROBERT J. POSS, do hereby certify that on the 19TH day of JULY, 1969, I found evidence of the SECTION corner of SECS. 5-6-7-8 Township 31, North, Range 12 EAST, Fourth, Principal Meridian, as described hereon; and that from this evidence I established a new monument and accessories as described hereon to perpetuate the original location of this corner.



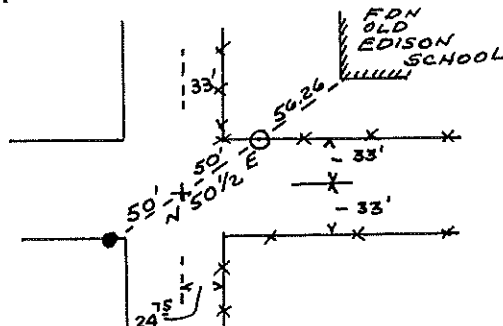
Description of corner evidence found:

HUTCHINSON'S NOTES SHOWS COR. TO SW COR. OLD EDISON SCHOOL N50 1/2 E 161 (LKS) = 106.26' - LOCATION CHECKS WITH ALL OTHER SURROUNDINGS DID NOT LOCATE STONE.

Resident witnesses:

4/15/69 SOMEONE DELIVERED A BRASS CAP (OBSERVED HIT BY MACHINERY) FROM A 2" 10, STAMPED TO REPRESENT THIS CORNER.

Description of monument and accessories I established to perpetuate the original location of this corner.

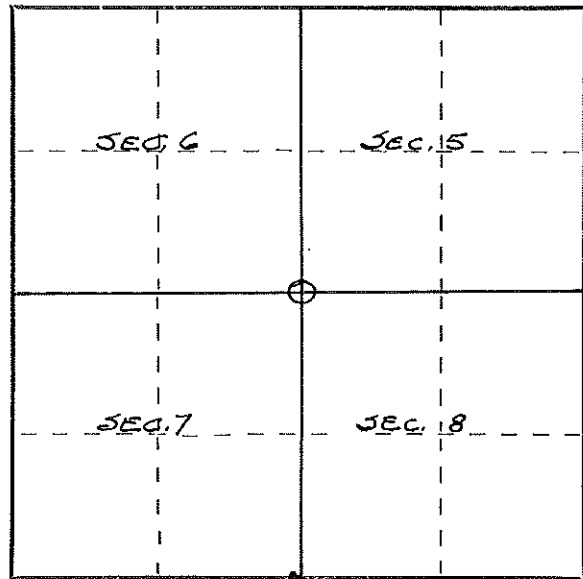


• 1/4" PIPE W/ GAL. CAP SET IN CONC. IN OLD STORAGE YD.

MKD. WIT. COR. SEC. 6 | SEC. 5 SEC. 7 | SEC. 8 COR. N50 1/2 E 50.0 FT

○ BRASS CAP IN CONC. MON.

MKD. WIT. COR. SEC. 6 | SEC. 5 SEC. 7 | SEC. 8 COR. S50 1/2 W 50.0 FT



○ = Corner monument restored.

Dated at ELCHO, Wis., this 19TH day of JULY, 1969.

Signature Robert J. Poss Title REG. LAND SURVEYOR Registration No. S-0001
(County Surveyor, Registered Land Surveyor, or other duly authorized official)

Office of Register of Deeds, County of _____, I hereby certify that the within instrument was filed in this office for record on the _____ day of _____, 19____ at _____ o'clock _____ M.

(Register of Deeds)

By _____ Deputy

FORM 985 K. C. MILLER CO., MILWAUKEE