

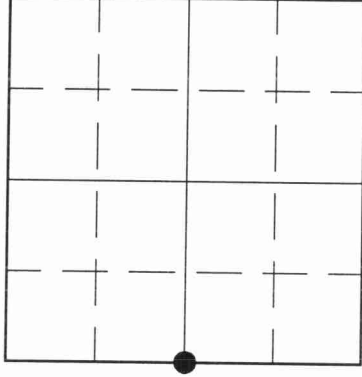
3/12042000

U.S. PUBLIC LAND SURVEY MONUMENT RECORD

HISTORY OF ORIGINAL CORNER ESTABLISHMENT AND SUBSEQUENT RESTORATION AND DESCRIPTION OF ANY RECORD, MONUMENT OCCUPATIONAL, TESTIMONIAL OR OTHER EVIDENCE CONSIDERED:

THE ORIGINAL QUARTER CORNER WAS ESTABLISHED IN 1857 BY JAMES McBRIDE. ORIGINAL BEARING TREES: SUGAR MAPLE 18" N83W 3LKS., IRONWOOD 10" S84E 33LKS. COUNTY SURVEYOR INDICATED NO RECORD OF RESURVEY ACTIVITY AT THIS LOCATION. 6/11/99 BECKY BAHAR AND GERRY BAHAR SEARCHED FOR CORNER, FOUND OLD FENCELINE TO THE WEST. AN APPARENT 40 LINE TO THE SOUTH (ROCK FENCE TO THE EAST) CHECKED WITHIN 2.5' OF A SPLIT DISTANCE BETWEEN FENCE MENTIONED ABOVE AND THE SW COR OF SEC 3. ACCEPTED OLD FENCELINE TO THE WEST AND CL OF POLAR ROAD AS BEST EVIDENCE OF ORIGINAL QUARTER CORNER LOCATION. SET 4 1/2" GEAR HEADED SPIKE IN PAVEMENT.

● = LOCATION OF CORNER

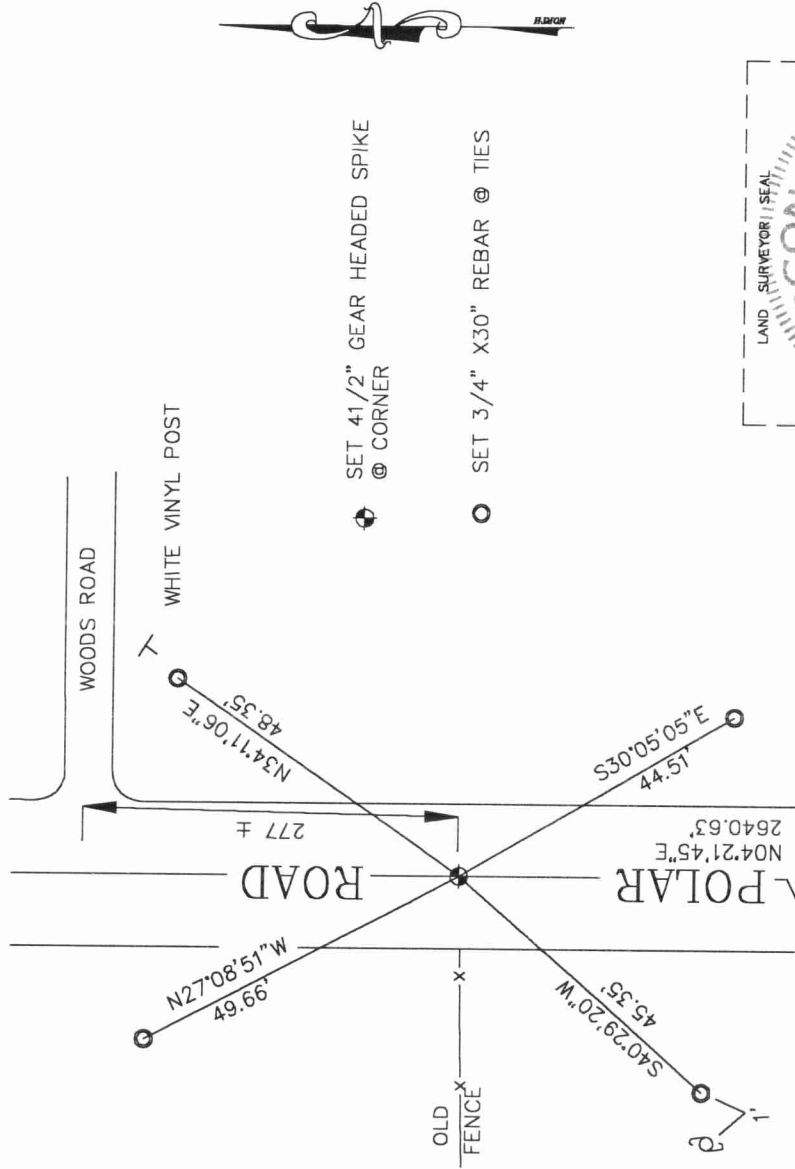


SECTION 3
TOWNSHIP 31 NORTH, RANGE 12 EAST
LANGLADE POLAR
COUNTY, WISCONSIN

CORNER WAS: (CHECK ALL THAT APPLY)

- RESTORED THROUGH ACCEPTANCE OF AN OBLITERATED EVIDENCE LOCATION
- RESTORED THROUGH ACCEPTANCE OF A FOUND PERPETUATED LOCATION
- CONSIDERED A LOST CORNER AND REESTABLISHED THROUGH LOST CORNER PROPORTIONATE METHODS (INCLUDE A PLAN VIEW DRAWING SHOWING DISTANCES AND DIRECTIONS TO OTHER PUBLIC LAND SURVEY CORNERS USED FOR PROPORTIONING AND DETERMINING THE CORNER LOCATION)
- RESTORED OR REESTABLISHED IN A LOCATION THAT DIFFERS FROM A PREVIOUS RESTORATION OR REESTABLISHMENT (INCLUDE A PLAN VIEW DRAWING AND INDICATE WHAT WAS SET AND/OR FOUND)
- CHECK IF THERE IS ADDITIONAL INFORMATION ON BACK

DESCRIBE THE MONUMENT AND ACCESSORIES USED TO PERPETUATE THE LOCATION OF THE CORNER. (INCLUDE A PLAN VIEW DRAWING AND INDICATE WHAT WAS SET AND/OR FOUND) ALSO INCLUDE FOUR TIES TO THE SECTION CORNER AND DESCRIPTION OF THE TIES.

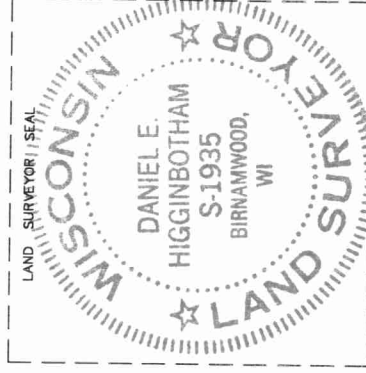


⊕ SET 4 1/2" GEAR HEADED SPIKE @ CORNER

○ SET 3/4" X30" REBAR @ TIES

C 13
31-12

INDEX NO.



SW COR SEC 3
FD SURVEY NL

DANIEL E. HIGGINBOTHAM

(Type or print name) CERTIFY THAT THE CORNER LOCATION SHOWN ON THIS RECORD WAS DETERMINED BY ME OR UNDER MY DIRECTION AND CONTROL AND THAT THIS U.S. PUBLIC LAND SURVEY MONUMENT RECORD IS CORRECT AND COMPLETE TO THE BEST OF MY KNOWLEDGE AND BELIEF.

Daniel E. Higginbotham

SIGNATURE

2-3-2000

DATE

