

# U.S. PUBLIC LAND SURVEY MONUMENT RECORD

(Prepared and as required by S. A-E 7.08 WI Administrative Code)

The CENTER 1/4 corner of Section 2, T. 31 N., R. 12 E., Langlade County, WI  
 Corner was (check all that apply)

- Restored through acceptance of an obliterated evidence location.
- Restored through acceptance of a found perpetuated location.
- Determined to be lost and re-established through proportionate methods. (show bearings and distances to PLSS corners used for proportioning.)
- Restored/recovered/re-established in a location that differs from a previously established position. (Show difference in plan view below.)
- Check here if additional information is shown on the reverse side of this form.

**Describe record evidence, recovered physical evidence, occupational evidence, testimonial evidence, and all other evidence considered in the recovery/restoration of the corner.**

This corner not set as part of original survey.

1914 - Fieldbook 94 Page 123, Brooks "set center" and references two BT's; 12" Sugar, N63 1/2°W, 40.75 links and 10" Sugar, S81°W, 40.5 links.

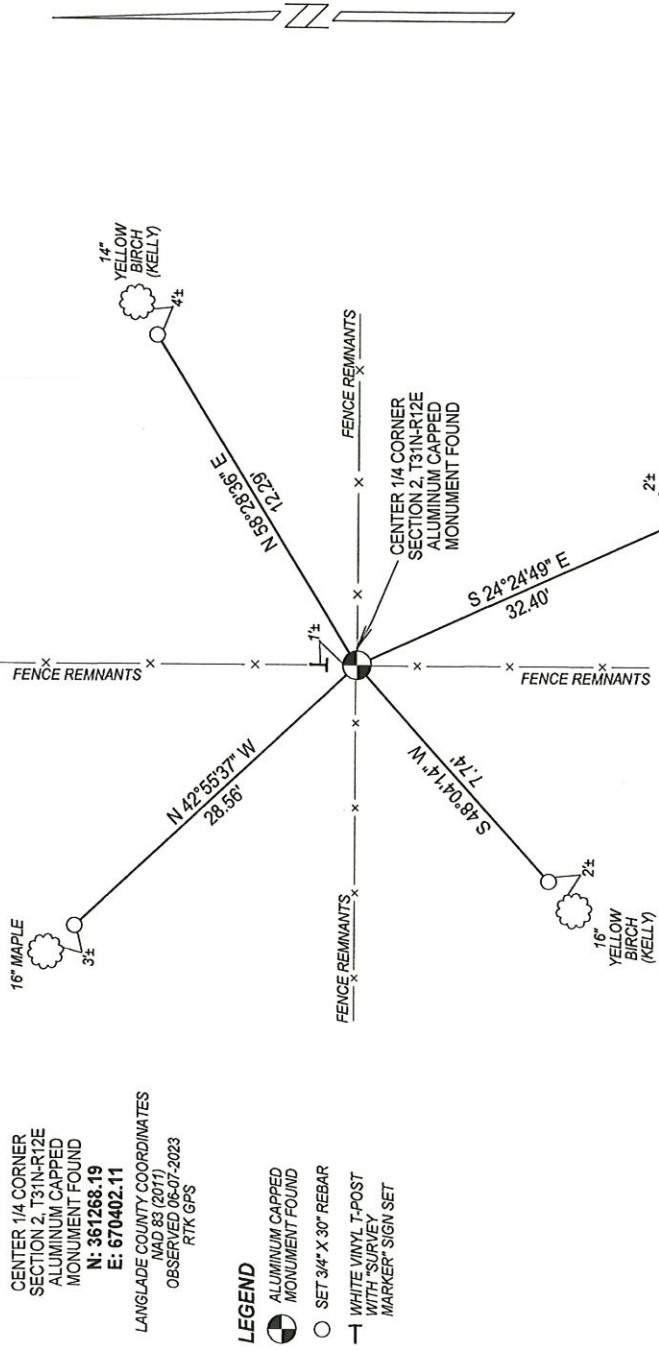
1987 - William Kelly set Aluminum Capped Monument at East-West and North-South fence intersection. Kelly tied the corner out and filed tie sheet.

2023 - I found the existing Aluminum Capped Monument set by Kelly in good condition. Corner falls at old fence intersection. Verified corner location from existing BT's and made additional ties.

**Physical description of the monument set:**

Accepted Aluminum Capped Monument set by Kelly as corner location and tied out as shown below.

Describe the accessories used to perpetuate the location of the corner. Include a plan view drawing and indicate accessories found/set. Describe measuring point on bearing trees. Show any topographic features that would aid in future recovery of the corner.

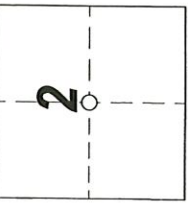


CENTER 1/4 CORNER  
 SECTION 2, T31N-R12E  
 ALUMINUM CAPPED  
 MONUMENT FOUND  
 N: 361268.19  
 E: 670402.11  
 LANGLADGE COUNTY COORDINATES  
 NAD 83 (2011)  
 OBSERVED 06-07-2023  
 RTK GPS

- LEGEND**
- ALUMINUM CAPPED MONUMENT FOUND
  - SET 3/4" X 30" REBAR
  - WHITE VINYL T-POST WITH SURVEY MARKER SIGN SET

- NOTES**
- SKETCH NOT DRAWN TO SCALE
  - TIE BEARINGS SHOWN ASSUMED.
  - BT PLAQUARDS SET IN FACE OF BEARING TREES.
  - ALL TIES MEASURED ELECTRONICALLY WITH TOTAL STATION.

The CENTER 1/4  
 Corner of Section 2  
 T. 31 N., R. 12 E.  
 Langlade County, WI



INDEX No. **C-19** 4311202 2020

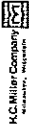
○ = Location of corner

SURVEYORS SEAL



I, Michael J. Hoffman certify that the corner location shown on this record was determined by me or under my direction and control and that this U.S. Public Land Survey Monument Record is correct and complete to the best of my knowledge and belief.

Signature 08-23-2023 Date



Stock No. 26273

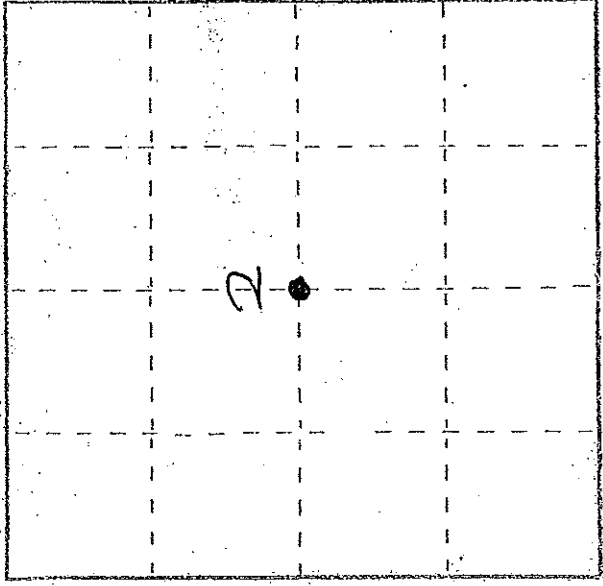
U. S. PUBLIC LAND SURVEY MONUMENT RECORD

1. This record shall show the location of the corner and shall include all of the following nine elements (a through i).

LANGLADE COUNTY

- (a) Identify the corner by reference to the U. S. public land survey system.
- O = Corner monument restored.

CORNER ESTABLISHED IN 1930S BY ADJOINING LAND OWNERS

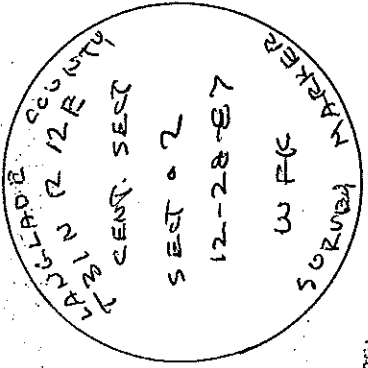
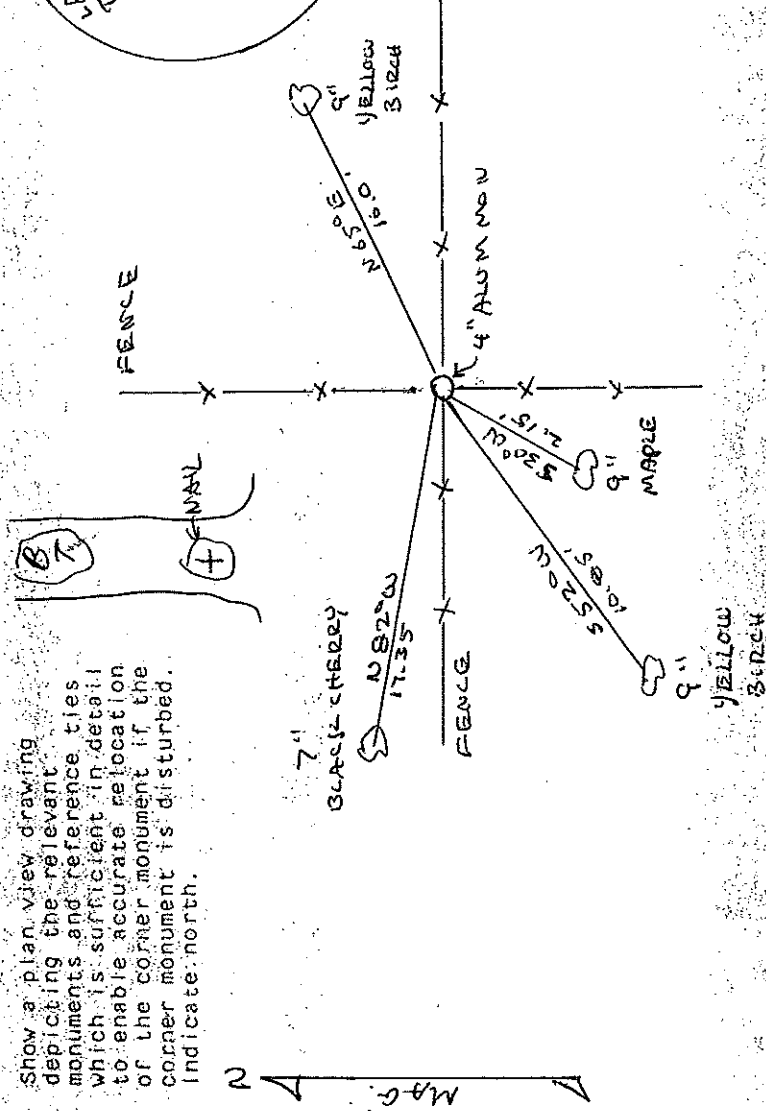


T 31 N R 2 E

- (b) Describe any record evidence, monument evidence, occupational evidence, testimonial evidence, or any other material evidence you considered, and whether the monument was found or placed.

INTERSECTION OF E-W AND N-S 1/4 LINES VERIFIED LOCATION OF FENCE INTERSECTION. ACCEPTED FENCE INTERSECTION AS GOOD AND SET ALUM MONUMENT

- (c) In the plan view drawing below, provide reference ties to at least 4 witness monuments, or, if the location is within a municipality, to at least 2 witness monuments. (Witness monuments shall be made of concrete, natural stone, iron or other equally durable material.) Describe witness monuments.



(e) Describe any material discrepancy between the location of the corner as restored or reestablished and the location of that corner as previously restored or reestablished by distance and direction. Show the discrepancy on the plan view drawing under (d), above. Show the distances between the corner as previously restored or reestablished and (1) the corner as restored or reestablished, and (2) to at least 2 of the witness monuments shown on the drawing in (d), above.

NONE

(f) Was the corner restored through acceptance of (1) an obliterated evidence location, or, (2) a found perpetuated location?

NO

(g&h) Was the corner reestablished through lost corner proportionate methods? If so, show the method, including the directions and distances to other public land survey corners used as evidence or used for proportioning in determining the corner location?

CORNER ESTABLISHED AS OCCUPIED BY FENCE  
INTERSECTION.

(1) I, WILLIAM F. KELLY  
(Type or print name) certify that the corner location shown on this record was determined by me or under my direction and control and that this U.S. Public Land Survey Monument Record is correct and complete to the best of my knowledge and belief.

Signature William F. Kelly

Date 12-29-87

