

U.S. PUBLIC LAND SURVEY MONUMENT RECORD

(Prepared and as required by S. A-E 7.08 WI Administrative Code)

The EAST 1/4 corner of Section 2, T. 31 N., R. 12 E., Langlade County, WI
Corner was (check all that apply)

- Restored through acceptance of an obliterated evidence location.
- Restored through acceptance of a found perpetuated location.
- Determined to be lost and re-established through proportionate methods. (show bearings and distances to PLSS corners used for proportioning.)
- Restored/recovered/re-established in a location that differs from a previously established position. (Show difference in plan view below.)
- Check here if additional information is shown on the reverse side of this form.

Describe record evidence, recovered physical evidence, occupational evidence, testimonial evidence, and all other evidence considered in the recovery/restoration of the corner.

1857 - Original corner established by J. McBride - bearing trees: Birch, 16", N18°E, 38 links; Sugar, 10", N88°W, 24 links.

Date unknown - Fieldbook 94 Page 123, Hutchinson notes "one original IBT and stake set by myself in 1905."

1987 - William Kelly "located axel called for in county surveyor notes, set aluminum cap over axel. Kelly made ties to corner and filed tie sheet.

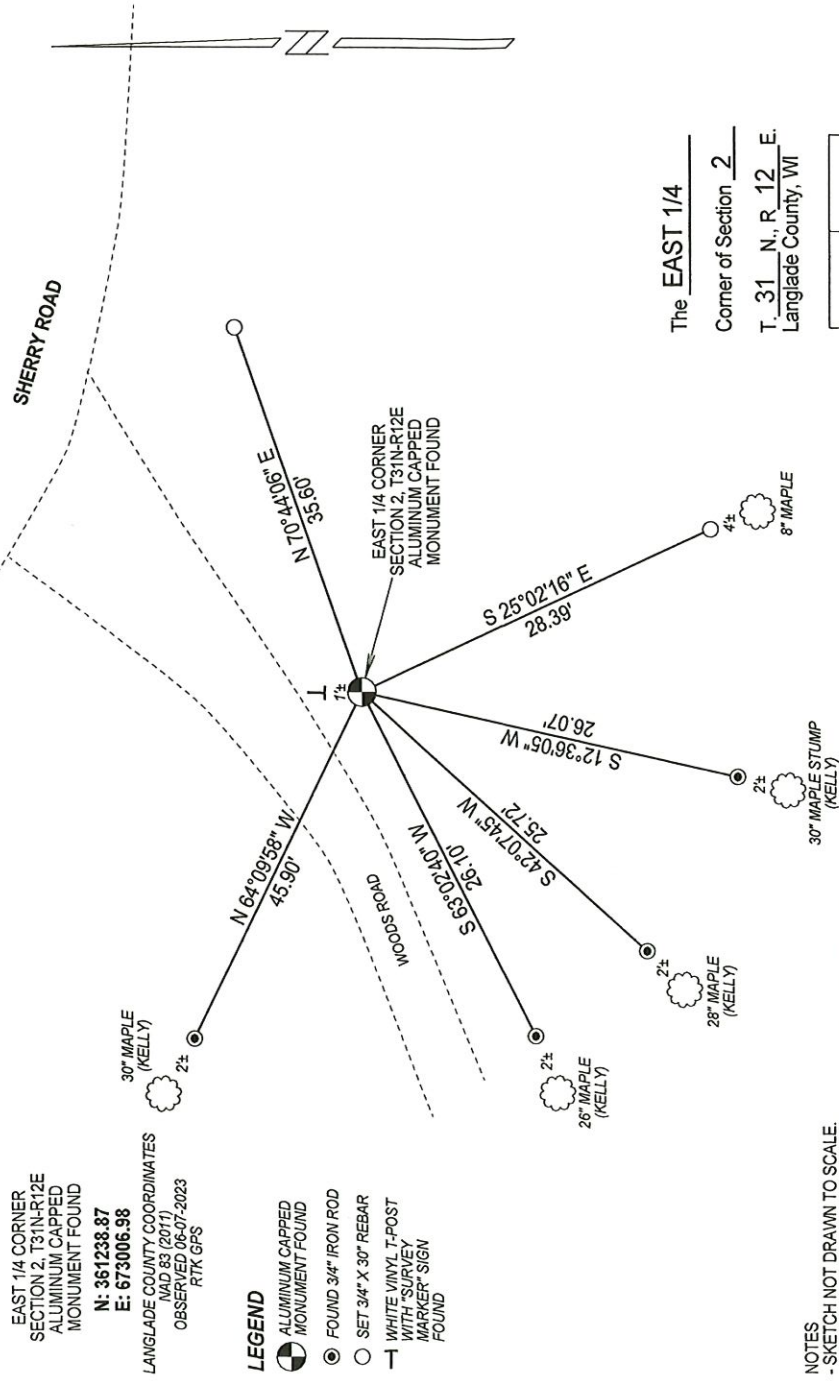
2013 - Tim Rusch found aluminum capped monument by Kelly in poor condition. Rusch dug down 1.5' and found axel shaft called for by Kelly. He reset aluminum capped monument over axel shaft. Rusch made ties to corner and filed tie sheet.

2023 - I found existing aluminum capped monument reset by Rusch in good condition. Found existing ties referenced by Rusch in good condition.

Physical description of the monument set:

Accepted aluminum capped monument as corner location and tied out as shown below.

Describe the accessories used to perpetuate the location of the corner. Include a plan view drawing and indicate accessories found/set. Describe measuring point on bearing trees. Show any topographic features that would aid in future recovery of the corner.



NOTES
- SKETCH NOT DRAWN TO SCALE.
- TIE BEARINGS SHOWN ARE LANGLADE COUNTY GRID BEARINGS.
- ALL TIES MEASURED ELECTRONICALLY WITH TOTAL STATION.

SURVEYORS SEAL



I, Michael J. Hoffman certify that the corner location shown on this record was determined by me or under my direction and control and that this U.S. Public Land Survey Monument Record is correct and complete to the best of my knowledge and belief.

Michael J. Hoffman 09-15-2023
Signature Date

INDEX No. **C - 21** 4311202 2000

4311202 2000 2014

U.S. PUBLIC LAND SURVEY MONUMENT RECORD

(Prepared and as required by S. A-E 7.08 WI Administrative Code)

The WEST 1/4 corner of Section 1, T. 31 N., R. 12 E., Langlade County, WI
 Corner was (check all that apply)

- Restored through acceptance of an obliterated evidence location.
- Restored through acceptance of a found perpetuated location.
- Determined to be lost and re-established through proportionate methods. (show bearings and distances to PLSS corners used for proportioning.)
- Restored/recovered/re-established in a location that differs from a previously established position. (Show difference in plan view below.)
- Check here if additional information is shown on the reverse side of this form.

Describe record evidence, recovered physical evidence, occupational evidence, testimonial evidence, and all other evidence considered in the recovery/restoration of the corner.

1860 - Government Surveyor J. McBride set 1/4 section post in original survey.

BT's: Birch 16" N18°E, 38 links; Sugar 10" N88°W, 24 links.

1920 - Hutchinson working in Section 2 found "one original BT and stake set by myself in 1905."

1987 - Former Surveyor Kelly "found axel called for in county surveyors notes, set aluminum cap over axel." Kelly prepared a tie sheet and marked four witness trees.

1995 - Tom Amott, working in Section 1, found an aluminum monument at corner location, as shown on tie sheet he prepared for the Center 1/4 corner of Section 1.

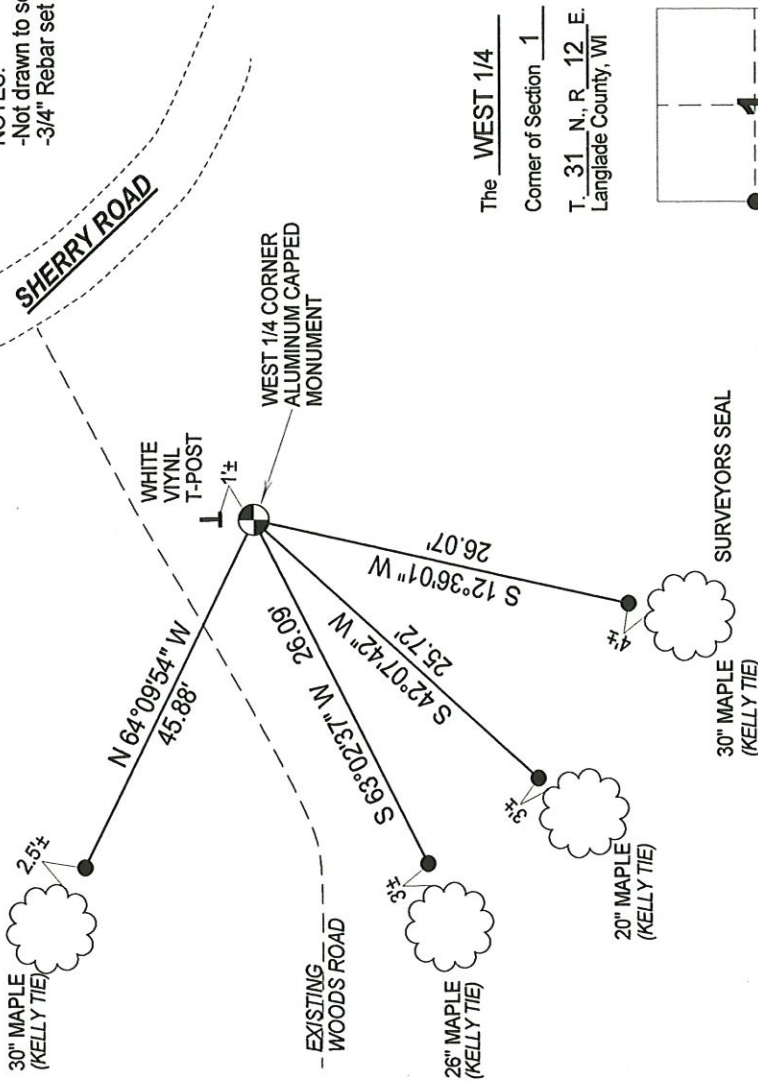
2013 - I found the aluminum capped monument disturbed by logging operations. The monument was sheared into two pieces, the top aluminum capped portion was lying on ground, and the bottom portion still in ground. I dug 1.5 feet below surface and found the existing axel shaft called for in Kelly's tie sheet in good condition. I replaced the existing stamped aluminum cap on a new piece of aluminum pipe and reset it over the axel shaft. Distances match well with Amott as shown on his tie sheet for the Center 1/4 corner. I found Kelly's four bearing trees and set four new rebar ties as shown below.

Physical description of the monument set:

2013 - I reset a 2.375" o.d. x 24" long aluminum pipe with aluminum cap flush with surface. I set four new rebars and a white vinyl T-post and tied out the corner as shown below.

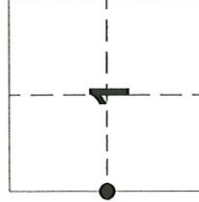
Describe the accessories used to perpetuate the location of the corner. Include a plan view drawing and indicate accessories found/set. Describe measuring point on bearing trees. Show any topographic features that would aid in future recovery of the corner.

BEARINGS REFERENCED TO THE LANGLADE COUNTY COORDINATE SYSTEM GRID.



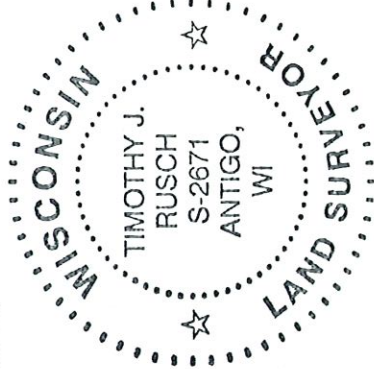
NOTES:
 -Not drawn to scale
 -3/4" Rebar set a tie locations

The WEST 1/4
 Corner of Section 1
 T. 31 N., R. 12 E.
 Langlade County, WI



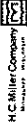
● = Location of corner

INDEX No. 21 (31-12)



I, Timothy J. Rusch certify that the corner location shown on this record was determined by me or under my direction and control and that this U.S. Public Land Survey Monument Record is correct and complete to the best of my knowledge and belief.

Timothy J. Rusch 05/21/2014
 Signature Date

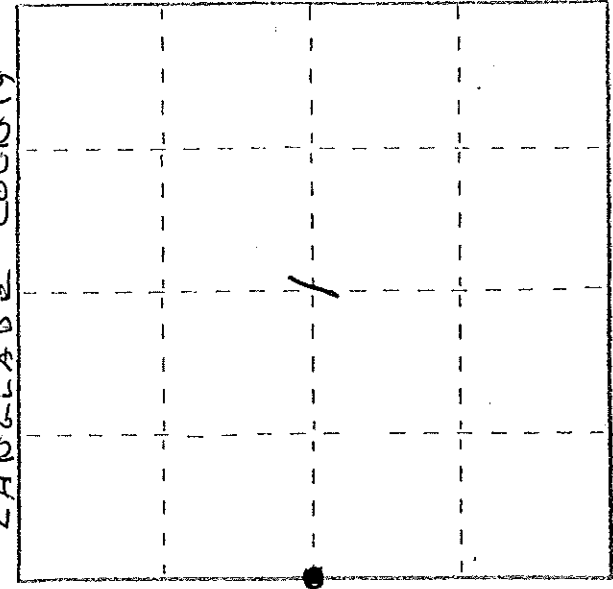


Stock No. 26273

U. S. PUBLIC LAND SURVEY MONUMENT RECORD

This record shall show the location of the corner and shall include all of the following nine elements (a through i).

LANGLADE COUNTY



T 31 N R 12 E

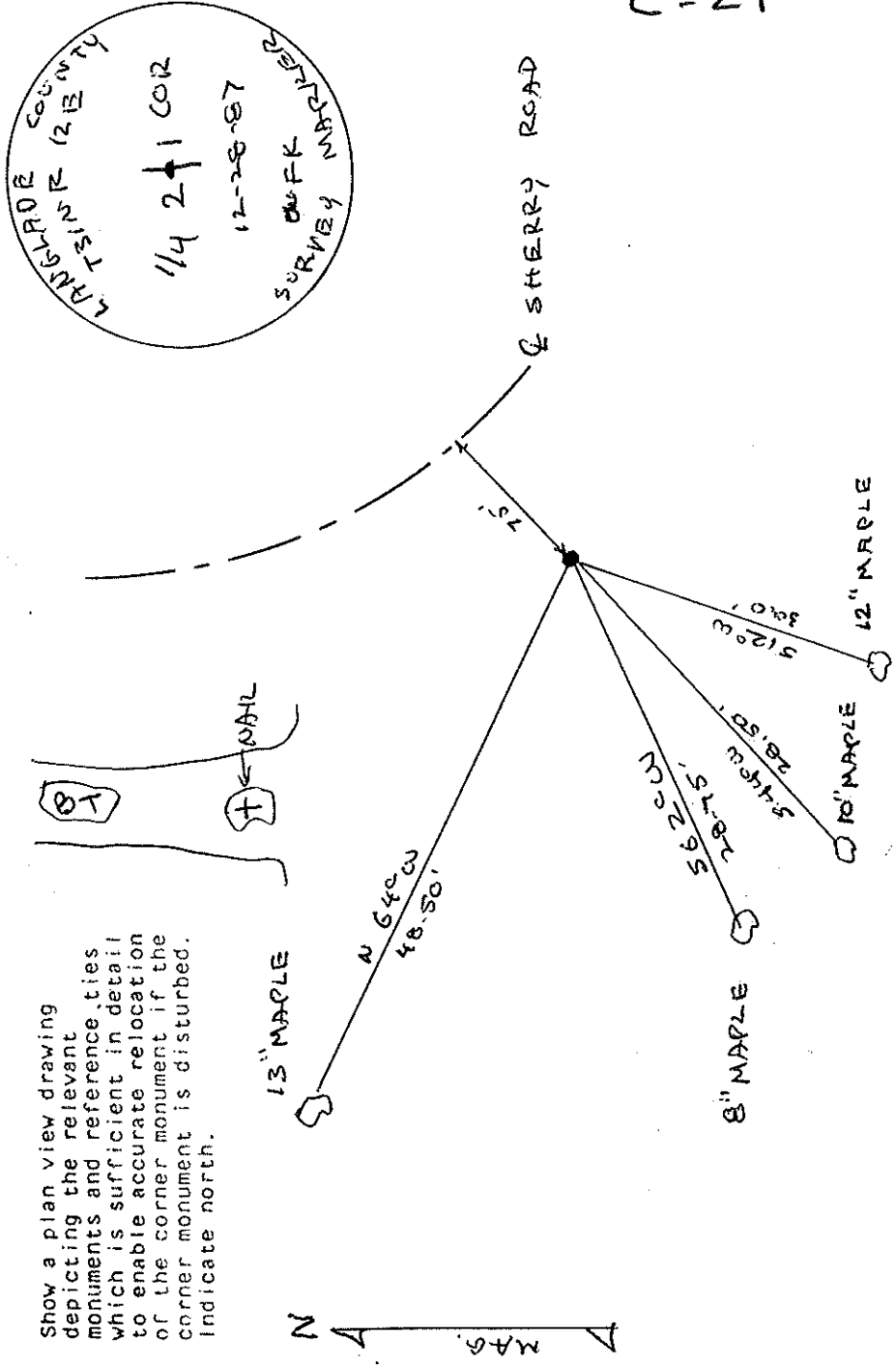
- (a) Identify the corner by reference to the U.S. public land survey system.
- = Corner monument restored.

ORIGINAL CORNER ESTABLISHED
 BY JAMES McBRIDE IN
 NOV-DEC 1857
 CORNER PERPETUATED BY
 M. HUTCHINSON IN 1920'S

- (b) Describe any record evidence, monument evidence, occupational evidence, testimonial evidence, or any other material evidence you considered, and whether the monument was found or placed.

LOCATED AT EL CALLED FOR IN COUNTY SURVEYOR NOTES
 SET ALUM CAP OVER AXEL. MARKED WIT. TREES

- (c) In the plan view drawing below, provide reference ties to at least 4 witness monuments, or, if the location is within a municipality, to at least 2 witness monuments. (Witness monuments shall be made of concrete, natural stone, iron or other equally durable material.) Describe witness monuments.



LANGLADE COUNTY
 T 31 N R 12 E
 1/4 2+1 COR
 12-28-87
 SURVEYOR WARRNER

(e) Describe any material discrepancy between the location of the corner as restored or reestablished and the location of that corner as previously restored or reestablished by distance and direction. Show the discrepancy on the plan view drawing under (d), above. Show the distances between the corner as previously restored or reestablished and (1) the corner as restored or reestablished, and (2) to at least 2 of the witness monuments shown on the drawing in (d), above.

NONE

(f) Was the corner restored through acceptance of (1) an obliterated evidence location, or, (2) a found perpetuated location?

(2)

(g&h) Was the corner reestablished through lost corner proportionate methods? If so, show the method, including the directions and distances to other public land survey corners used as evidence or used for proportioning in determining the corner location?

NO

(1) WILLIAM F. KELLY

(Type or print name) certify that the corner location shown on this record was determined by me or under my direction and control and that this U.S. Public Land Survey Monument Record is correct and complete to the best of my knowledge and belief.

Signature

William F. Kelly

Date

12-29-87

