

# U.S. PUBLIC LAND SURVEY MONUMENT RECORD

(Prepared and as required by S. A-E 7.08 WI Administrative Code)

The SOUTH 1/4 corner of Section 1, T. 31 N., R. 12 E., Langlade County, WI  
Corner was (check all that apply)

- Restored through acceptance of an obliterated evidence location.
- Restored through acceptance of a found perpetuated location.
- Determined to be lost and re-established through proportionate methods. (show bearings and distances to PLSS corners used for proportioning.)
- Restored/recovered/re-established in a location that differs from a previously established position. (Show difference in plan view below.)
- Check here if additional information is shown on the reverse side of this form.

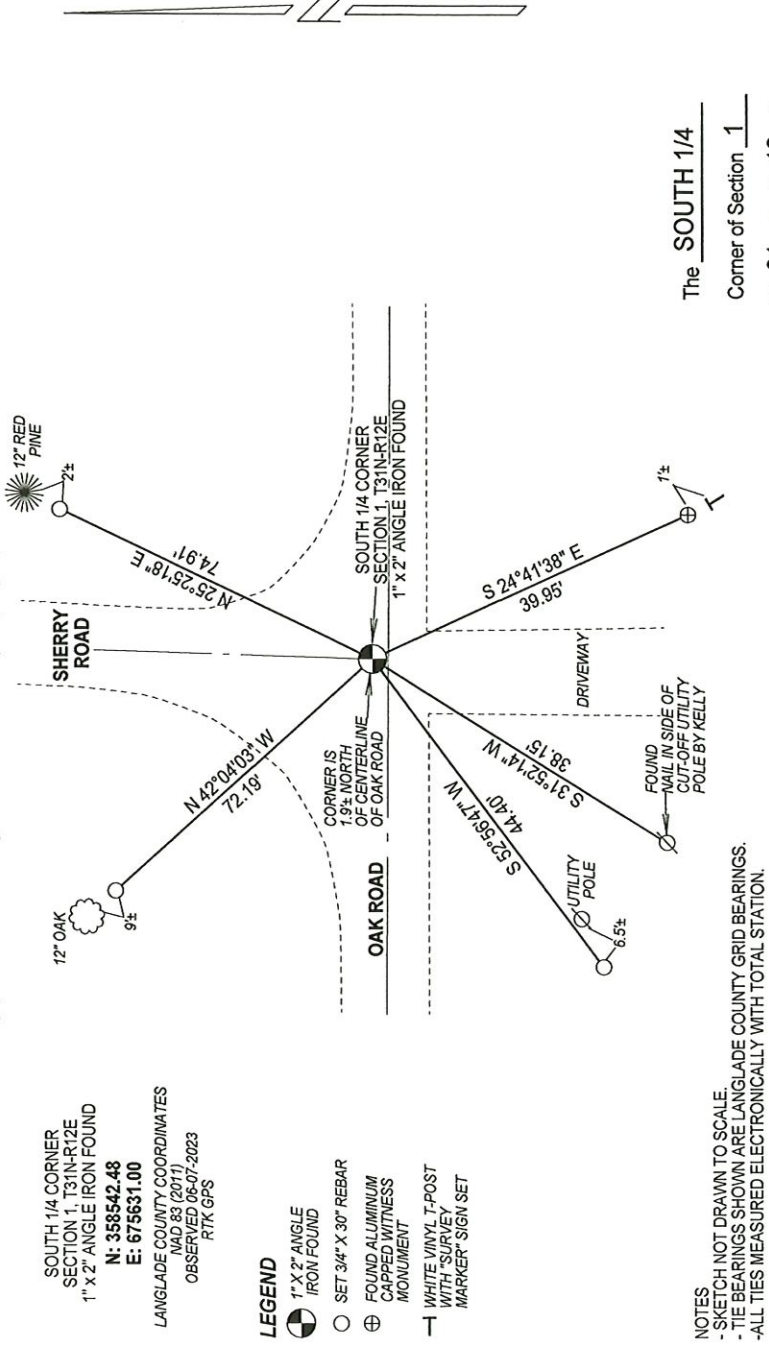
**Describe record evidence, recovered physical evidence, occupational evidence, testimonial evidence, and all other evidence considered in the recovery/restoration of the corner.**

- 1857 - Original corner established by J. McBride - bearing trees: Birch, 16", S18°W, 19 links and a Hemlock, 28", N18°W, 19 links.
- 1905 - Fieldbook 149 Page 20, Baker notes corner "squared stake (1905) Later a cross-roads. Probably some mark could be found."
- 1982 - William Kelly found an angle iron in road intersection. Kelly tied the corner out and filed tie sheet.
- 2023 - I found the existing 1" x 2" angle iron 2" below surface in road, and two of Kelly's ties. Verified corner location and made additional ties.

## Physical description of the monument set:

Accepted 1"x2" angle iron as corner location and tied out as shown below.

Describe the accessories used to perpetuate the location of the corner. Include a plan view drawing and indicate accessories found/set. Describe measuring point on bearing trees. Show any topographic features that would aid in future recovery of the corner.

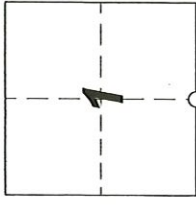


SURVEYORS SEAL



I, Michael J. Hoffman, certify that the corner location shown on this record was determined by me or under my direction and control and that this U.S. Public Land Survey Monument Record is correct and complete to the best of my knowledge and belief.

Michael J. Hoffman Signature  
08-23-2023 Date



○ = Location of corner

CERTIFIED LAND CORNER RESTORATION

Index No. E-23

State of Wisconsin }  
County of LANGLADE } ss.

I WILLIAM F. KELLY, do hereby certify that on the 16<sup>th</sup> day of DECEMBER, 1982, I found evidence of the S. 1/4 corner of SECT. 1 Township 31, North, Range 12 EAST, Fourth Principal Meridian, as described hereon; and that from this evidence I established a new monument and accessories as described hereon to perpetuate the original location of this corner.

Resident witnesses:

F. BROWN  
.....  
.....  
.....

History of original corner establishment:  
ORIGINAL CORNER ESTABLISHED BY  
JAMES MCBRIDE IN NOV. DEC., 1857.

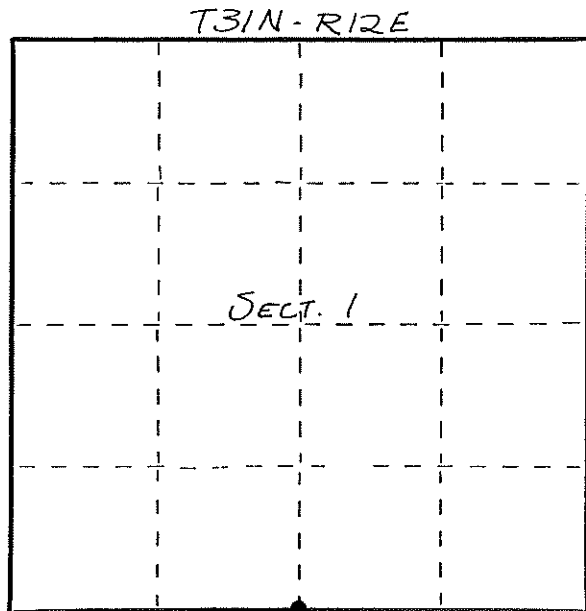
Description of corner evidence found:

FOUND IN PLACE: ANGLE IRON IN  
ROAD INTERSECTION.  
SET A 3" X 42" ALUMINUM CAP WITNESS  
MONUMENT. MARKED 2 POWER POLES  
AND 1 BT AS WITNESS MONUMENTS.

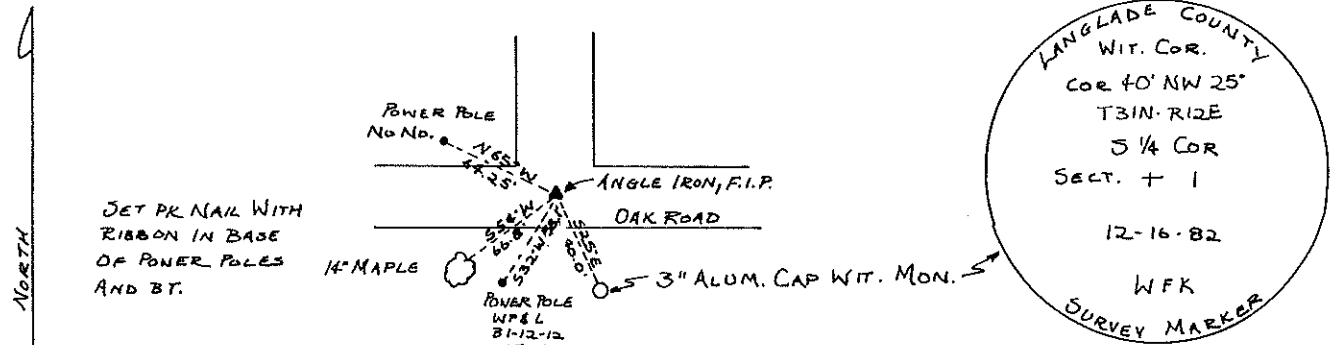


William F. Kelly  
12-17-82

Description of monument and accessories I established to perpetuate the original location of this corner.



○ = Corner monument restored.



Dated at ELCHO, Wis., this 16<sup>th</sup> day of DECEMBER, 1982.

Signature William F. Kelly Title COUNTY SURVEYOR Registration No. 1098  
(County Surveyor, Registered Land Surveyor, or other duly authorized official)

Office of Register of Deeds, County of....., I hereby certify that the within instrument was filed in this office for record on the.....day of....., 19..... at.....o'clock..... M.

.....  
(Register of Deeds)

By.....Deputy