

LANGLADE COUNTY U.S. PUBLIC LAND CORNER RESTORATION

The Center of Section 35, T. 31 N., R. 11 E., Langlade County, WI.

4/ 3111352020

Corner was: (check all that apply)

- Restored through acceptance of an obliterated evidence location.
- Restored through acceptance of a found perpetuated location.
- Determined to be lost and re-established through proportionate methods.
- Show bearings and distances to PLSS corners used for proportioning, and show original distances).
- Restored/recovered/re-established in a location that differs from a previously established position.
- (Show difference in plan view below).
- Check here if additional information is shown on the reverse side of this form.

Describe record evidence, recovered physical evidence, occupational evidence, testimonial evidence and all other evidence considered in the recovery/restoration of the corner.

This corner was not monumented in the original government survey. Malcolm Hutchinson subdivided Section 35 in 1931. He described the monument for this corner as a pump point with a cast-iron gear about 12 in. on top. In 1970, Bob Poss described the corner as: "Hutchinson set shaft with cog gear & 12 in. iron disc. This is now 2+ below road surface." He set 1 1/4" iron pipe with brass caps as witness monuments, 50' north and 50' south of the corner. 05/07/97 D. Tlusty, B. Markowski found a 3" iron pipe down 16" in road. Accepted it as the corner set by Hutchinson and perpetuated by Poss. It is known that Hutchinson had a supply of 3" pipe, many found in the Town of Peck.

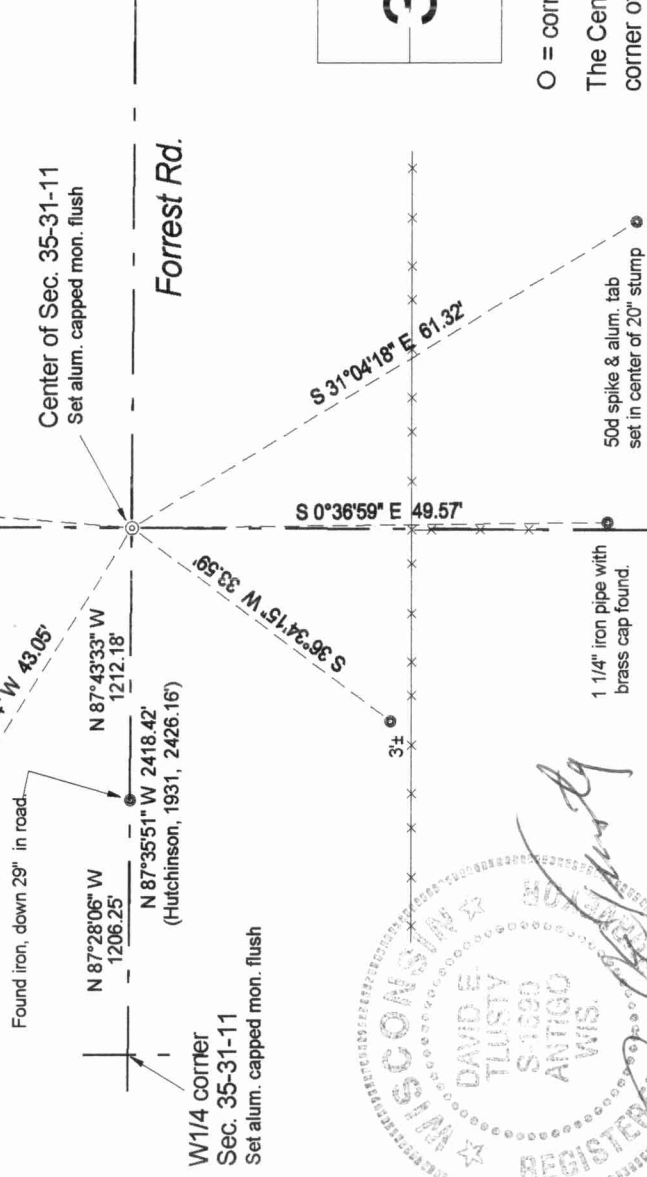
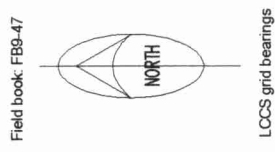
Physical description of the monument set:

Over the top of the iron pipe found, I set a 1" x 16" iron pipe with a 2" aluminum cap set flush to the road surface.

Describe the accessories used to perpetuate the corner. Include a plan view drawing and accessories found/set. Describe measuring point on bearing trees. Show any topographic features that would aid in future recovery of the corner.

LEGEND

- 3/4" x 30" rebar set, unless noted otherwise
- ⊙ 1" x 16" pipe with alum. cap set.

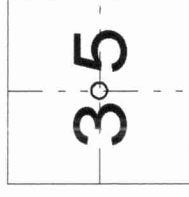


W1/4 corner
Sec. 35-31-11
Set alum. capped mon. flush



I, David E. Tlusty, Registered Land Surveyor, as Langlade County Surveyor, certify that the corner location on this record was determined by me and that this U.S. Public Land Survey Monument Record is correct to the best of my knowledge and belief.

Index No. X19 31-11



○ = corner perpetuated
The Center quarter
corner of Section 35,
T. 31 N., R. 11 E.,
Langlade County, WI

