

# U.S. PUBLIC LAND SURVEY MONUMENT RECORD

(Prepared and as required by S. A-E 7.08 WI Administrative Code)

The EAST 1/4 corner of Section 35, T. 31 N., R. 11 E., Langlade County, WI  
 Corner was (check all that apply)

- Restored through acceptance of an obliterated evidence location.
- Restored through acceptance of a found perpetuated location.
- Determined to be lost and re-established through proportionate methods. (show bearings and distances to PLSS corners used for proportioning.)
- Restored/recovered/re-established in a location that differs from a previously established position. (Show difference in plan view below.)
- Check here if additional information is shown on the reverse side of this form.

**Describe record evidence, recovered physical evidence, occupational evidence, testimonial evidence, and all other evidence considered in the recovery/restoration of the corner.**

1860 - Original corner established by H.C. Fellows - bearing trees: Ironwood, 8", N67°E, 8 links; Sugar, 23", S83°W, 11 links.

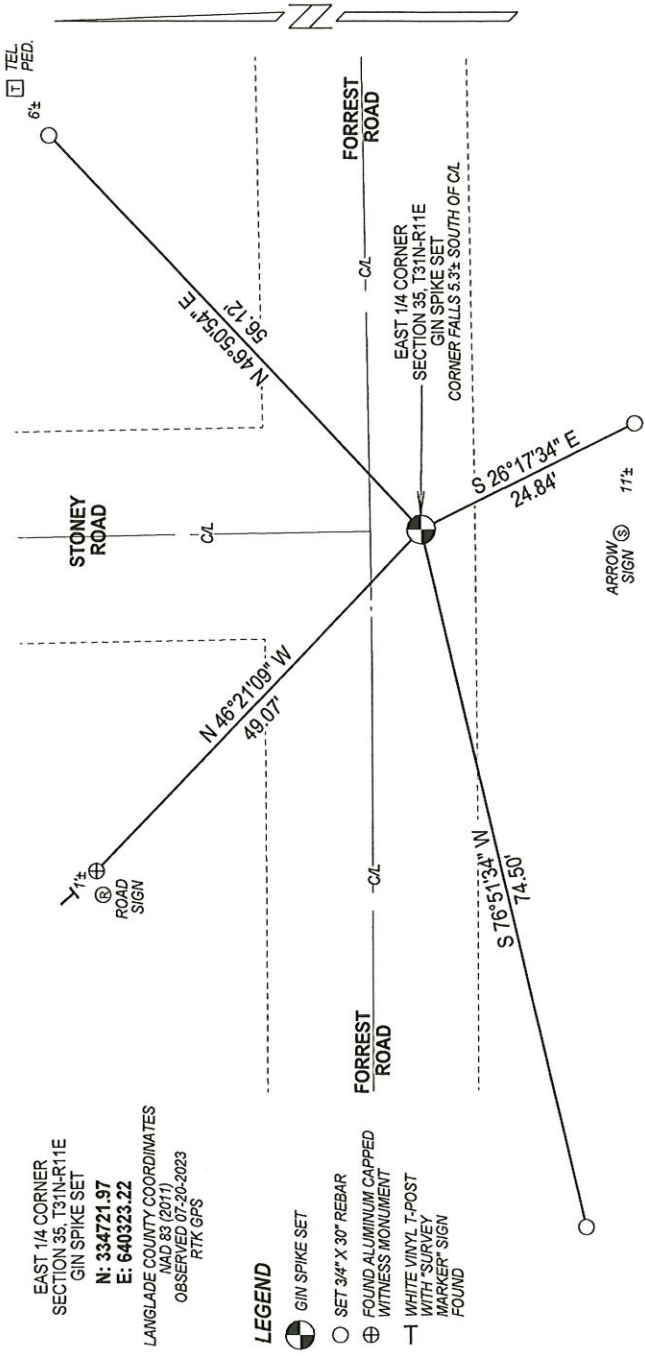
1989 - William Kelly "recovered Hutchinson's pump point and set rr spike in road over pump point." Kelly made ties and filed a tie sheet.

2023 - Railroad spike referenced by Kelly was missing. Recent roadwork probably knocked it out. I set a gin spike at coordinates previously established on the railroad spike. This position matches with survey work in the area.

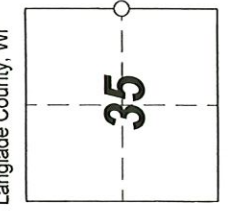
**Physical description of the monument set:**

Set gin spike at corner location, tied out as shown below.

Describe the accessories used to perpetuate the location of the corner. Include a plan view drawing and indicate accessories found/set. Describe measuring point on bearing trees. Show any topographic features that would aid in future recovery of the corner.



The EAST 1/4  
 Corner of Section 35  
 T. 31 N., R. 11 E.  
 Langlade County, WI



NOTES  
 - SKETCH NOT DRAWN TO SCALE.  
 - TIE BEARINGS SHOWN ARE LANGLADE COUNTY GRID BEARINGS.  
 - ALL TIES MEASURED ELECTRONICALLY WITH TOTAL STATION.

SURVEYORS SEAL



I, Michael J. Hoffman certify that the corner location shown on this record was determined by me or under my direction and control and that this U.S. Public Land Survey Monument Record is correct and complete to the best of my knowledge and belief.

Michael J. Hoffman 09-27-2023 Date  
 Signature

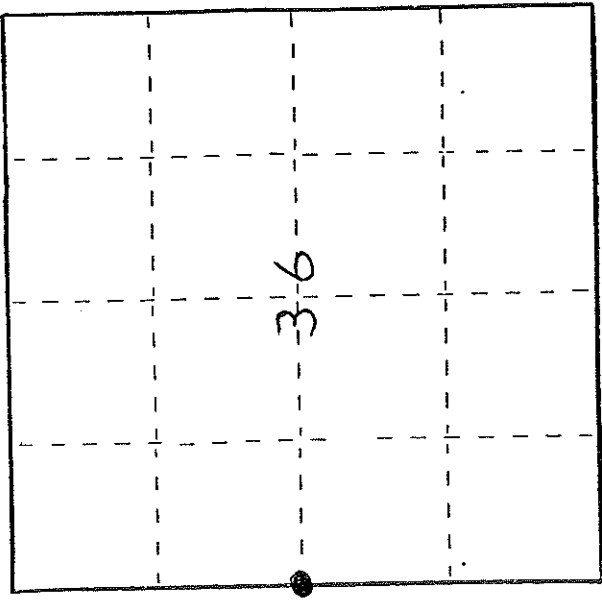
○ = Location of corner

4311352000

# U. S. PUBLIC LAND SURVEY MONUMENT RECORD

**I N S T R U C T I O N S :** This record shall show the location of the corner and shall include all of the following nine elements (a through i).

- (a) Identify the corner by reference to the U.S. public land survey system.  
O = Corner monument restored.  
CORNER ESTABLISHED ON ORIGINAL SURVEY BY H.C. FELLOWS IN SEPT 1860  
CORNER PERPETUATED BY B.F. DOOR IN 1881 AND M. HUTCHINSON IN 1931

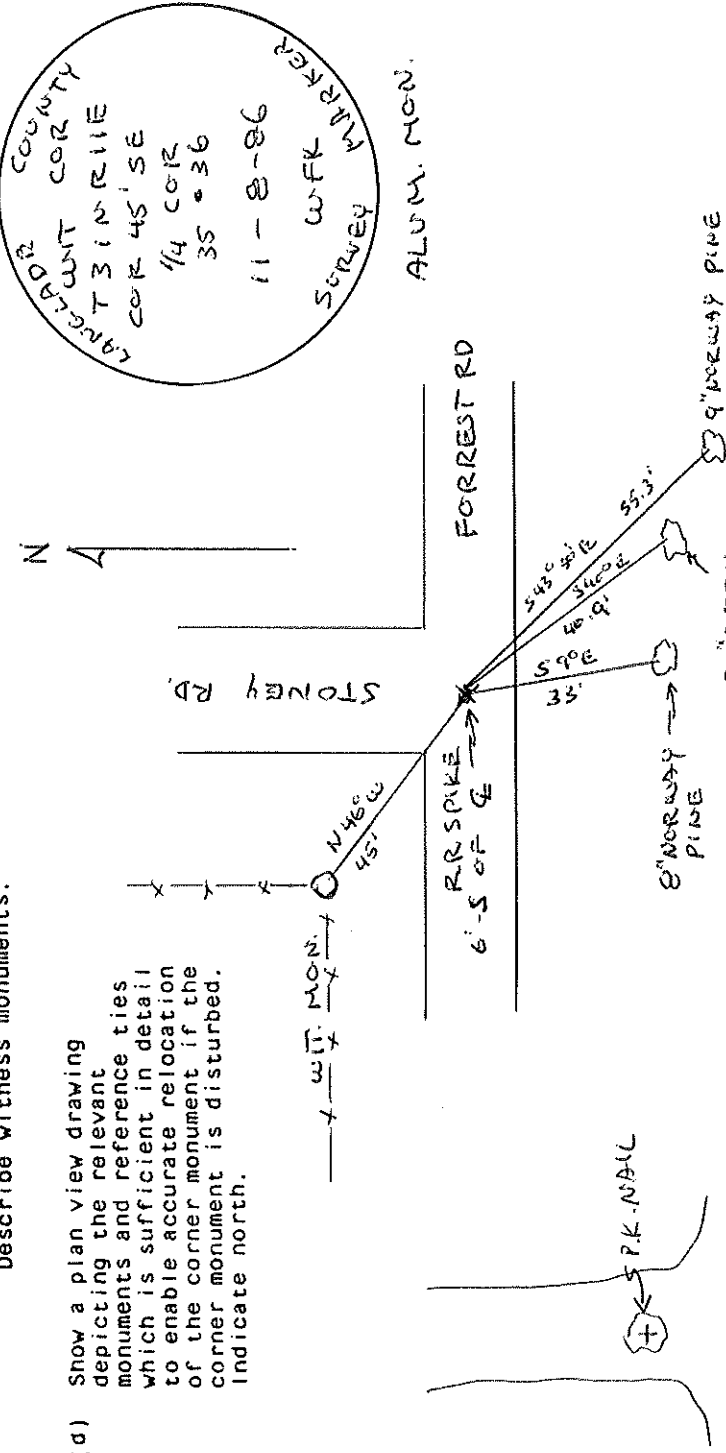


T 31 N R 11 E  
A N T I G O

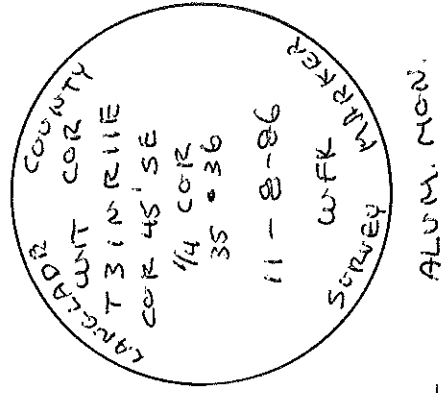
- (b) Describe any record evidence, monument evidence, occupational evidence, testimonial evidence or any other material evidence you considered, and whether the monument was found or placed.

RECOVERED HUTCHINSON'S PUMP POINT AND SET R.R. SPIKE IN ROAD OVER PUMP POINT. SET WITNESS CORNER AND MARKED BEARING TREES

- (c) In the plan view drawing below, provide reference ties to at least 4 witness monuments, or, if the location is within a municipality, to at least 2 witness monuments. (Witness monuments shall be made of concrete, natural stone, iron or other equally durable material.) Describe witness monuments.



- (d) Show a plan view drawing depicting the relevant monuments and reference ties which is sufficient in detail to enable accurate relocation of the corner monument if the corner monument is disturbed. Indicate north.



(e) Describe any material discrepancy between the location of the corner as restored or reestablished and the location of that corner as previously restored or reestablished by distance and direction. Show the discrepancy on the plan view drawing under (d), above. Show the distances between the corner as previously restored or reestablished and (1) the corner as restored or reestablished, and (2) to at least 2 of the witness monuments shown on the drawing in (d), above.

NONE

43111352000

(f) Was the corner restored through acceptance of (1) an obliterated evidence location, or, (2) a found perpetuated location?

(2)

(g&h) Was the corner reestablished through lost corner proportionate methods? If so, show the method, including the directions and distances to other public land survey corners used as evidence or used for proportioning in determining the corner location?

PERPETUATED LOCATION

(i) I, WILLIAM F. KELLY  
(Type or print name) certify that the corner location shown on this record was determined by me or under my direction and control and that this U.S. Public Land Survey Monument Record is correct and complete to the best of my knowledge and belief.

William F. Kelly 12-11-86  
Signature Date

