

4311135 0000

# U.S. PUBLIC LAND SURVEY MONUMENT RECORD

(Prepared and as required by S. A-E 7.08 WI Administrative Code)

The SOUTHEAST corner of Section 35, T. 31 N., R. 11 E., Langlade County, WI  
Corner was (check all that apply)

- Restored through acceptance of an obliterated evidence location.
- Restored through acceptance of a found perpetuated location.
- Determined to be lost and re-established through proportionate methods. (show bearings and distances to PLSS corners used for proportioning.)
- Restored/recovered/re-established in a location that differs from a previously established position. (Show difference in plan view below.)
- Check here if additional information is shown on the reverse side of this form.

### Describe record evidence, recovered physical evidence, occupational evidence, testimonial evidence, and all other evidence considered in the recovery/restoration of the corner.

1851 - J.M. Marsh set original corner section post; Hemlock 12", N89°E, 236 links; Hemlock 12", N87 1/2°W, 234 links; Hemlock 14", N87°W, 294 links; Elm 12", N88°W, 268 links.

1879 - Deleglise, worked from the East 1/4 corner to the Southeast corner of section 35, at 37.60 chs., he found "original U.S. 5 inches square and 6 feet high tamarack post, in a good condition in the middle of Hay marsh, Hemlock 18" N82°E, 281 links, Dead Hemlock 16" N84°E, 283 links and 2 new bearing tress Sugar 8" N53°E, 325 1/3 links, Sugar 12" N32 1/4°W, 327 links."

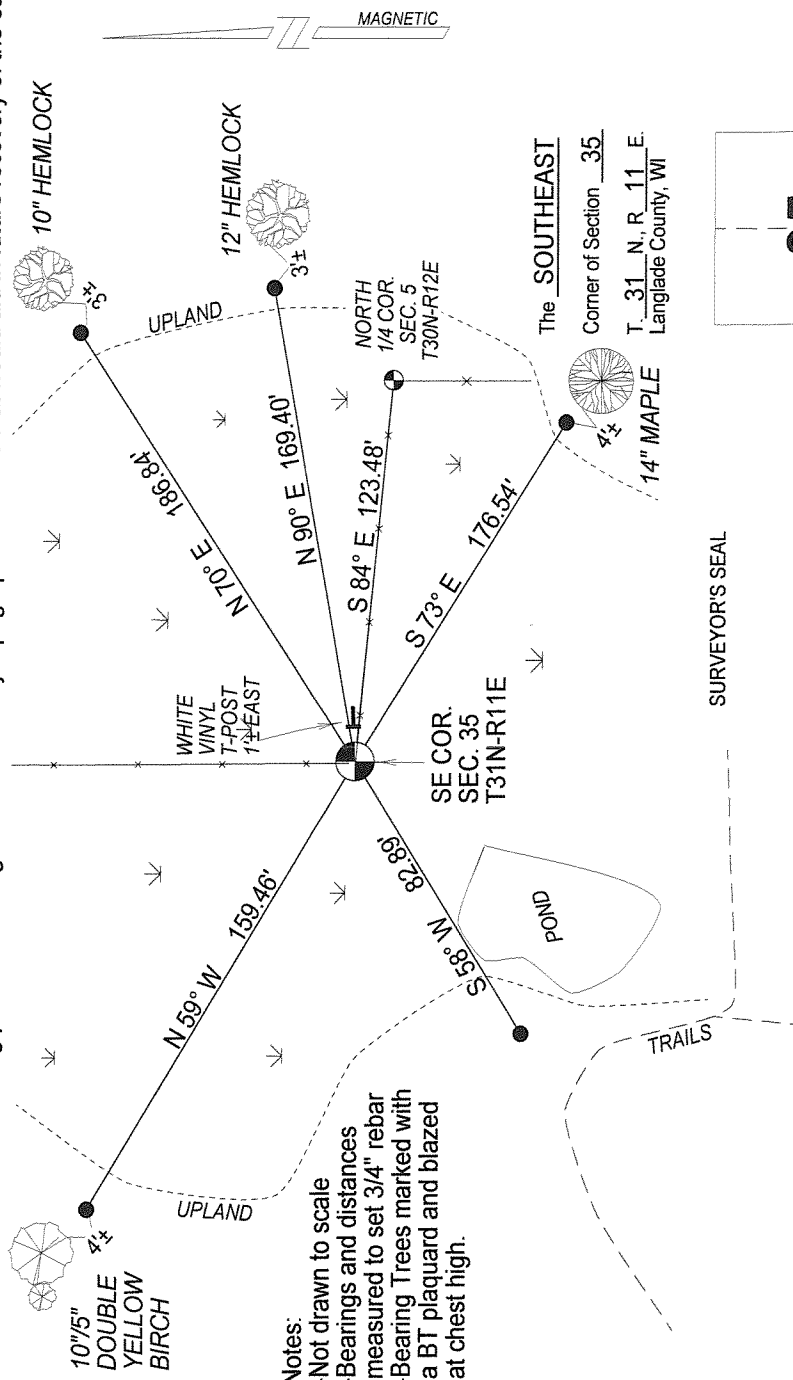
1931 - Hutchinson, working from the Southeast corner to the South 1/4 of Section 35, describes this corner as "SE corner in swamp" and "found old stake".

2013 - Surveying in Section 5 T30N-R12E, I found an existing 2" Iron pipe with a Langlade County brass cap at the Corner location. (The cap does not indicate when it was set, or by whom. There was no tie sheet on file with Langlade County). Corner falls at the existing intersection of fences from the north, east, and west.

### Physical description of the monument set:

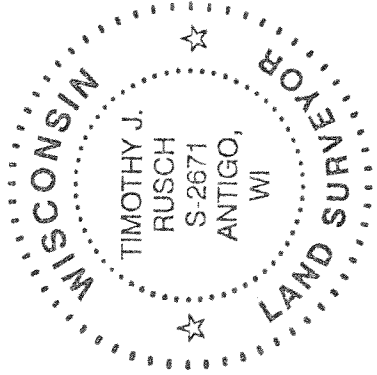
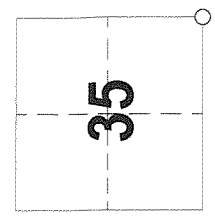
I accept the brass capped iron pipe as corner location, and tied it out as follows.

Describe the accessories used to perpetuate the location of the corner. Include a plan view drawing and indicate accessories found/set. Describe measuring point on bearing trees. Show any topographic features that would aid in future recovery of the corner.



- Notes:
- Not drawn to scale
  - Bearings and distances measured to set 3/4" rebar
  - Bearing Trees marked with a BT plaquard and blazed at chest high.

INDEX No. Z-21 (31-11)



I, Timothy J. Rusch certify that the corner location shown on this record was determined by me or under my direction and control and that this U.S. Public Land Survey Monument Record is correct and complete to the best of my knowledge and belief.

Timothy J. Rusch 05-24-2013  
Signature Date

○ = Location of corner