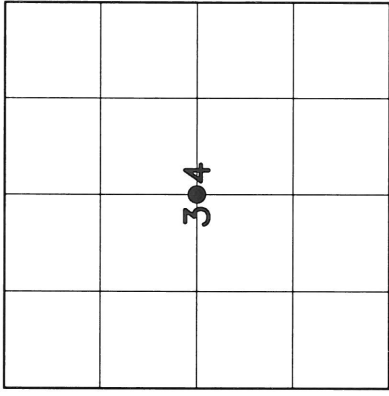


43111 34 2020 U.S. PUBLIC LAND SURVEY MONUMENT RECORD

HISTORY OF ORIGINAL CORNER ESTABLISHMENT AND SUBSEQUENT RESTORATION AND DESCRIPTION OF ANY RECORD, MONUMENT OCCUPATIONAL, TESTIMONIAL OR OTHER EVIDENCE CONSIDERED:

THIS CORNER WAS ORIGINALLY SET BY BF DORR IN 1901 NEVER STATING WHAT HE SET. IN 1997 TLUSTY FOUND A 3/4" ROD 13" BELOW THE ROAD SURFACE AND SET AN ALUM. CAPPED MONUMENT. WE WERE UNABLE TO RECOVER THE ALUM. MONUMENT AND 2 OF TLUSTY'S TIES. WE FOUND THE OTHER 2 TIES AND WHEN COMPARING WITH OTHER SECTION CORNERS WE SET A GEAR HEAD SPIKE AT THE TIE DISTANCE INTERSECTION AND SOME ADDITIONAL TIES.

● = LOCATION OF CORNER

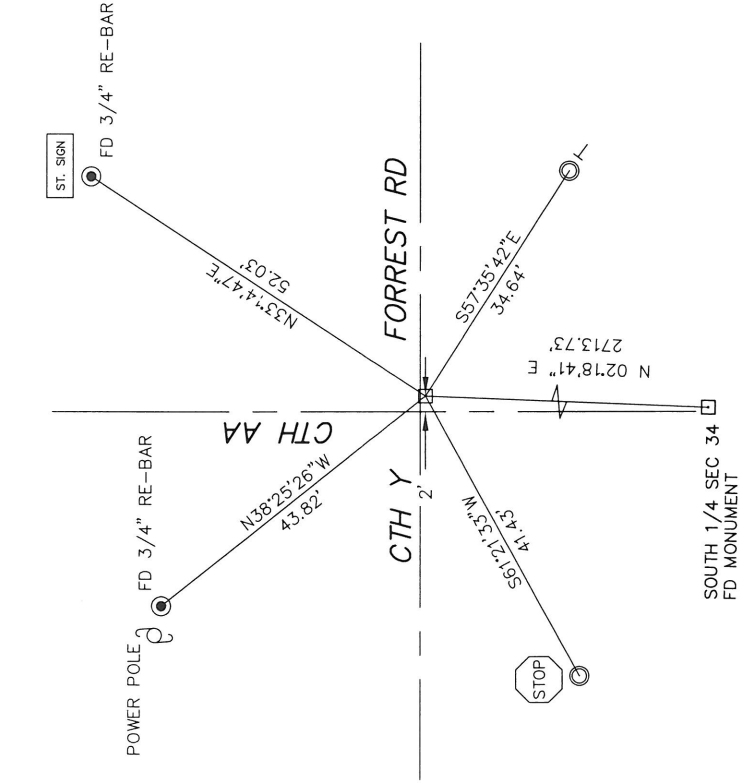


SECTION 34
TOWNSHIP 31 NORTH, RANGE 11 EAST
TOWN OF ANTIGO
LANGLADE COUNTY, WISCONSIN

CORNER WAS: (CHECK ALL THAT APPLY)

- RESTORED THROUGH ACCEPTANCE OF AN OBLITERATED EVIDENCE LOCATION
- RESTORED THROUGH ACCEPTANCE OF A FOUND PERPETUATED LOCATION
- CONSIDERED A LOST CORNER AND REESTABLISHED THROUGH LOST CORNER PROPORTIONATE METHODS (INCLUDE A PLAN VIEW DRAWING SHOWING DISTANCES AND DIRECTIONS TO OTHER PUBLIC LAND SURVEY CORNERS USED FOR PROPORTIONING AND DETERMINING THE CORNER LOCATION)
- RESTORED OR REESTABLISHED IN A LOCATION THAT DIFFERS FROM A PREVIOUS RESTORATION OR REESTABLISHMENT (INCLUDE A PLAN VIEW DRAWING AND INDICATE WHAT WAS SET AND/OR FOUND)
- CHECK IF THERE IS ADDITIONAL INFORMATION ON BACK

DESCRIBE THE MONUMENT AND ACCESSORIES USED TO PERPETUATE THE LOCATION OF THE CORNER. (INCLUDE A PLAN VIEW DRAWING AND INDICATE WHAT WAS SET AND/OR FOUND) ALSO INCLUDE FOUR TIES TO THE SECTION CORNER AND DESCRIPTION OF THE TIES.



SET 3/4" X 30" RE BAR AT THE LOCATIONS

BEARINGS REFERENCED TO THE LANDGLADE COUNTY COORDINATE SYSTEM

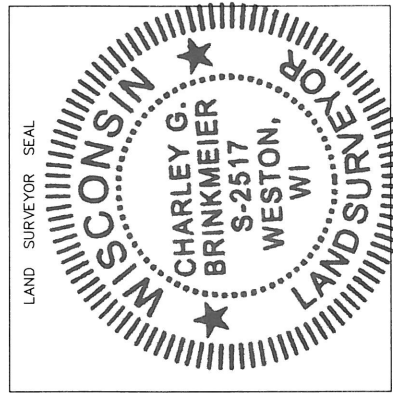


CHARLEY G. BRINKMEIER

(Type or print name) CERTIFY THAT THE CORNER LOCATION SHOWN ON THIS RECORD WAS DETERMINED BY ME OR UNDER MY DIRECTION AND CONTROL AND THAT THIS U.S. PUBLIC LAND SURVEY MONUMENT RECORD IS CORRECT AND COMPLETE TO THE BEST OF MY KNOWLEDGE AND BELIEF.

Charley G. Brinkmeier
SIGNATURE

10-10-12
DATE



15-31-11

INDEX NO.