

LANGLADE COUNTY U.S. PUBLIC LAND CORNER RESTORATION

The Center of Section 34, T. 31 N., R. 11 E., Langlade County, WI.

Corner was: (check all that apply)

4/ 3111342020

- Restored through acceptance of an obliterated evidence location.
- Restored through acceptance of a found perpetuated location.
- Determined to be lost and re-established through proportionate methods.
- Show bearings and distances to PLSS corners used for proportioning, and show original distances).
- Restored/recovered/re-established in a location that differs from a previously established position.
- (Show difference in plan view below).
- Check here if additional information is shown on the reverse side of this form.

Describe record evidence, recovered physical evidence, occupational evidence, testimonial evidence and all other evidence considered in the recovery/restoration of the corner.

This corner was not monumented in the original government survey. B.F. Dorr did a subdivision survey of Section 34 around 1901 (FB140-104). He measured the E-W and N-S quarter lines, established the center of Section 34 but didn't say what he set for a monument. 05/07/1997 D. Tlusty, B. Markowski, after measuring to the 4 quarter corners, determined search area and dug. At 13" down, found a very old 3/4" iron rod with a 1" cap of sorts. On the north edge of this rod, found a 1 1/2" x 2" squared wood stake. Accepted the 3/4" iron rod as the best evidence of the previously established corner.

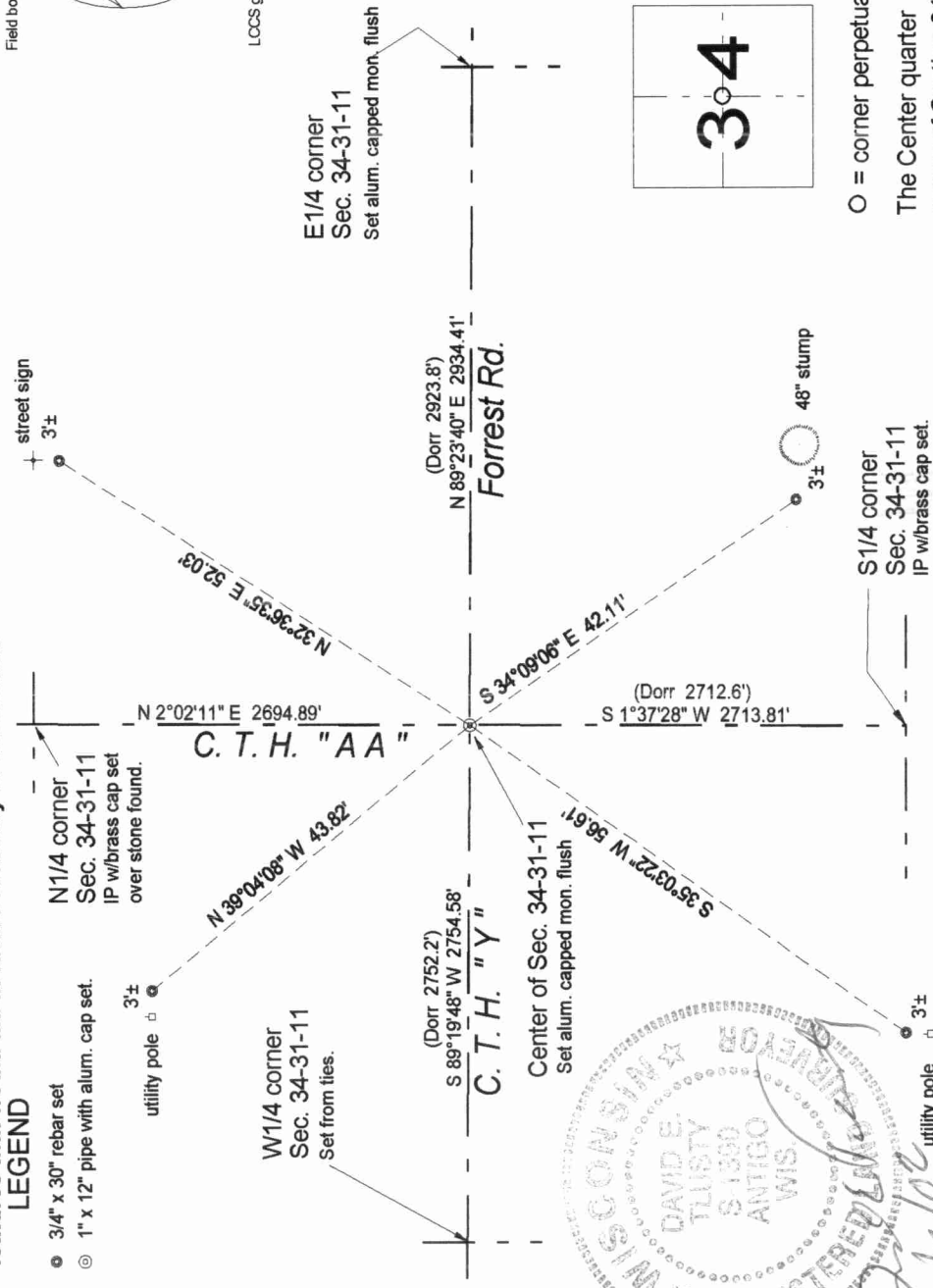
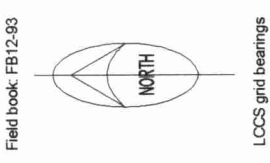
Physical description of the monument set:

Over the top of the iron rod found, I set a 1" x 12" iron pipe with a 2" aluminum cap set flush to the road surface.

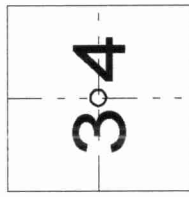
Describe the accessories used to perpetuate the corner. Include a plan view drawing and accessories found/set. Describe measuring point on bearing trees. Show any topographic features that would aid in future recovery of the corner.

LEGEND

- 3/4" x 30" rebar set
- ⊙ 1" x 12" pipe with alum. cap set.
- utility pole



Index No. 15 31-11



○ = corner perpetuated
The Center quarter corner of Section 34, T. 31 N., R. 11 E., Langlade County, WI



I, David E. Tlusty, Registered Land Surveyor, as Langlade County Surveyor, certify that the corner location on this record was determined by me and that this U.S. Public Land Survey Monument Record is correct to the best of my knowledge and belief.

