

CERTIFIED LAND CORNER RESTORATION

Index No. X-7

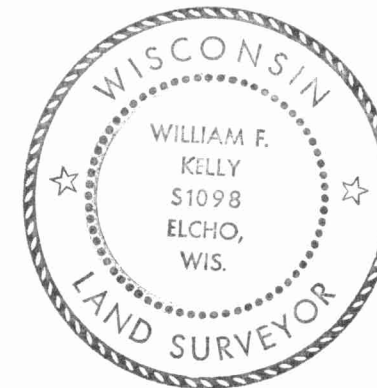
State of Wisconsin } ss.  
County of LANGLADE

History of original corner establishment:

I W.M. F. KELLY, do hereby certify that on the 15<sup>TH</sup> day of OCTOBER, 1974, I found evidence of the CENTER of SECTION corner of SECTION 32 Township 31, North, Range R.11E.A1, Fourth Principal Meridian, as described hereon; and that from this evidence I established a new monument and accessories as described hereon to perpetuate the original location of this corner.

Description of corner evidence found:

STONE W/X IN TOP

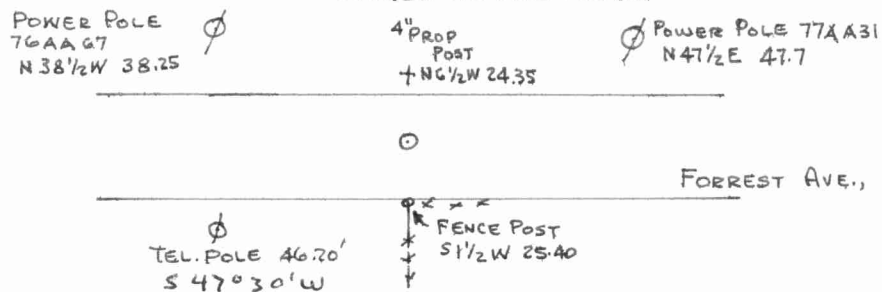


*William F. Kelly*

Resident witnesses:

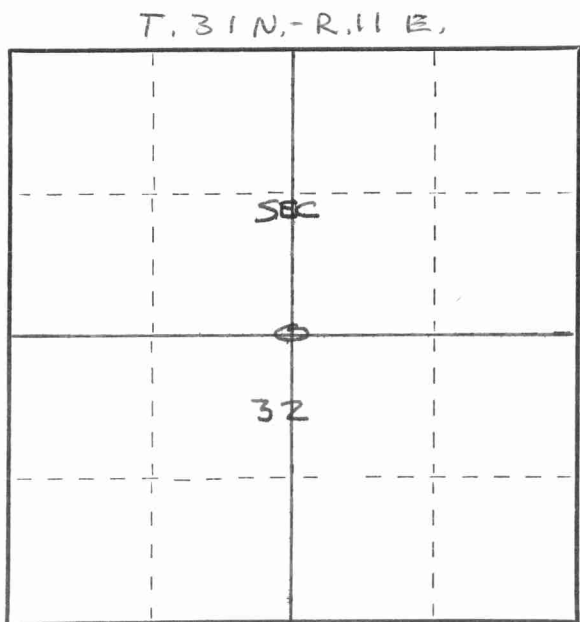
Description of monument and accessories I established to perpetuate the original location of this corner.

SET CONG. MON. W/BRASS CAP OVER X IN STONE - E BR SPIKE ALONG SIDE  
SET PK NAILS IN ALL POSTS.



FORM 985 H. C. MILLER CO., MILWAUKEE

431132020



○ = Corner monument restored.

Dated at ELCHO, Wis., this 15<sup>TH</sup> day of OCTOBER, 1974

Signature William F. Kelly Title REG. LAND SURVEYOR Registration No. S-1098  
(County Surveyor, Registered Land Surveyor, or other duly authorized official)

Office of Register of Deeds, County of \_\_\_\_\_, I hereby certify that the within instrument was filed in this office for record on the \_\_\_\_\_ day of \_\_\_\_\_, 19\_\_\_\_ at \_\_\_\_\_ o'clock \_\_\_\_\_ M.

(Register of Deeds)

By \_\_\_\_\_ Deputy

