

LANGLADE COUNTY U.S. PUBLIC LAND CORNER RESTORATION

The East quarter corner of Section 32, T. 31 N., R. 11 E., Langlade County, WI.

Corner was: (check all that apply)

6111322000

- Restored through acceptance of an obliterated evidence location.
- Restored through acceptance of a found perpetuated location.
- Determined to be lost and re-established through proportionate methods.
- Show bearings and distances to PLSS corners used for proportioning, and show original distances).
- Restored/recovered/re-established in a location that differs from a previously established position.
- (Show difference in plan view below).
- Check here if additional information is shown on the reverse side of this form.

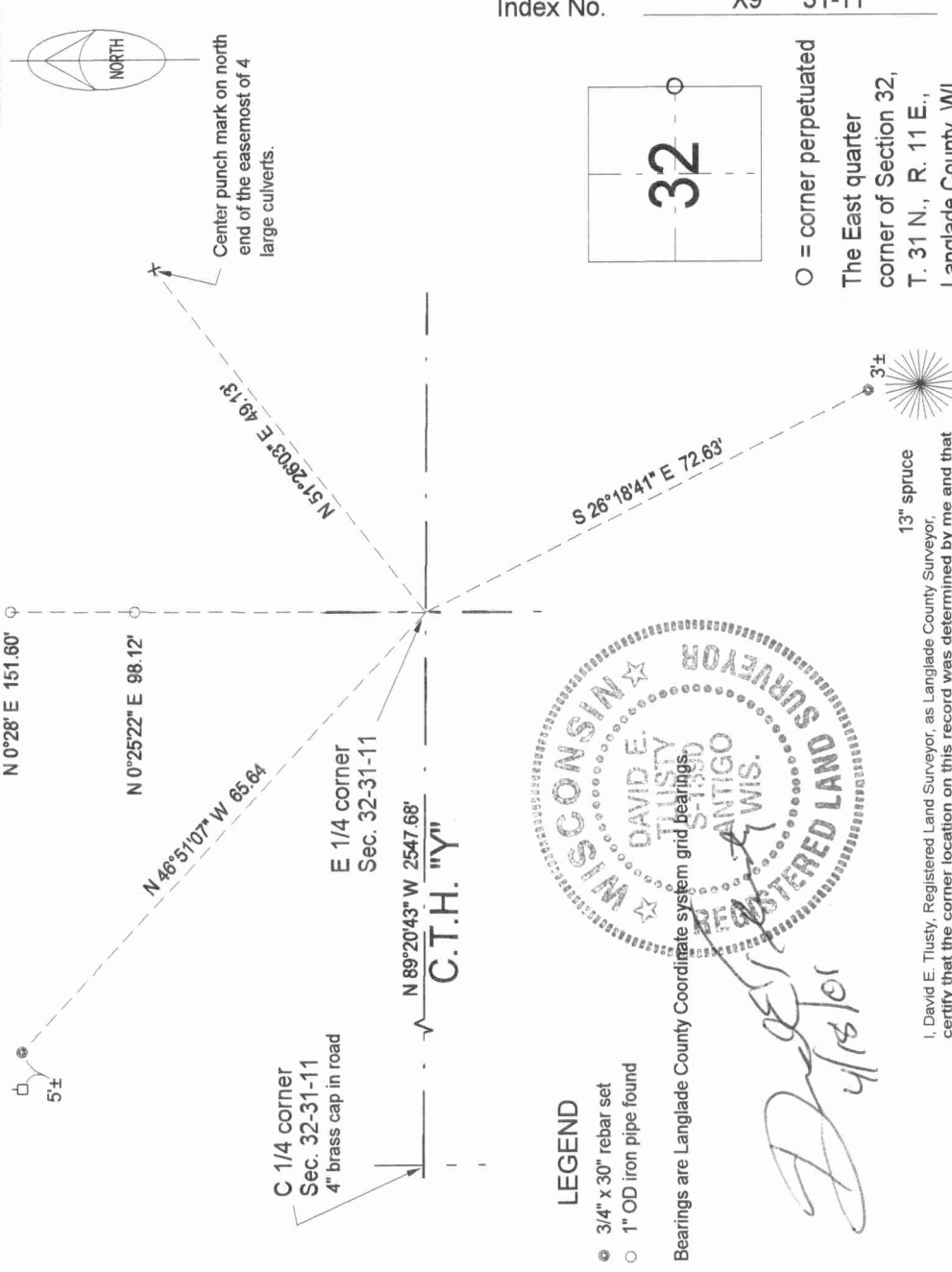
Describe record evidence, recovered physical evidence, occupational evidence, testimonial evidence and all other evidence considered in the recovery/restoration of the corner.

The original corner was established in 1860 by Hiram C. Fellows. Original bearing trees: birch 15", S75°W, 27 links, and a birch, 16", N57°E, 30 lks. In 1910, E.S. Brooks, measured east from the center of section 32, at 1274.1' he set "gass" pipe for 1/8 corner. In 1993, I dug for the 1/4 corner with a County backhoe. At 6' down, we found a 1 1/4" x 36" well point, upright and in good condition. I accept this well point as the best evidence of the original corner location. I replaced the well point with a 1 1/4" x 24" pipe with 4" brass cap, top of which is 5.8' below the road surface. The distance from here to the center of Section 32 agrees with Brooks. I set temporary ties to hold corner position during road construction. 4/06/94 Tom Arnott set a PK nail from my temporary ties. 08/18/98 I checked the temporary ties and replaced the PK with a 1/2" x 12" rebar, 12" down, then topped this rebar with a 1 1/4" x 18" iron pipe with 4" brass cap flush with the new road surface.

Physical description of the monument set:

Surface monument is a 1 1/4" x 18" iron pipe with 4" brass cap set flush with the road.

Describe the accessories used to perpetuate the corner. Include a plan view drawing and accessories found/set. Describe measuring point on bearing trees. Show any topographic features that would aid in future recovery of the corner.



Index No. X9 31-11

I, David E. Trusty, Registered Land Surveyor, as Langlade County Surveyor, certify that the corner location on this record was determined by me and that this U.S. Public Land Survey Monument Record is correct to the best of my knowledge and belief.

