

LANGLADE COUNTY U.S. PUBLIC LAND CORNER RESTORATION

The South quarter corner of Section 32, T. 31 N., R. 11 E., Langlade County, WI.

Corner was: (check all that apply)

43111320020

- Restored through acceptance of an obliterated evidence location.
- Restored through acceptance of a found perpetuated location.
- Determined to be lost and re-established through proportionate methods.
- Show bearings and distances to PLSS corners used for proportioning, and show original distances).
- Restored/recovered/re-established in a location that differs from a previously established position.
- (Show difference in plan view below).
- Check here if additional information is shown on the reverse side of this form.

Describe record evidence, recovered physical evidence, occupational evidence, testimonial evidence and all other evidence considered in the recovery/restoration of the corner.

The original corner was established in 1851 by James, M. Marsh. Original bearing trees: birch, 11", N78°E, 49 links, a sugar, 11", N72°E, 30 links, and a sugar, 8", N19°W, 53 links. From Wayne Dobbratz tie sheet dated 4/9/93: "Assessors Plat by Olk in 1947 denotes South 1/4 corner. CSM recorded in Vol 4, on Pages 250-251 denote aluminum monument found at south 1/4 corner, maps by Kelly S-1098. Monument found by Dobbratz S-973 agree with location as per adjoining Certified Survey Maps."

12/03/01 D. Tlusty, found road paved over. Measured ties by Dobbratz. Computed corner location by single proportion between his witness monuments north and south of the corner as shown. Re-measured to his other 2 witness monuments found.

Physical description of the monument set:

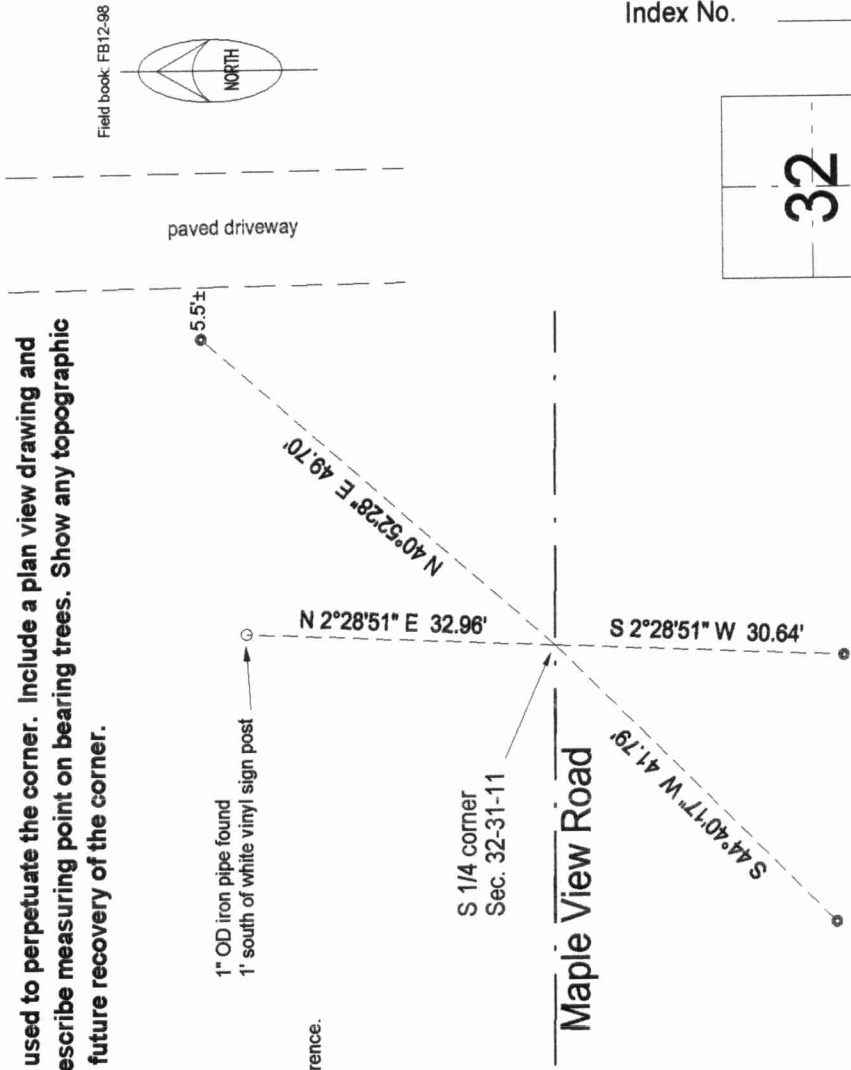
Small nail set in frozen road.

Describe the accessories used to perpetuate the corner. Include a plan view drawing and accessories found/set. Describe measuring point on bearing trees. Show any topographic features that would aid in future recovery of the corner.

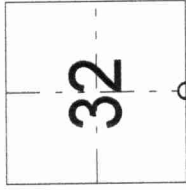
LEGEND

- 3/4" x 30" rebar found
- 1" OD iron pipe found

Bearings are locally assumed reference.



Index No. 27 31-11



○ = corner perpetuated

The South quarter corner of Section 32, T. 31 N., R. 11 E., Langlade County, WI

I, David E. Tlusty, Registered Land Surveyor, as Langlade County Surveyor, certify that the corner location on this record was determined by me and that this U.S. Public Land Survey Monument Record is correct to the best of my knowledge and belief.

