

# LANGLADE COUNTY U.S. PUBLIC LAND CORNER RESTORATION

The South 1/4 Corner of Section 31, T. 31 N., R. 11 E., Langlade County, WI.

**Corner was: (check all that apply)**

4/3111310020

- Restored through acceptance of an obliterated evidence location.
- Restored through acceptance of a found perpetuated location.
- Determined to be lost and re-established through proportionate methods.
- Show bearings and distances to PLSS corners used for proportioning, and show original distances).
- Restored/recovered/re-established in a location that differs from a previously established position.
- (Show difference in plan view below).
- Check here if additional information is shown on the reverse side of this form.

**Describe record evidence, recovered physical evidence, occupational evidence, testimonial evidence and all other evidence considered in the recovery/restoration of the corner.**

The original corner was established in 1851 by James M. Marsh. Original bearing trees: sugar, 12", N64°E, 53 links; a birch, 9", N62°W, 30 links; a hemlock, 14", S58°E, 44 links and a hemlock, 24", N 21°W, 28 links. In 1899, B.F. Dorr surveyed the North-South 1/4 line in Section 31. For this corner he found 2 orig. BT's and a stake hole that agreed with them. In 1994, Tom Arnott, didn't find anything here so he set the corner on line between the SW corner of Section 31 and the NE corner of Sec. 3-30-11 and in line with the fence to the north. He set a railroad spike for the corner. 05/24/00 D. Tlusty, M. Kielcheski found Arnotts RR spike and measured to his ties. Dug in the road with a backhoe. Found nothing. Accepted corner set by Arnott as the best evidence. Found nothing. Accepted corner set by Arnott

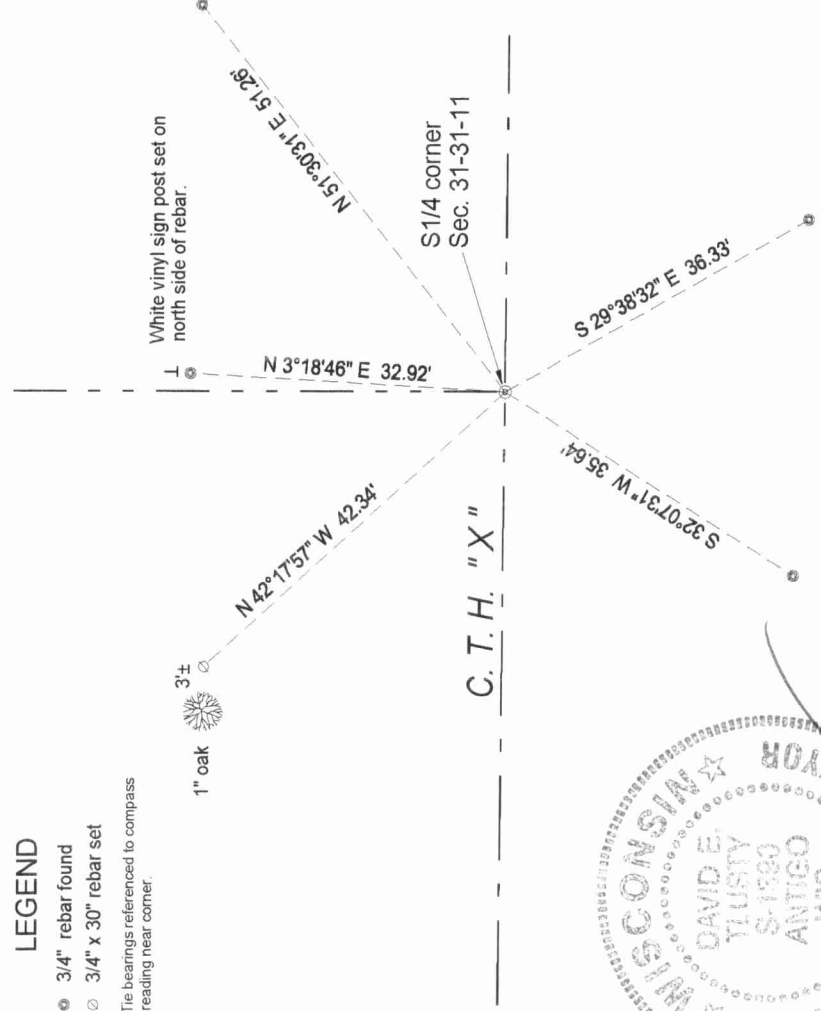
**Physical description of the monument set:**

Road is to be re-surfaced in the near future. Re-set nothing for the corner which is about 2' north of the centerline of pavement.

**Describe the accessories used to perpetuate the corner. Include a plan view drawing and accessories found/set. Describe measuring point on bearing trees. Show any topographic features that would aid in future recovery of the corner.**

**LEGEND**

- 3/4" rebar found
- 3/4" x 30" rebar set
- Tie bearings referenced to compass reading near corner.



Field book: FB10-57

Index No.                      Z3 31-11



○ = corner perpetuated  
The South quarter  
corner of Section 31,  
T. 31 N., R. 11 E.,  
Langlade County, WI

I, David E. Tlusty, Registered Land Surveyor, as Langlade County Surveyor, certify that the corner location on this record was determined by me and that this U.S. Public Land Survey Monument Record is correct to the best of my knowledge and belief.

