

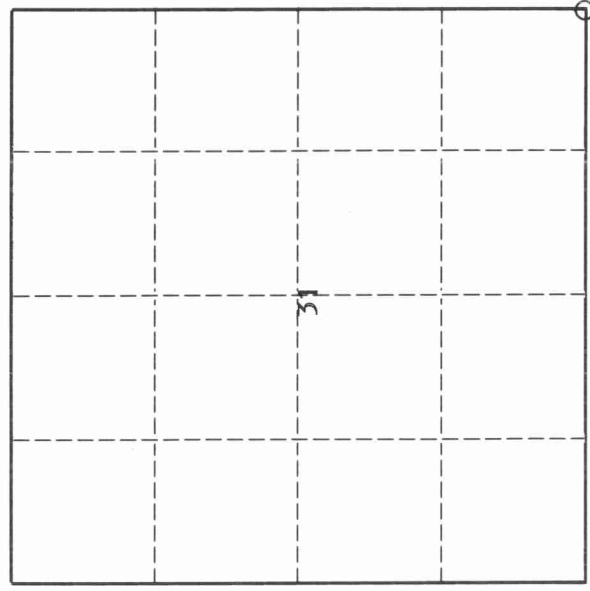
43111310000

U. S. PUBLIC LAND SURVEY MONUMENT RECORD

INSTRUCTIONS:

This record shall show the location of the corner and shall include all of the following nine elements (a through i).

- (a) Identify the corner by reference to the U.S. public land survey system.
- O = Corner monument restored.



Southeast corner of Section 31, T31N, R11E

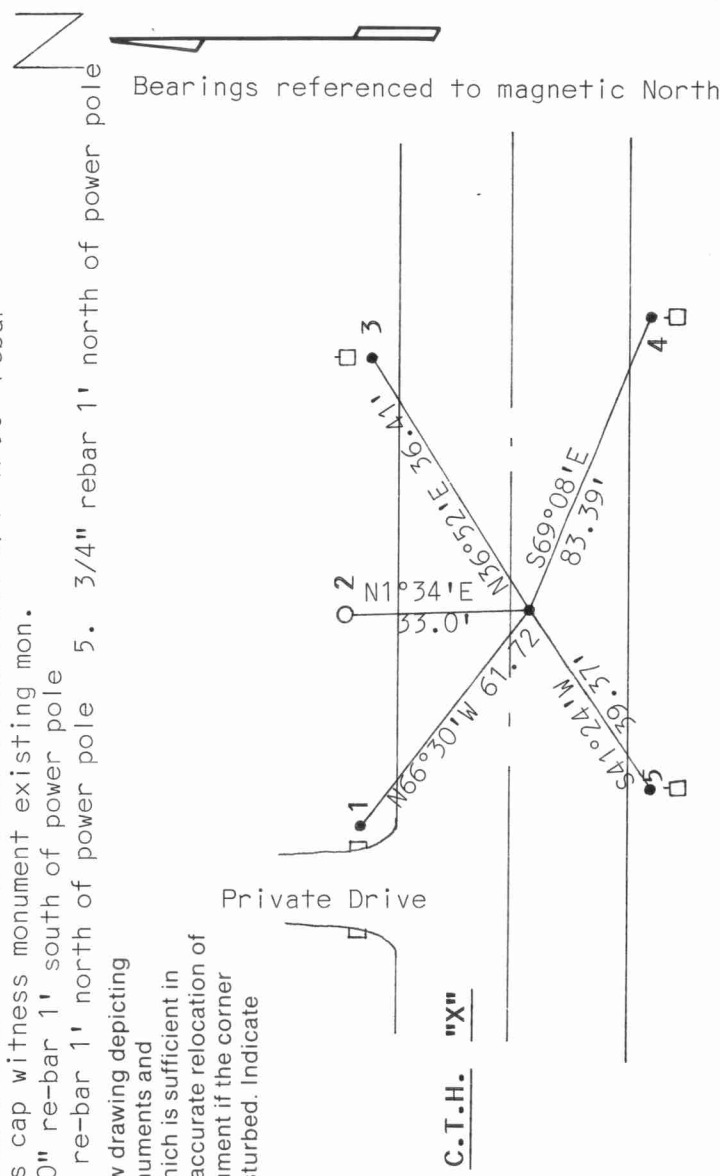
- (b) Describe any record evidence, monument evidence, occupational evidence, testimonial evidence or any other material evidence you considered, and whether the monument was found or placed.

We spoke with the County Surveyor William Kelly prior to beginning the Antigo Railroad Plat. He had established the corner by proportional measurement and through retracement of Grogan Addition. He had not placed the corner on record. We found an existing PK nail which fit occupation to north. Mr. Kelly said that was the corner. There was an existing witness monument in place

- (c) In the plan view drawing below, provide reference ties to at least 4 witness monuments, or, if the location is within a municipality, to at least 2 witness monuments. (Witness monuments shall be made of concrete, natural stone, iron or other equally durable material.)

- 2. 1 1/2" brass cap witness monument existing mon.
- 3. 3/4" X 30" re-bar 1' south of power pole
- 4. 3/4" X 30" re-bar 1' north of power pole
- 5. 3/4" rebar 1' north of power pole

- (d) Show a plan view drawing depicting the relevant monuments and reference ties which is sufficient in detail to enable accurate relocation of the corner monument if the corner monument is disturbed. Indicate north.



4311310000

Describe any material discrepancy between the location of the corner as restored or reestablished and the location of that corner as previously restored or reestablished by distance and direction. Show the discrepancy on the plan view drawing under (d), above. Show the distances between the corner as previously restored or reestablished and (1) the corner as restored or reestablished, and (2) to at least 2 of the witness monuments shown on the drawing in (d), above.

1. None
2. None

(f) Was the corner restored through acceptance of (1) an obliterated evidence location, or, (2) a found perpetuated location?
(2)

(g & h) Was the corner reestablished through lost corner proportionate methods? If so, show the method, including the directions and distances to other public land survey corners used as evidence or used for proportioning in determining the corner location.
Corner was reestablished by Mr. Kelly county surveyor and located by us.

(i) I, Edwin R. Abendroth RLS S-798
(type or print name)

certify that the corner location shown on this record was determined by me or under my direction and control and that this U.S. Public Land Survey Monument Record is correct and complete to the best of my knowledge and belief.

Edwin R. Abendroth

Signature

8-11-92

Date

