

CERTIFIED LAND CORNER RESTORATION

Index No. V-3

State of Wisconsin }
County of LANGLADE, } ss.

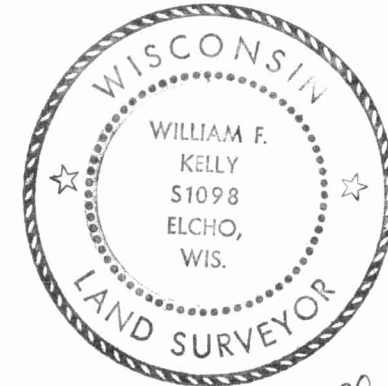
History of original corner establishment:

I Wm. F. KELLY, do hereby certify that on the 15TH day of OCTOBER, 1974, I found evidence of the 1/4 CORNER corner of SECS. 30 & 31 Township 31, North, Range 11 EAST, Fourth Principal Meridian, as described hereon; and that from this evidence I established a new monument and accessories as described hereon to perpetuate the original location of this corner.

Description of corner evidence found:
24" x 10" x 8" STONE UNDER RAILROAD SPIKE -

Dorr's Notes of sect. subdivision in 1885, 1887, and 1897

Note: Corner located by R.J. Hallisy in Sept 1970. wit. COR. set by Hallisy had been removed.

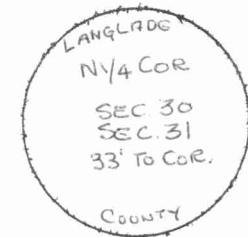
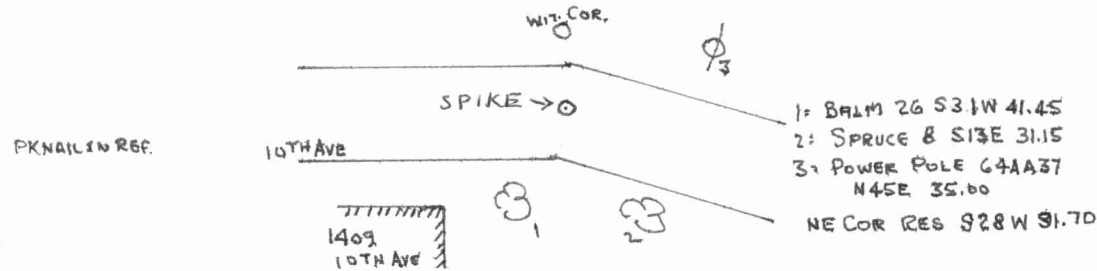
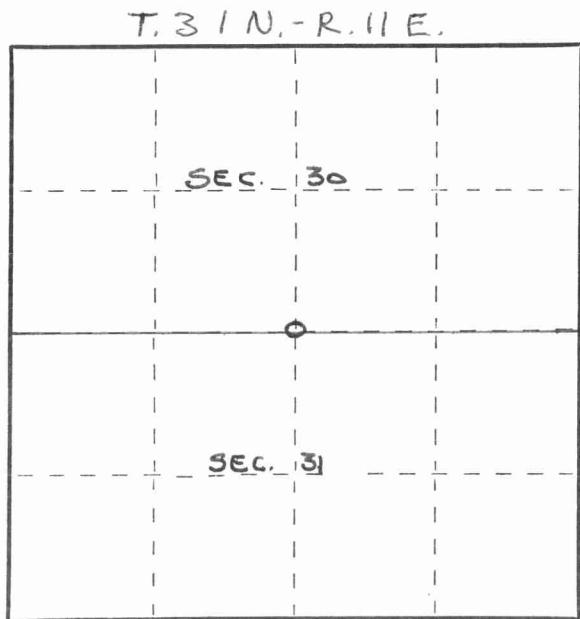


William F. Kelly

Resident witnesses:

Description of monument and accessories I established to perpetuate the original location of this corner.
EXISTING BRASS CAP MKD.

FORM 985 H. C. MILLER CO., MILWAUKEE



Dated at ELCHO, Wis., this 15TH day of OCTOBER, 1974

Signature William F. Kelly Title REG. LAND SURVEYOR Registration No. S-1098
(County Surveyor, Registered Land Surveyor, or other duly authorized official)

Office of Register of Deeds, County of _____, I hereby certify that the within instrument was filed in this office for record on the _____ day of _____, 19____ at _____ o'clock _____ M.

(Register of Deeds)

By _____ Deputy

○ = Corner monument restored.

431130020

