

LANGLADE COUNTY U.S. PUBLIC LAND CORNER RESTORATION

The Southwest corner of Section 29, T. 31 N., R. 11 E., Langlade County, WI.

Corner was: (check all that apply)

43111080020

- Restored through acceptance of an obliterated evidence location.
- Restored through acceptance of a found perpetuated location.
- Determined to be lost and re-established through proportionate methods.
- Show bearings and distances to PLSS corners used for proportioning, and show original distances).
- Restored/recovered/re-established in a location that differs from a previously established position.
- (Show difference in plan view below).
- Check here if additional information is shown on the reverse side of this form.

Describe record evidence, recovered physical evidence, occupational evidence, testimonial evidence and all other evidence considered in the recovery/restoration of the corner.

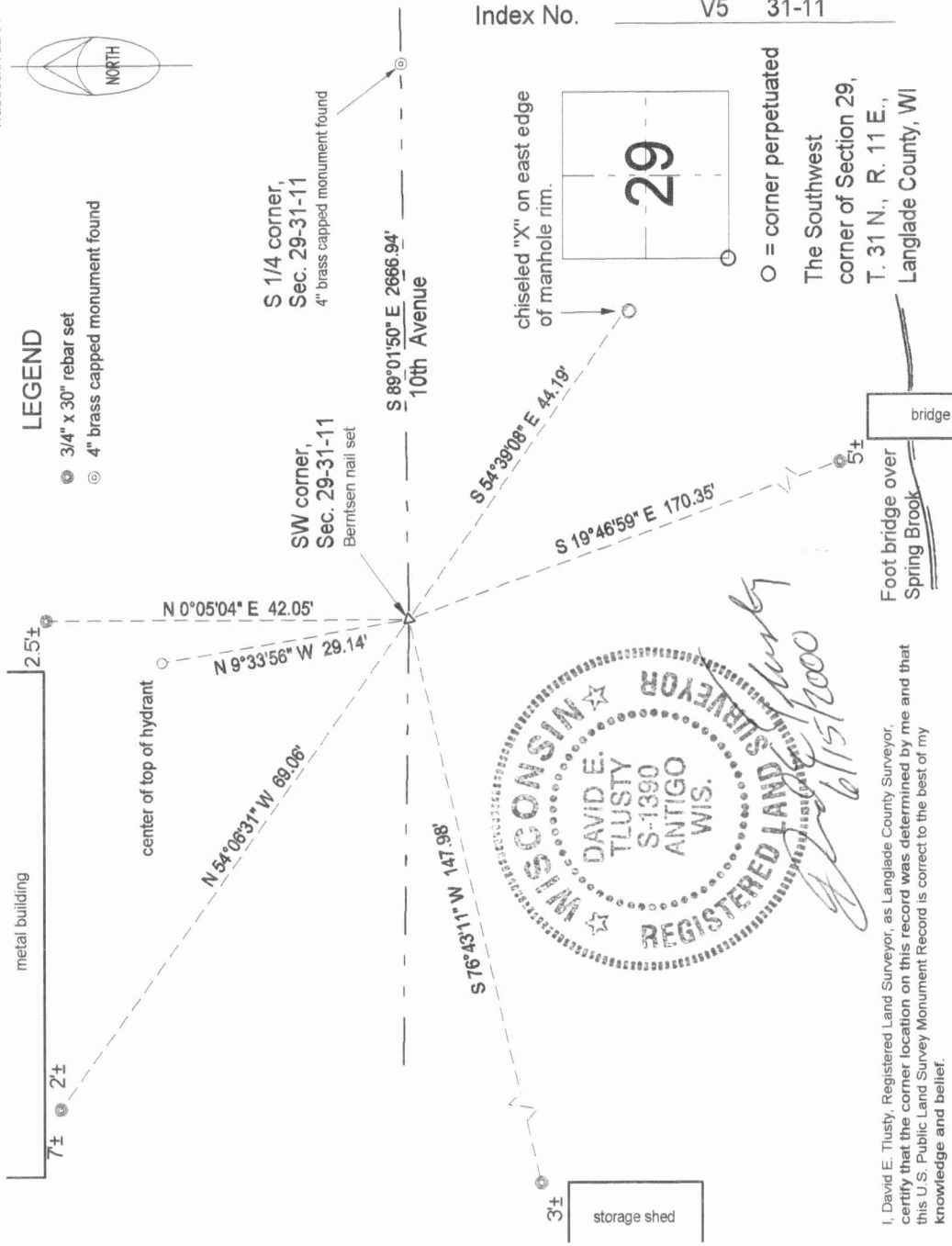
The original corner was established in 1860 by Hiram C. Fellows. Original bearing trees: hemlock, 10", N44°W, 13 links, and a hemlock, 10", S64°E, 16 lks. In 1877, L. Deleglise measured 2785.2' from this corner to the quarter corner to the west. I now measure 2778.81 feet. Dorrr used this corner in 1905 but didn't describe it. There is very little, good information on this corner in the records. Corner fell in the center of Tenth Ave. assumed corner was destroyed in road construction. Asked Mr. Kelly the County Surveyor to set corner. His crew established the corner (rr spike) from old records." (NOTE: Kelly didn't have surveyor license in 1992. DT) On 06/30/94 I found the RR spike under 3" of new pavement. Replaced it with a brass capped monument. On 09/13/99 I measured new ties shown hereon an removed the monument because sewer construction this year will destroy it. * On 04/07/00 I set a Berntsen SN-1 nail in new pavement to mark the corner previously established by Kelly.

** LOOKED FOR STONE OR OTHER EVIDENCE DURING CONSTRUCTION. FOUND NOTHING. 6/15/2000 D.T.*

Physical description of the monument set:

04/07/00 Set Berntsen SN-1 nail in new pavement.

Describe the accessories used to perpetuate the corner. Include a plan view drawing and accessories found/set. Describe measuring point on bearing trees. Show any topographic features that would aid in future recovery of the corner.



I, David E. Tlusty, Registered Land Surveyor, as Langlade County Surveyor, certify that the corner location on this record was determined by me and that this U.S. Public Land Survey Monument Record is correct to the best of my knowledge and belief.

Index No. V5 31-11

○ = corner perpetuated
The Southwest corner of Section 29, T. 31 N., R. 11 E., Langlade County, WI

Field book: FB2-84

LEGEND

- ⊙ 3/4" x 30" rebar set
- ⊙ 4" brass capped monument found



