

LANGLADE COUNTY U.S. PUBLIC LAND CORNER RESTORATION

The East quarter corner of Section 29, T. 31 N., R. 11 E., Langlade County, WI.

4/3111292000

Corner was: (check all that apply)

- Restored through acceptance of an obliterated evidence location.
- Restored through acceptance of a found perpetuated location.
- Determined to be lost and re-established through proportionate methods.
- Show bearings and distances to PLSS corners used for proportioning, and show original distances).
- Restored/recovered/re-established in a location that differs from a previously established position.
- (Show difference in plan view below).
- Check here if additional information is shown on the reverse side of this form.

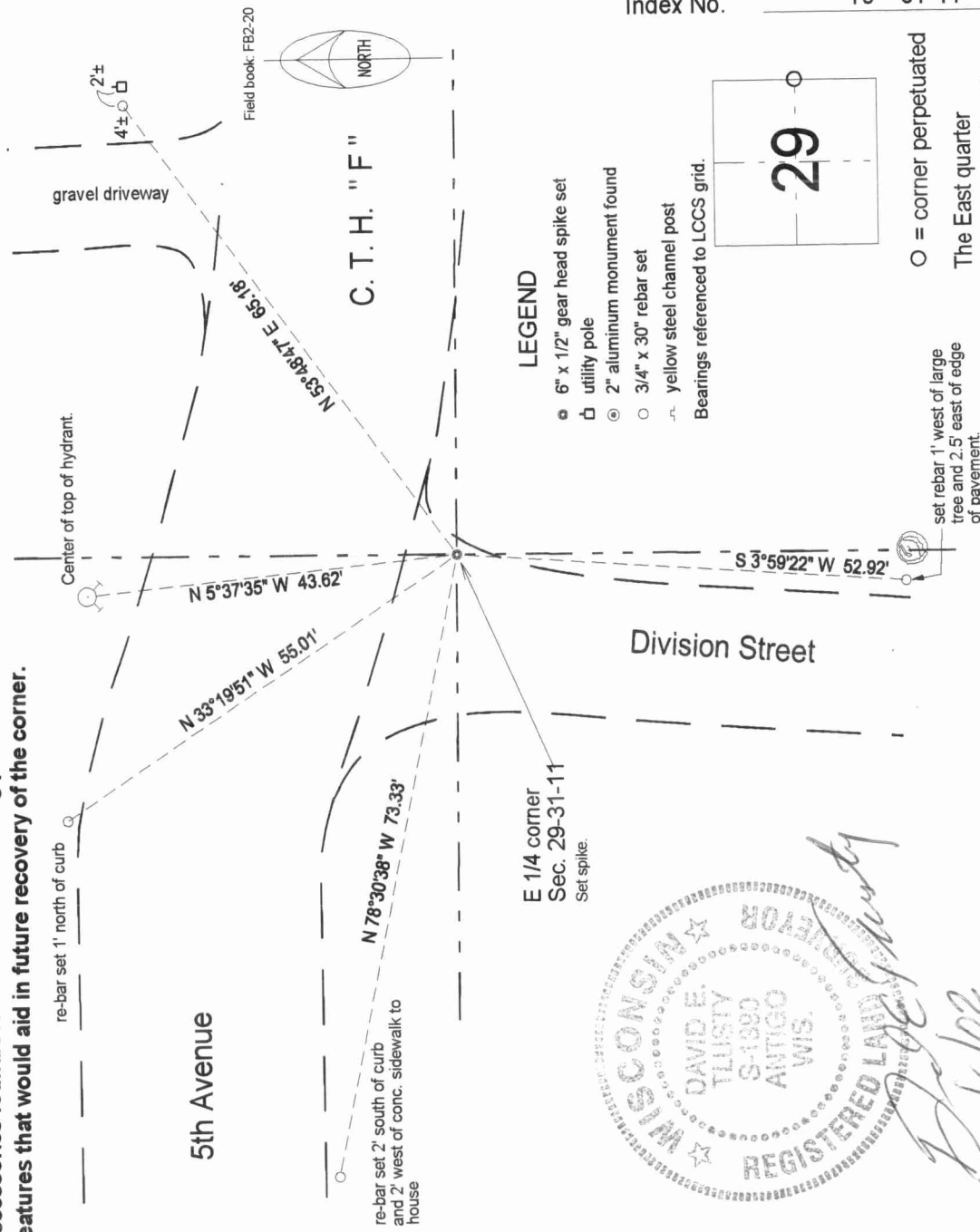
Describe record evidence, recovered physical evidence, occupational evidence, testimonial evidence and all other evidence considered in the recovery/restoration of the corner.

The original corner was established in 1860 by Hiram C. Fellows. Original bearing trees: tamarac, 12", S40°W, 14 links, and a birch, 6", N70°E, 12 lks. Many old survey records and plats within the City of Antigo are tied to this corner. Over the years, the general area for this corner has been excavated many times, mostly for utility construction, therefore old, physical evidence does not exist. In 1992, I found an old 1" iron pipe for the corner, which could have been the pipe shown on CSM Vol. 3, Pg. 259. CSM Vol. 9, Pg. 111 indicates "set gear spike from ties". June, 2001, I find a gear headed spike, but it doesn't match the location of the pipe found in 1992, by approx. 0.25 feet. I re-set the corner at the location of the pipe found in 1992. I pulled the gear headed spike found and set it in the 1992 location.

Physical description of the monument set:

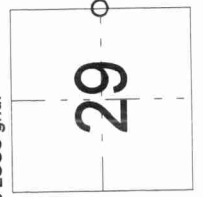
Gear headed spike set for corner.

Describe the accessories used to perpetuate the corner. Include a plan view drawing and accessories found/set. Describe measuring point on bearing trees. Show any topographic features that would aid in future recovery of the corner.



David E. Tlusty
3/16/02

Index No. T9 31-11



○ = corner perpetuated
The East quarter corner of Section 29, T. 31 N., R. 11 E., Langlade County, WI

I, David E. Tlusty, Registered Land Surveyor, as Langlade County Surveyor, certify that the corner location on this record was determined by me and that this U.S. Public Land Survey Monument Record is correct to the best of my knowledge and belief.

LANGLADE COUNTY
U.S. PUBLIC LAND CORNER RESTORATION

The East quarter corner of Section 29, T. 31 N., R. 11 E., Langlade County, WI.