

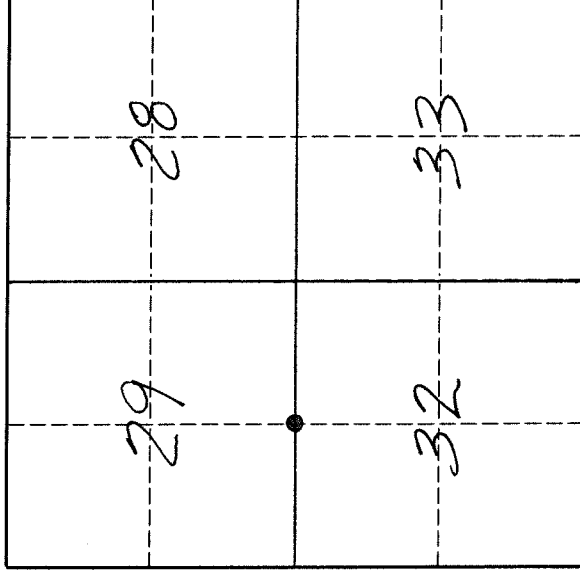
4311890020

U. S. PUBLIC LAND SURVEY MONUMENT RECORD

INSTRUCTIONS:

This record shall show the location of the corner and shall include all of the following nine elements (a through i).

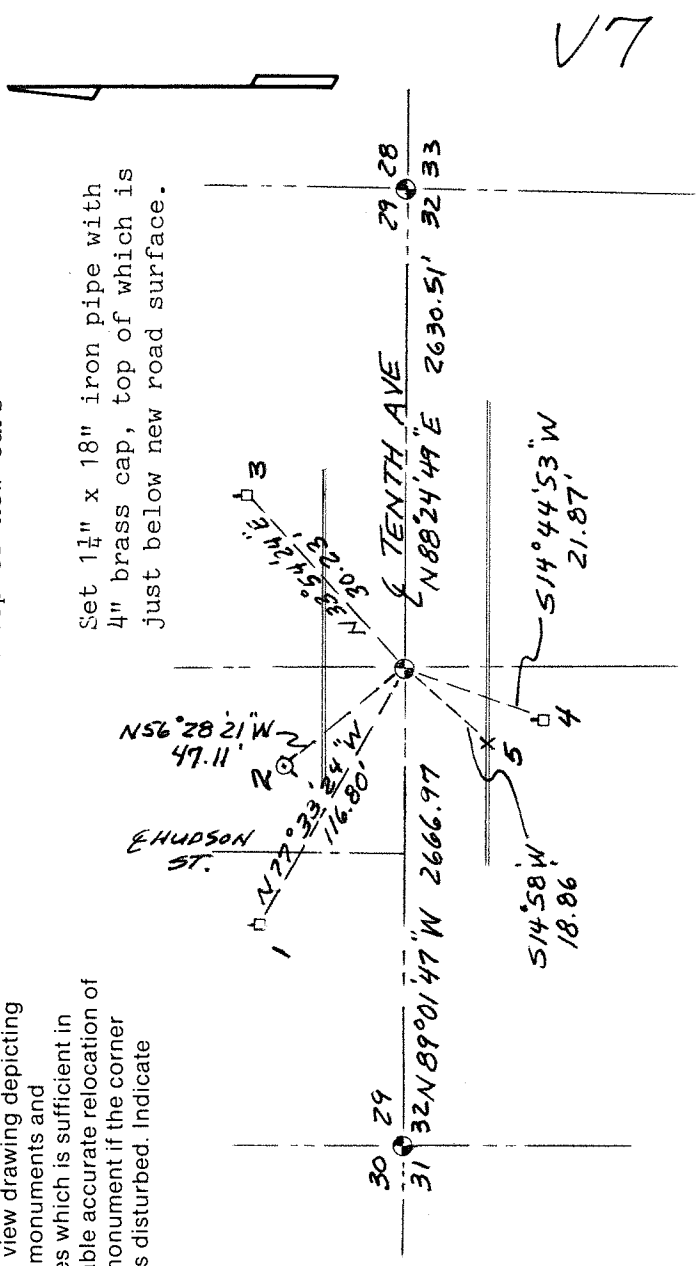
- (a) Identify the corner by reference to the U. S. public land survey system.
- = Corner monument restored.



The South Quarter corner of Section 29, Township 31 North, Range 11 East, Langlade County, Wisconsin.

T. 31 N., R. 11 E.

- (b) Describe any record evidence, monument evidence, occupational evidence, testimonial evidence or any other material evidence you considered, and whether the monument was found or placed.
The original corner was established in 1860 by Hiram C. Fellows. Original bearing trees: sugar, 12", S55°E, 27 lks., and birch, 20", N04°W, 19 lks. F.A. Deeglise, in 1878 for original plat of Antigo, found original BT's, set new post and marked new BT's. B.F. Dorr, in 1919 (FB97-153) measured from this corner 2594.5' south to the center of Section 32. Alex Deeglise, in 1919, on the plat of Berners Second Addition shows this corner as being a stone and the distance to a stone at the CN1/16 corner of Section 32 was measured as 1297.21'. April 1994, I find that all original and subsequent evidence of the corner has been destroyed by construction of sewer lines in 10th Ave. I re-set this corner on an extension of a line from the C $\frac{1}{4}$ of Section 32, through the CN 1/16 of Section 32, and at the same distance between said corners. See comparative sketch on reverse.
- (c) In the plan view drawing below, provide reference ties to at least 4 witness monuments, or, if the location is within a municipality, to at least 2 witness monuments. (Witness monuments shall be made of concrete, natural stone, iron or other equally durable material.)
Describe witness monuments.
 1. PK nail found in NE side of power pole
 2. Center of top of new hydrant (installed 1993)
 3. PK nail & washer set in NW side of power pole
 4. " " " " " " " "
 5. Chiseled "X" in top of new curb
- (d) Show a plan view drawing depicting the relevant monuments and reference ties which is sufficient in detail to enable accurate relocation of the corner monument if the corner monument is disturbed. Indicate north.



V7

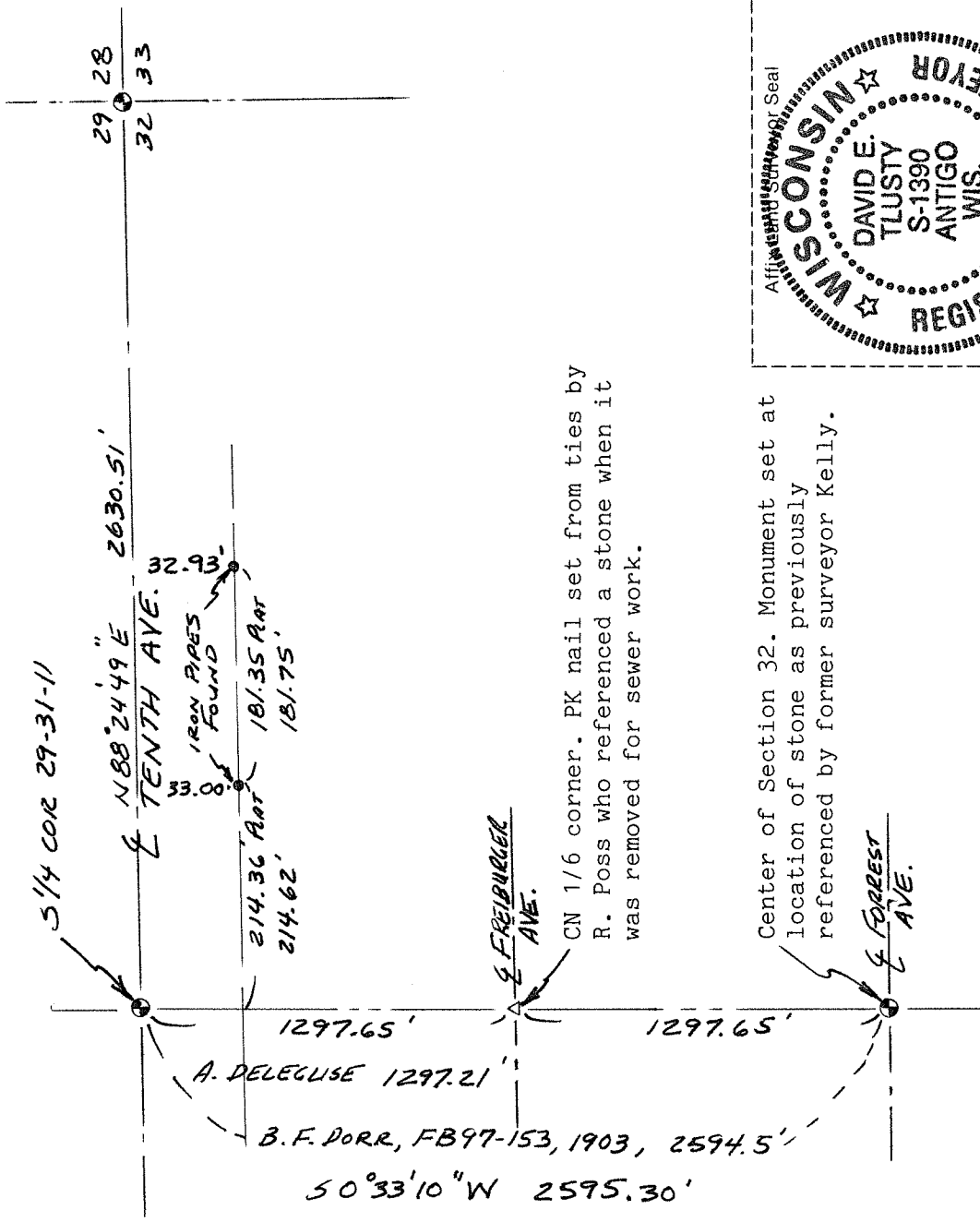
4311290020

Describe any material discrepancy between the location of the corner as restored or reestablished and the location of that corner as previously restored or reestablished by distance and direction. Show the discrepancy on the plan view drawing under (d), above. Show the distances between the corner as previously restored or reestablished and (1) the corner as restored or reestablished, and (2) to at least 2 of the witness monuments shown on the drawing in (d), above.

No discrepancy.

(f) Was the corner restored through acceptance of (1) an obliterated evidence location, or, (2) a found perpetuated location. ?
Corner was re-set as described on the front of this form.

(g & h) Was the corner reestablished through lost corner proportionate methods? If so, show the method, including the directions and distances to other public land survey corners used as evidence or used for proportioning in determining the corner location.
No.



(i) I, David E. Tlusty, Langlade County Surveyor,
(type or print name)

certify that the corner location shown on this record was determined by me or under my direction and control and that this U.S. Public Land Survey Monument Record is correct and complete to the best of my knowledge and belief.

David E. Tlusty July 6, 1994
Signature Date