

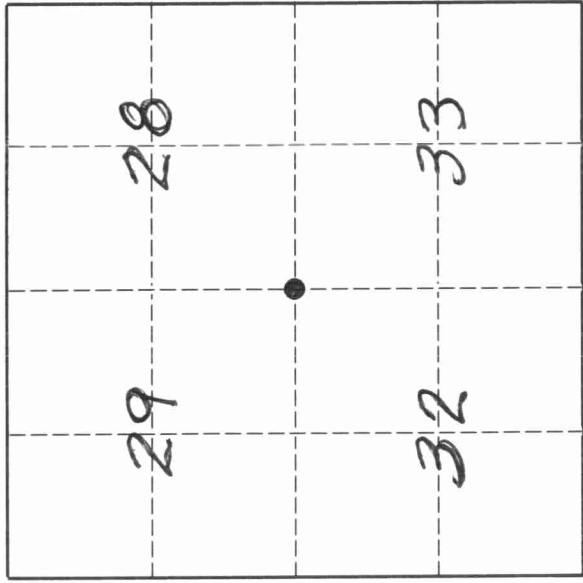
43111290000

U. S. PUBLIC LAND SURVEY MONUMENT RECORD

INSTRUCTIONS:

- (a) Identify the corner by reference to the U.S. public land survey system.
    - = Corner monument restored.
- The Southwest corner of Section 28, Township 31 North, Range 11 East, Langlade County, Wisconsin.

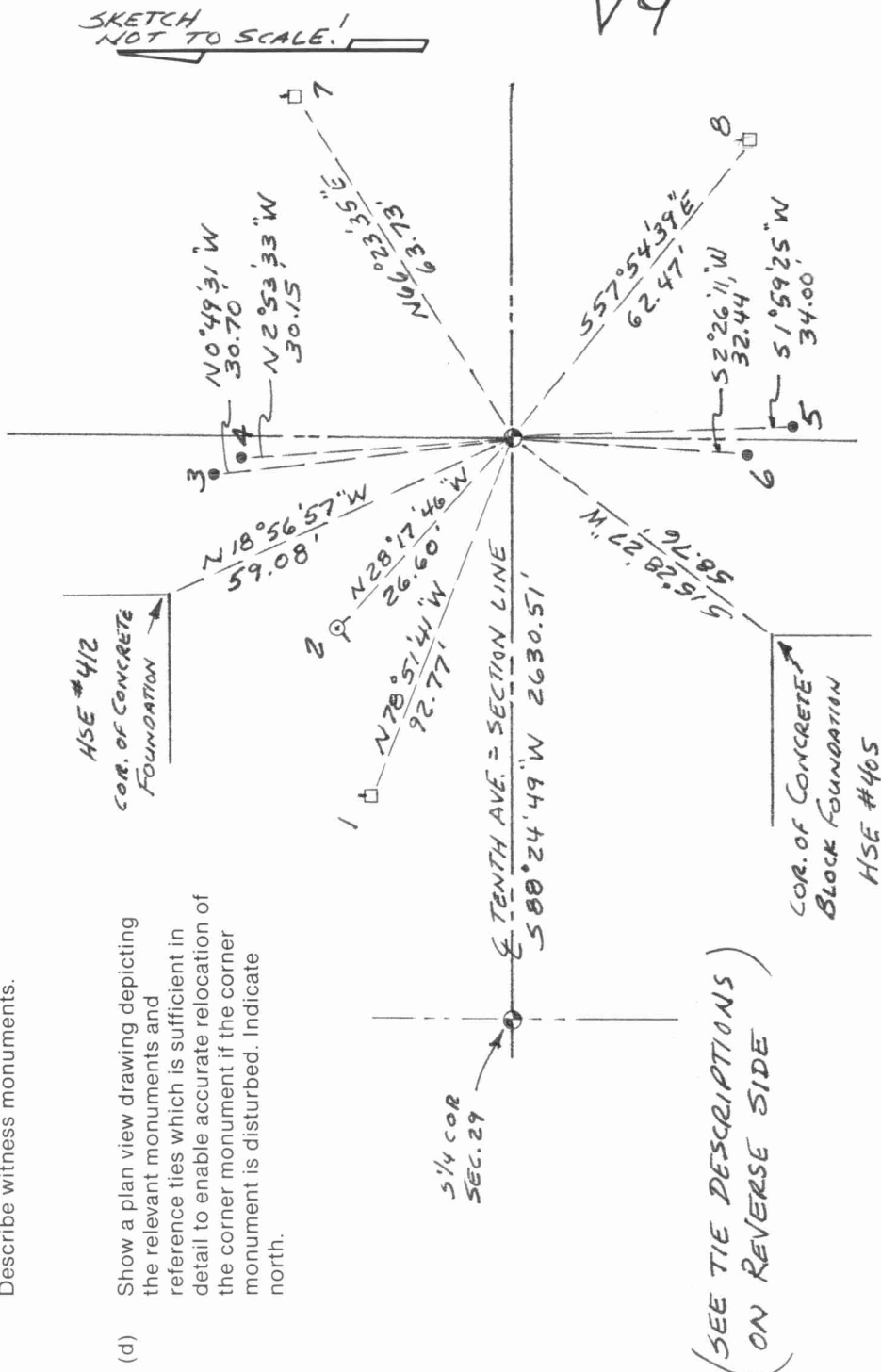
This record shall show the location of the corner and shall include all of the following nine elements (a through i).



T. 31 N., R. 11 E.

- (b) Describe any record evidence, monument evidence, occupational evidence, testimonial evidence or any other material evidence you considered, and whether the monument was found or placed.
 

The original corner was established in 1860 by Hiram C. Fellows. Original BT's: cherry, 8", N20°E, 25 lks., elm, 14", S44°W, 8 lks. 10/12/1878, F.A. Deleglise found the original corner post and replaced it with a new one. In 1912, Alex Deliglise shows this corner to be a "stake" on plat of Berner & Gruber Addition. 5/07/90, former surveyor Kelly found a 3/4" iron rod for the corner. Several surveys of record, completed in the past 20 years, make reference to this corner. Berner & Grubers Addition shows the distance from this corner to an iron pin south (1/16 corner) as 1333.87'. Tom Arnott, on CSM5-204, shows the distance on the same line as 1333.96'. 6/10/92, I found 3/4" iron rod in place as shown on Kellys corner form, and accept it as the best evidence of the original corner location. The landowner to the SW said this marker has been in place for as long as he can remember (cont)
- (c) In the plan view drawing below, provide reference ties to at least 4 witness monuments, or, if the location is within a municipality, to at least 2 witness monuments. (Witness monuments shall be made of concrete, natural stone, iron or other equally durable material.) Describe witness monuments.



4311290000

Describe any material discrepancy between the location of the corner as restored or reestablished and the location of that corner as previously restored or reestablished by distance and direction. Show the discrepancy on the plan view drawing under (d), above. Show the distances between the corner as previously restored or reestablished and (1) the corner as restored or reestablished, and (2) to at least 2 of the witness monuments shown on the drawing in (d), above.

(f) Was the corner restored through acceptance of (1) an obliterated evidence location, or, (2) a found perpetuated location?

(g & h) Was the corner reestablished through lost corner proportionate methods? If so, show the method, including the directions and distances to other public land survey corners used as evidence or used for proportioning in determining the corner location.

(cont. from front)  
and he has owned the property since 1967. I removed the iron rod to find that it is a very old, perforated pipe, with a solid top and a pointed bottom. From the amount of rust and corrosion on the pipe, it has been here for a very long time. I re-set it so the top is 18" below the new road surface. I also set a 1 $\frac{1}{4}$ " x 18" iron pipe with a 4" dia. brass cap, top of which is just below the new road surface.

DESCRIPTION OF TIES

1. PK nail & washer set in SW side of power pole
2. Center of top of new hydrant (installed 1993)
3. 3/4" iron rod found
4. Very old 1 $\frac{1}{4}$ " iron pipe found
5. Aluminum pipe witness monument with 3 $\frac{1}{4}$ " aluminum cap found
6. Axle found
7. PK nail & washer set in SE side of power pole
8. PK nail & washer set in SW side of power pole



(i) I, David E. Tlusty, Langlade County Surveyor  
(type or print name)

certify that the corner location shown on this record was determined by me or under my direction and control and that this U.S. Public Land Survey Monument Record is correct and complete to the best of my knowledge and belief.

David E. Tlusty July 5, 1994  
Signature Date