

U.S. PUBLIC LAND SURVEY MONUMENT RECORD

(Prepared and as required by S. A-E 7.08 WI Administrative Code)

The CENTER 1/4 corner of Section 28, T. 31 N., R. 11 E., Langlade County, WI
 Corner was (check all that apply)

- Restored through acceptance of an obliterated evidence location.
- Restored through acceptance of a found perpetuated location.
- Determined to be lost and re-established through proportionate methods. (show bearings and distances to PLSS corners used for proportioning.)
- Restored/recovered/re-established in a location that differs from a previously established position. (Show difference in plan view below.)
- Check here if additional information is shown on the reverse side of this form.

Describe record evidence, recovered physical evidence, occupational evidence, testimonial evidence, and all other evidence considered in the recovery/restoration of the corner.

Corner not set as part of original survey.

1979 - Daniel Pleoeger found 1.5" iron rod 16" below top of pavement. Pleoeger set a railroad spike over iron rod at corner. Pleoeger made ties and filed a tie sheet.

2023 - I found railroad spike 2" below the road surface set by Pleoeger. Location matches ties and previous survey work in the area.

Physical description of the monument set:

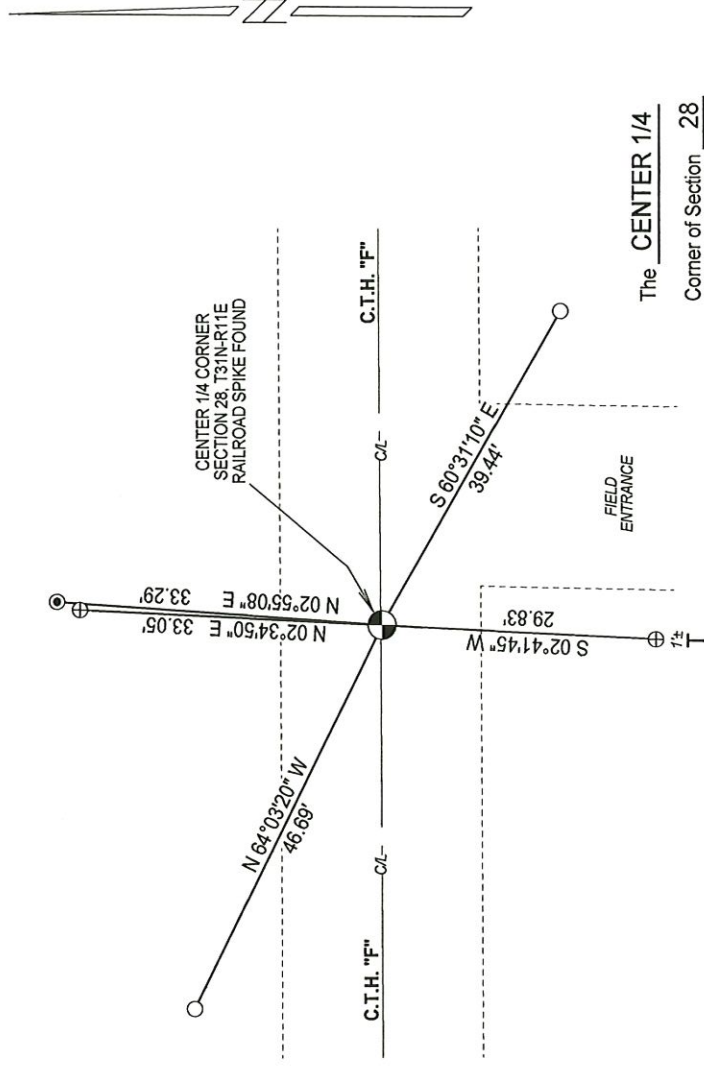
Accepted railroad spike as corner location and tied out as shown below.

Describe the accessories used to perpetuate the location of the corner. Include a plan view drawing and indicate accessories found/set. Describe measuring point on bearing trees. Show any topographic features that would aid in future recovery of the corner.

CENTER 1/4 CORNER
 SECTION 28, T31N-R11E
 RAILROAD SPIKE FOUND
 N: 340311.54
 E: 627295.31
 LANGLADE COUNTY COORDINATES
 NAD 83 (2011)
 OBSERVED 06-09-2023
 RTK GPS

LEGEND

- RAILROAD SPIKE FOUND
- SET 3/4" X 30" REBAR
- FOUND 1" IRON PIPE
- FOUND BRASS CAPPED MONUMENT
- WHITE VINYL T-POST WITH SURVEY MARKER SIGN SET



The CENTER 1/4
 Corner of Section 28
 T. 31 N., R. 11 E.
 Langlade County, WI

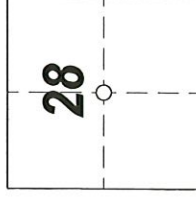
SURVEYORS SEAL



NOTES
 - SKETCH NOT DRAWN TO SCALE.
 - TIE BEARINGS SHOWN ARE LANGLADE COUNTY GRID BEARINGS.
 - ALL TIES MEASURED ELECTRONICALLY WITH TOTAL STATION.

I, Michael J. Hoffmann certify that the corner location shown on this record was determined by me or under my direction and control and that this U.S. Public Land Survey Monument Record is correct and complete to the best of my knowledge and belief.

Michael J. Hoffmann 09-27-2023
 Signature Date



○ = Location of corner

CERTIFIED LAND CORNER RESTORATION

Index No. T-11

State of Wisconsin }
 County of Lanlade } ss.

History of original corner establishment:

I Daniel K. Plegger, do hereby certify that on the 19th day of September, 1979, I found evidence of the Center corner of Section 28, Township 31, North, Range 11 East, Fourth Principal Meridian, as described hereon; and that from this evidence I established a new monument and accessories as described hereon to perpetuate the original location of this corner.

Description of corner evidence found:

Found $1\frac{1}{2}$ " iron rod 16" below top of pavement.

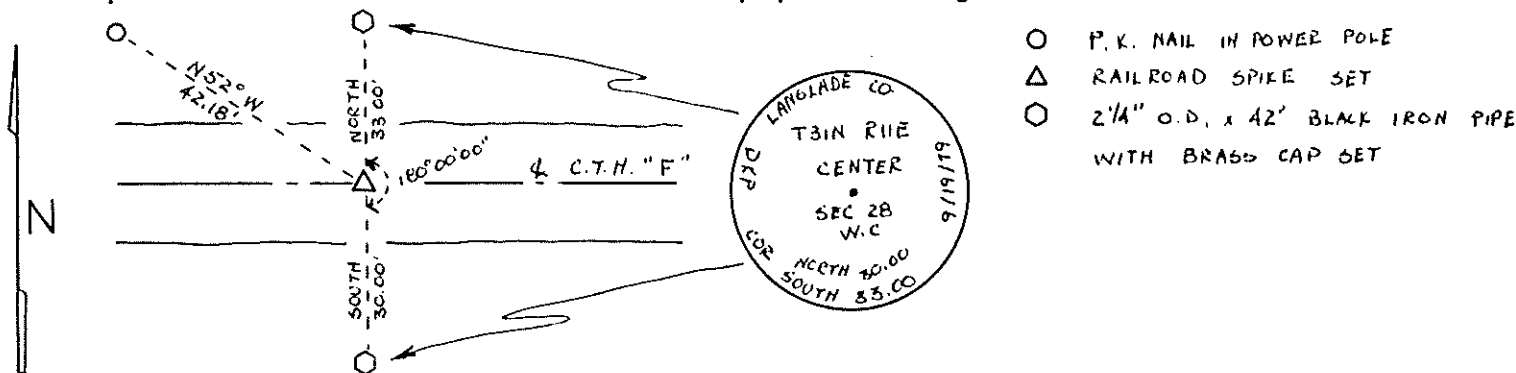
Set railroad spike in pavement over found iron rod.

Resident witnesses:

.....



Description of monument and accessories I established to perpetuate the original location of this corner.



Dated at Antigo, Wis., this 25th day of September, 1979.

Signature Daniel K. Plegger Title Registered Land Surveyor Registration No. 1537
 (County Surveyor, Registered Land Surveyor, or other duly authorized official)

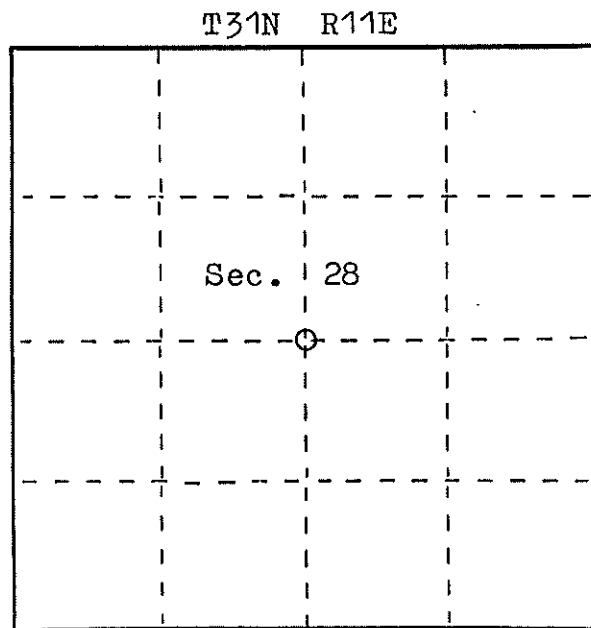
Office of Register of Deeds, County of, I hereby certify that the within instrument was filed in this office for record on the day of, 19..... at o'clock M.

.....
 (Register of Deeds)

By Deputy

FORM 985 W. C. MILLER CO., MILWAUKEE

43/11282030



○ = Corner monument restored.