

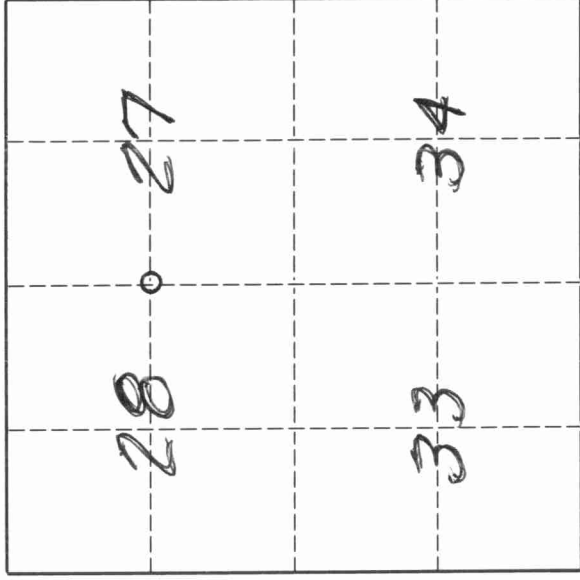
43111982000

U. S. PUBLIC LAND SURVEY MONUMENT RECORD

INSTRUCTIONS:

This record shall show the location of the corner and shall include all of the following nine elements (a through i).

- (a) Identify the corner by reference to the U.S. public land survey system.
- O = Corner monument restored.



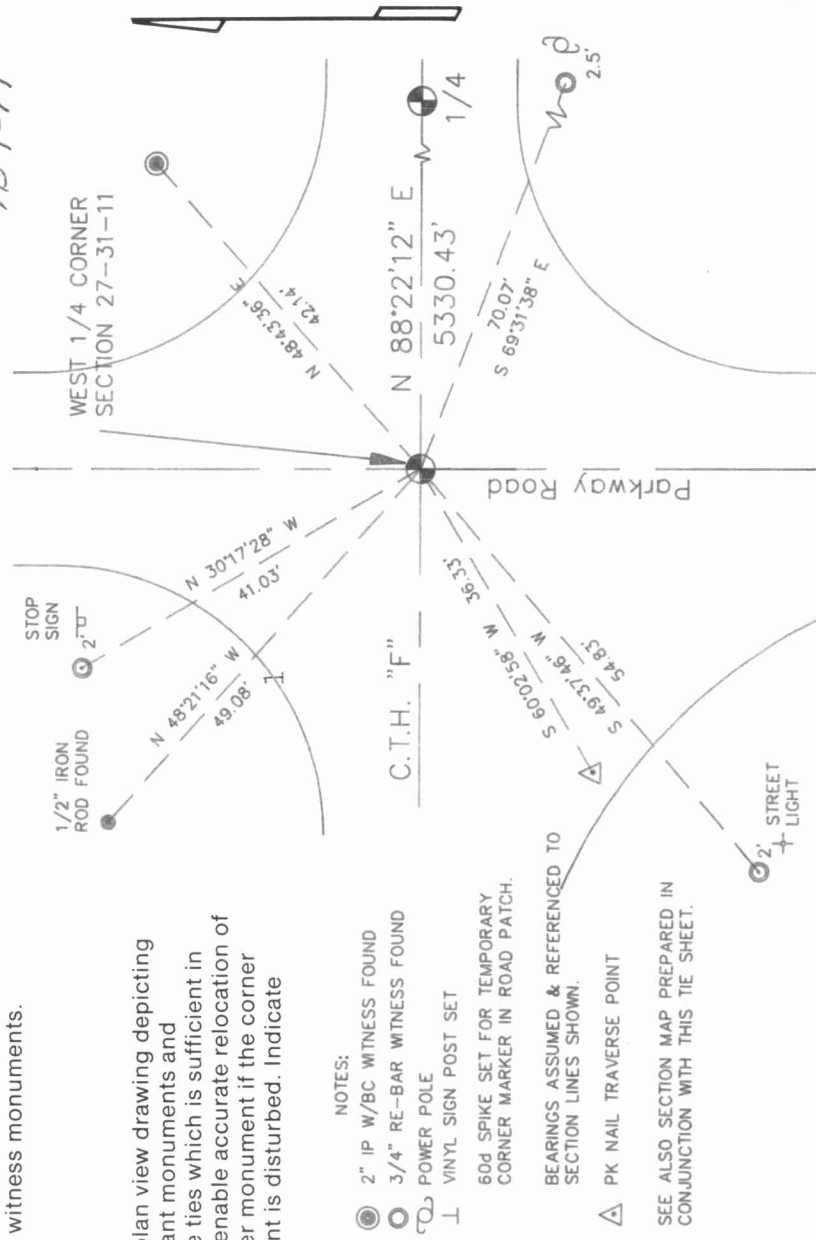
West Quarter corner of
 Section 27,
 Township 31 North,
 Range 11 East,
 Langlade County,
 Wisconsin.

T. 31 N., R. 11 E.

- (b) Describe any record evidence, monument evidence, occupational evidence, testimonial evidence or any other material evidence you considered, and whether the monument was found or placed.

The original corner was established in 1860 by H.C. Fellows. Original BT's: birch, 12", S80°E, 35 lks., birch, 16", N52°W, 4 lks. In 1916, Malcolm Hutchinson "found old stake set cilinder wrench 14" long". In 1978, former surveyor Kelly "located iron pin in road set by Becher-Hoppe on control survey for Langlade County Airport". 1993, Dan Higginbotham found PK nail and retied it - found 1 of Kellys witness monuments and set 3 rebars. 05/01/96 D. Tlusty, Tom Arnott, Mike Kielcheski dug with County backhoe and found wood stake and 14" long wrench. Accepted wood stake as best evidence of the corner. Removed it and replaced it with a 1 1/2" x 36" iron pipe with 4" brass cap, top of which is 15" below road surface.

- (c) In the plan view drawing below, provide reference ties to at least 4 witness monuments, or, if the location is within a municipality, to at least 2 witness monuments. (Witness monuments shall be made of concrete, natural stone, iron or other equally durable material.) Describe witness monuments.



- (d) Show a plan view drawing depicting the relevant monuments and reference ties which is sufficient in detail to enable accurate relocation of the corner monument if the corner monument is disturbed. Indicate north.

- NOTES:
- 2" IP W/BC WITNESS FOUND
 - 3/4" RE-BAR WITNESS FOUND
 - ⊙ POWER POLE
 - ⌄ VINYL SIGN POST SET
 - 60d SPIKE SET FOR TEMPORARY CORNER MARKER IN ROAD PATCH.
 - BEARINGS ASSUMED & REFERENCED TO SECTION LINES SHOWN.
 - △ PK NAIL TRAVERSE POINT

SEE ALSO SECTION MAP PREPARED IN CONJUNCTION WITH THIS TIE SHEET.

T13

43111282000

Describe any material discrepancy between the location of the corner as restored or reestablished and the location of that corner as previously restored or reestablished by distance and direction. Show the discrepancy on the plan view drawing under (d), above. Show the distances between the corner as previously restored or reestablished and (1) the corner as restored or reestablished, and (2) to at least 2 of the witness monuments shown on the drawing in (d), above.

The Becher-Hoppe/Kelly corner is N 65° 27' W, 0.5' from the corner found.

- (f) Was the corner restored through acceptance of (1) an obliterated evidence location, or, (2) a found perpetuated location.?
(2) a found perpetuated location

- (g & h) Was the corner reestablished through lost corner proportionate methods? If so, show the method, including the directions and distances to other public land survey corners used as evidence or used for proportioning in determining the corner location.

No.

- (i) I, David E. Tlusty, Langlade County Surveyor
(type or print name)

certify that the corner location shown on this record was determined by me or under my direction and control and that this U.S. Public Land Survey Monument Record is correct and complete to the best of my knowledge and belief.

David E. Tlusty Signature
June 4, 1996 Date

