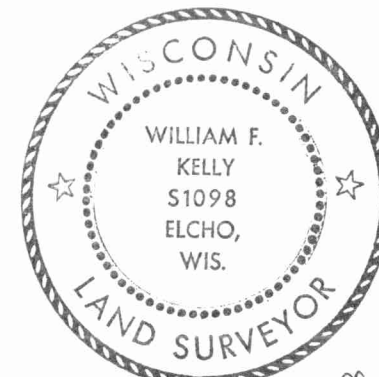


CERTIFIED LAND CORNER RESTORATION

Index No. T-13

State of Wisconsin }
County of LANGLADE } ss.

History of original corner establishment:



William F. Kelly

I WILLIAM F. KELLY, do hereby certify that on the 12th day of July, 1978, I found evidence of the West 1/4 corner of SECTION 27 Township 31, North, Range 11E, Fourth Principal Meridian, as described hereon; and that from this evidence I established a new monument and accessories as described hereon to perpetuate the original location of this corner.

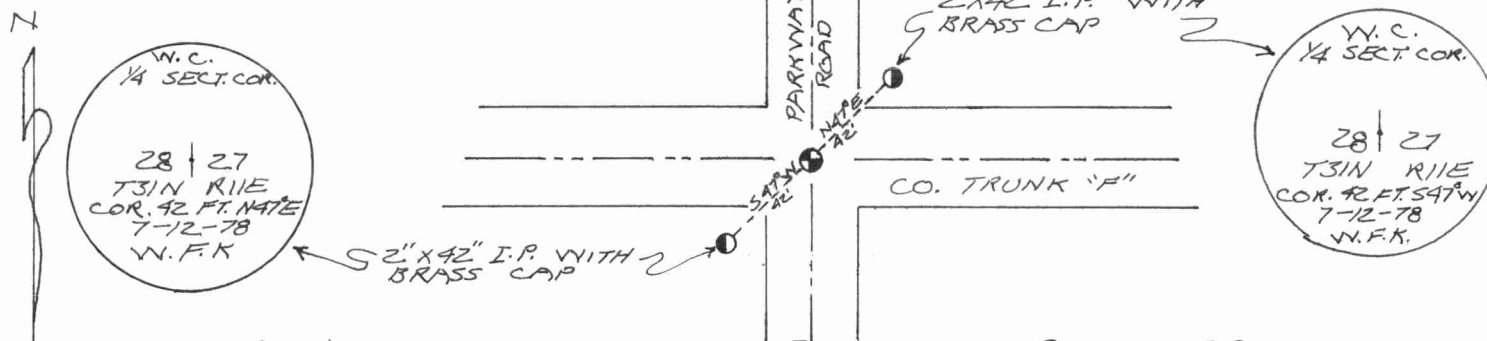
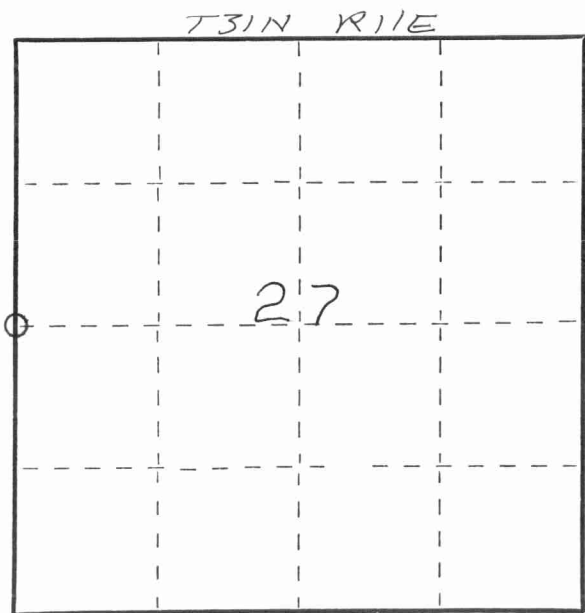
Description of corner evidence found:
LOCATED IRON PIN IN ROAD, SET BY BECHER-HOPPE ON CONTROL SURVEY FOR LANGLADE COUNTY AIRPORT.

Resident witnesses:

SET TWO WITNESS CORNERS, EACH 2"X42" I.P. WITH BRASS CAPS.

Description of monument and accessories I established to perpetuate the original location of this corner.

FORM 985 M. C. MILLER CO., MILWAUKEE



Dated at ELCHO, Wis., this 13 day of DECEMBER, 1978.

Signature William F. Kelly Title COUNTY SURVEYOR Registration No. S-1098
(County Surveyor, Registered Land Surveyor, or other duly authorized official)

Office of Register of Deeds, County of _____, I hereby certify that the within instrument was filed in this office for record on the _____ day of _____, 19____ at _____ o'clock _____ M.

(Register of Deeds)

By _____ Deputy

○ = Corner monument restored.

4311282000

