

CERTIFIED LAND CORNER RESTORATION

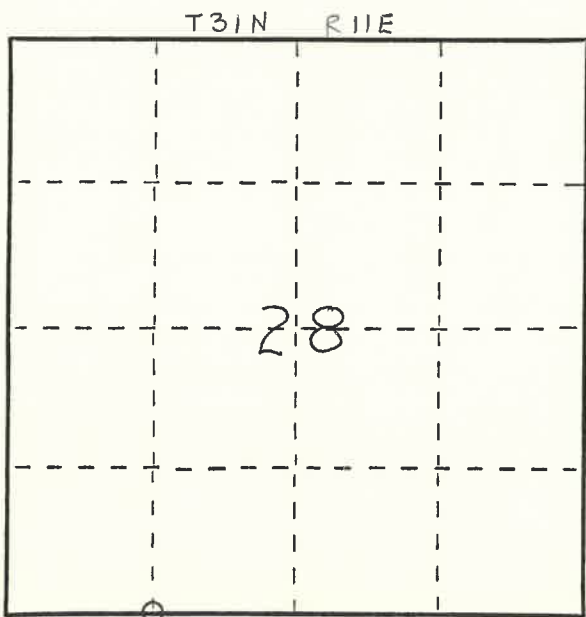
Index No. V-10

State of Wisconsin }
 County of LANGLADE } ss.

I WESLEY J. TRADEWELL, do hereby certify that on the 14TH day of JUNE, 1979, I found evidence of the SOUTHEAST corner of S.W. 1/4, S.W. 1/4, SECTION 28, Township 31, North, Range 11 EAST, Fourth Principal Meridian, as described hereon; and that from this evidence I established a new monument and accessories as described hereon to perpetuate the original location of this corner.

Resident witnesses:

.....



○ = Corner monument restored.

History of original corner establishment:

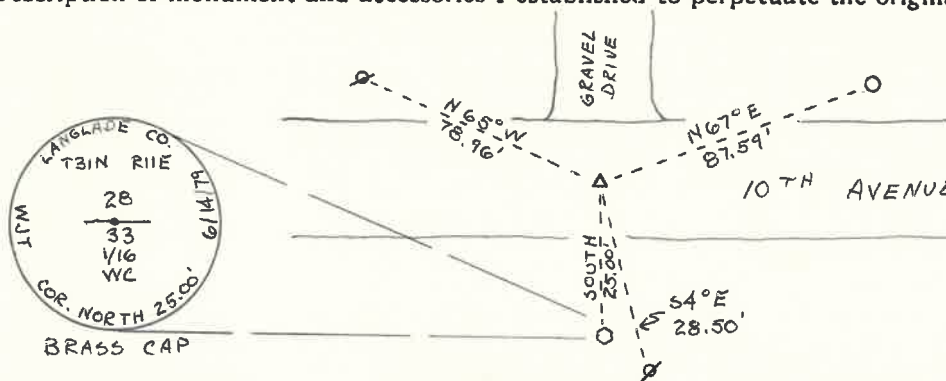
CORNER REESTABLISHED BY LANGLADE DEVELOPMENT.

Description of corner evidence found:

FOUND RAILROAD SPIKE SET BY LANGLADE DEVELOPMENT.



Description of monument and accessories I established to perpetuate the original location of this corner.



- - 1 7/8" O.D. x 42" BLACK IRON PIPE w/ BRASS CAP SET
- △ - R.R. SPIKE FOUND
- ⊗ - P.K. NAIL IN POWER POLE
- - 1/2" O.D. IRON PIPE FOUND (SW COR. OF LOT 21 OF EVERGREEN HEIGHTS)

Dated at ANTIGO, Wis., this 19TH day of JUNE, 1979.

Signature Wesley J. Tradewell Title REGISTERED LAND SURVEYOR Registration No. 1342
 (County Surveyor, Registered Land Surveyor, or other duly authorized official)

Office of Register of Deeds, County of....., I hereby certify that the within instrument was filed in this office for record on the.....day of....., 19..... at.....o'clock..... M.

.....
 (Register of Deeds)

By.....Deputy

FORM 985 M. C. MILLER CO., MILWAUKEE

4311280030