

U.S. PUBLIC LAND SURVEY MONUMENT RECORD

(Prepared and as required by S. A-E 7.08 WI Administrative Code)

The SOUTH 1/4 corner of Section 28, T. 31 N., R. 11 E., Langlade County, WI
Corner was (check all that apply)

- Restored through acceptance of an obliterated evidence location.
- Restored through acceptance of a found perpetuated location.
- Determined to be lost and re-established through proportionate methods. (show bearings and distances to PLSS corners used for proportioning.)
- Restored/recovered/re-established in a location that differs from a previously established position. (Show difference in plan view below.)
- Check here if additional information is shown on the reverse side of this form.

Describe record evidence, recovered physical evidence, occupational evidence, testimonial evidence, and all other evidence considered in the recovery/restoration of the corner.

1860 - Original corner established by H.C. Fellows - bearing trees: Birch, 8", S58°E, 40 links; Birch, 20", N44°W, 41 links.

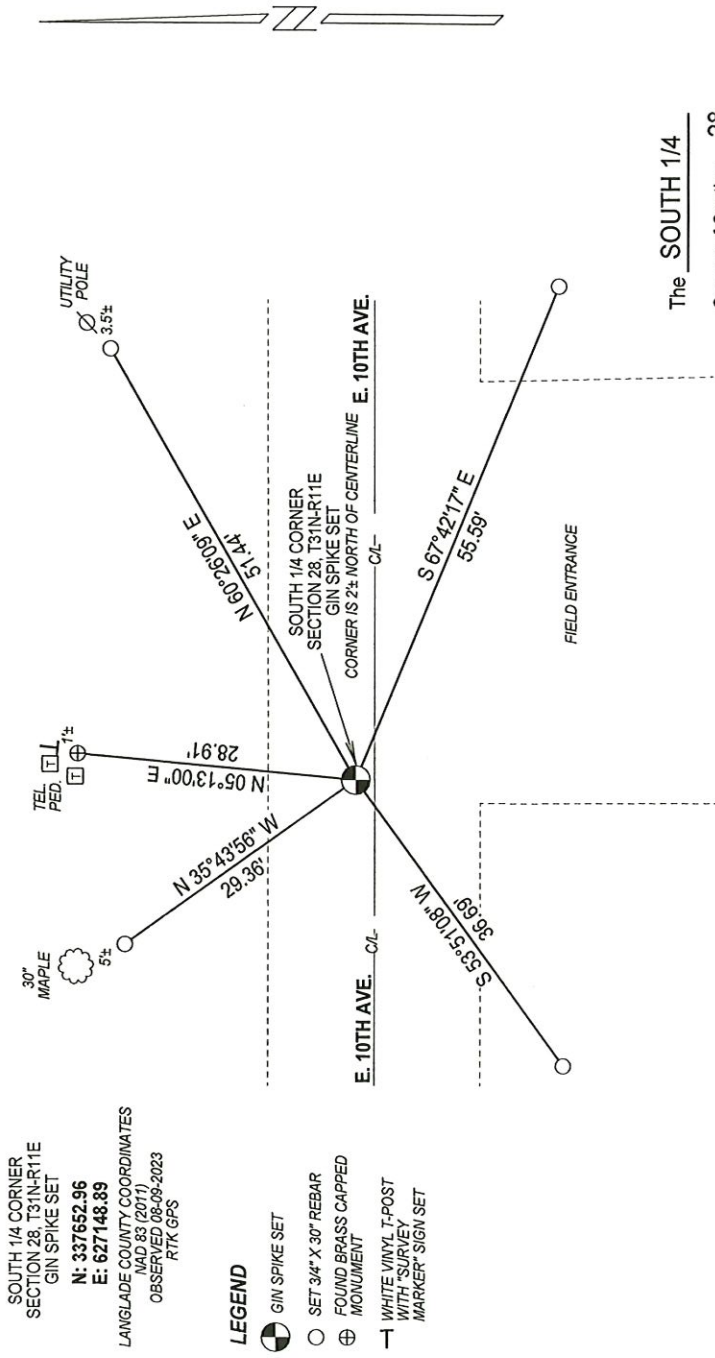
1970 - Wesley Tradewell found railroad spike set by Langlade Development. Tradewell made ties and filed a tie sheet.

2023 - Railroad spike referenced by Tradewell was missing. Probably disturbed from recent road work. I set a gin spike at coordinates previously established on the railroad spike. Location matches existing ties and previous survey work in the area.

Physical description of the monument set:

Set gin spike at corner location, tied out as shown below.

Describe the accessories used to perpetuate the location of the corner. Include a plan view drawing and indicate accessories found/set. Describe measuring point on bearing trees. Show any topographic features that would aid in future recovery of the corner.



NOTES
- SKETCH NOT DRAWN TO SCALE
- TIE BEARINGS SHOWN ARE LANGLADE COUNTY GRID BEARINGS.
- ALL TIES MEASURED ELECTRONICALLY WITH TOTAL STATION.

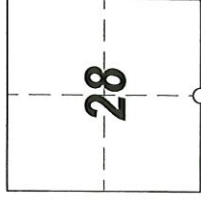
SURVEYORS SEAL



I, Michael J. Hoffman certify that the corner location shown on this record was determined by me or under my direction and control and that this U.S. Public Land Survey Monument Record is correct and complete to the best of my knowledge and belief.

Michael J. Hoffman 09-27-2023 Date
Signature

The SOUTH 1/4
Corner of Section 28
T. 31 N., R. 11 E.
Langlade County, WI



○ = Location of corner

INDEX No. **V-11** 4311128 0020

CERTIFIED LAND CORNER RESTORATION

Index No. V-11

State of Wisconsin }
 County of LANGLADE } ss.

I, WESLEY J. TRADEWELL, do hereby certify that on the 13TH day of JUNE, 1979, I found evidence of the SOUTH 1/4 corner of SECTION 28 Township 31, North, Range 11 EAST, Fourth Principal Meridian, as described hereon; and that from this evidence I established a new monument and accessories as described hereon to perpetuate the original location of this corner.

Resident witnesses:

.....

History of original corner establishment:

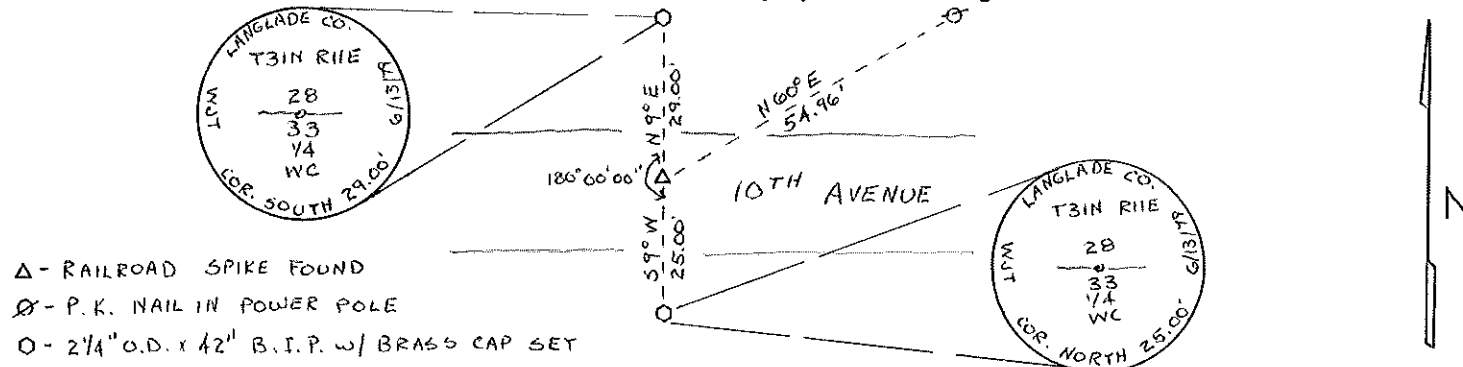
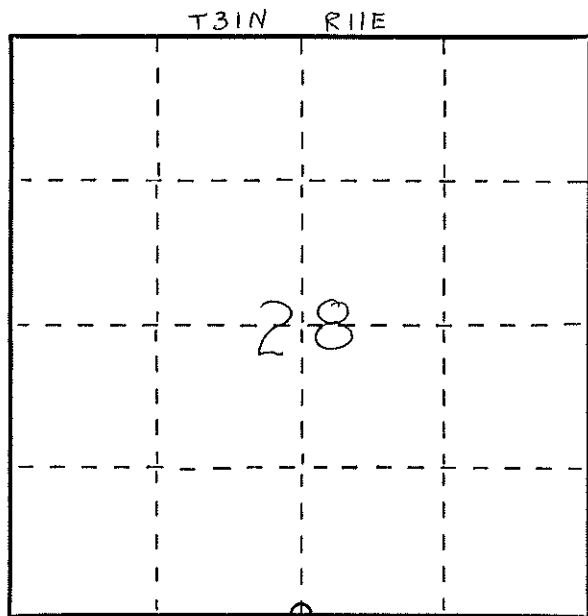
CORNER REESTABLISHED BY LANGLADE DEVELOPMENT.

Description of corner evidence found:

FOUND R.R. SPIKE SET BY LANGLADE DEVELOPMENT.



Description of monument and accessories I established to perpetuate the original location of this corner.



- Δ - RAILROAD SPIKE FOUND
- ⊗ - P.K. NAIL IN POWER POLE
- - 2 1/4" O.D. x 42" B.I.P. w/ BRASS CAP SET

Dated at ANTIGO, Wis., this 19TH day of JUNE, 1979

Signature Wesley J. Tradewell Title REGISTERED LAND SURVEYOR Registration No. 1342
 (County Surveyor, Registered Land Surveyor, or other duly authorized official)

Office of Register of Deeds, County of....., I hereby certify that the within instrument was filed in this office for record on the..... day of....., 19..... at..... o'clock..... M.

.....
 (Register of Deeds)
 By..... Deputy

FORM 985 R. C. MILLER CO., MILWAUKEE 4311280020