

CERTIFIED LAND CORNER RESTORATION

Index No. V-11

State of Wisconsin }  
 County of LANGLADE } ss.

I, WESLEY J. TRADEWELL, do hereby certify that on the 13<sup>TH</sup> day of JUNE, 19 79, I found evidence of the SOUTH 1/4 corner of SECTION 28 Township 31, North, Range 11 EAST, Fourth Principal Meridian, as described hereon; and that from this evidence I established a new monument and accessories as described hereon to perpetuate the original location of this corner.

Resident witnesses:

.....  
 .....  
 .....

History of original corner establishment:

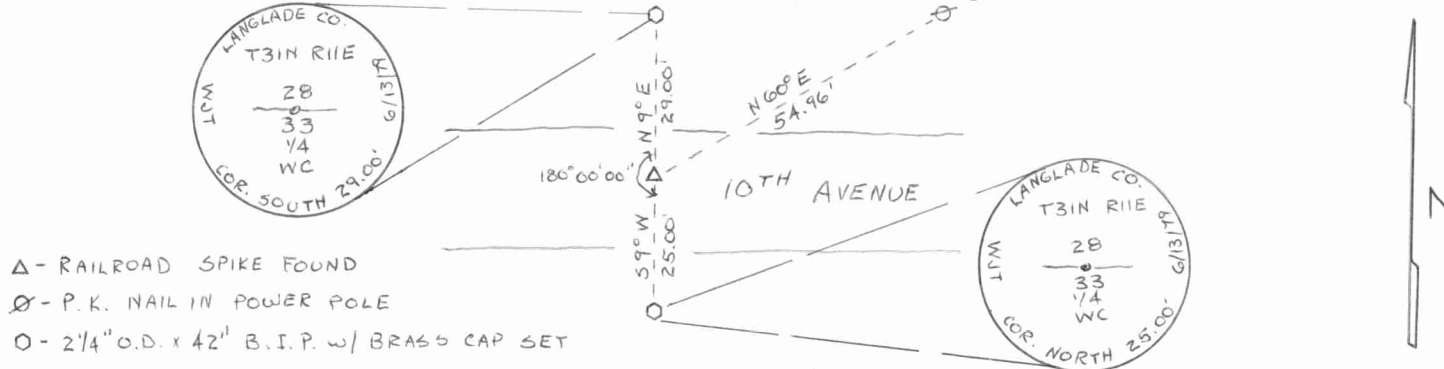
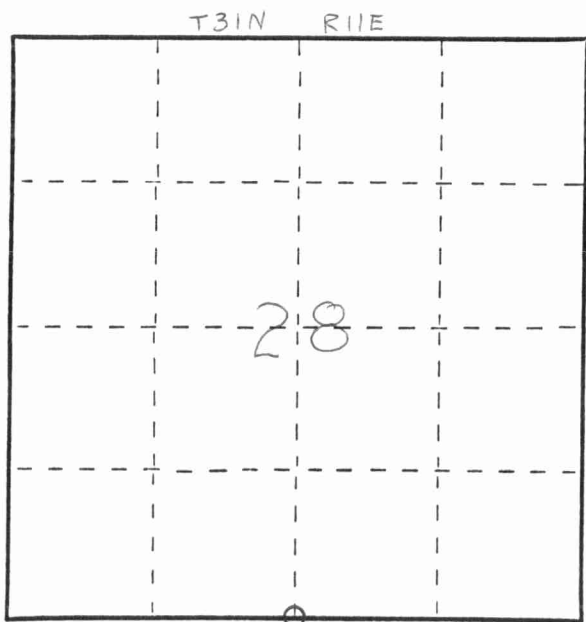
CORNER REESTABLISHED BY LANGLADE DEVELOPMENT.

Description of corner evidence found:

FOUND R.R. SPIKE SET BY LANGLADE DEVELOPMENT.



Description of monument and accessories I established to perpetuate the original location of this corner.



- Δ - RAILROAD SPIKE FOUND
- ⊙ - P.K. NAIL IN POWER POLE
- - 2 1/4" O.D. X 42" B.I.P. w/ BRASS CAP SET

Dated at ANTIGO, Wis., this 19<sup>TH</sup> day of JUNE, 19 79

Signature Wesley J. Tradewell Title REGISTERED LAND SURVEYOR Registration No. 1342  
 (County Surveyor, Registered Land Surveyor, or other duly authorized official)

Office of Register of Deeds, County of ....., I hereby certify that the within instrument was filed in this office for record on the ..... day of ....., 19..... at ..... o'clock ..... M.

.....  
 (Register of Deeds)

By ..... Deputy

○ = Corner monument restored.

FORM 985 M. C. MILLER CO., MILWAUKEE 4311128000

