

431128000

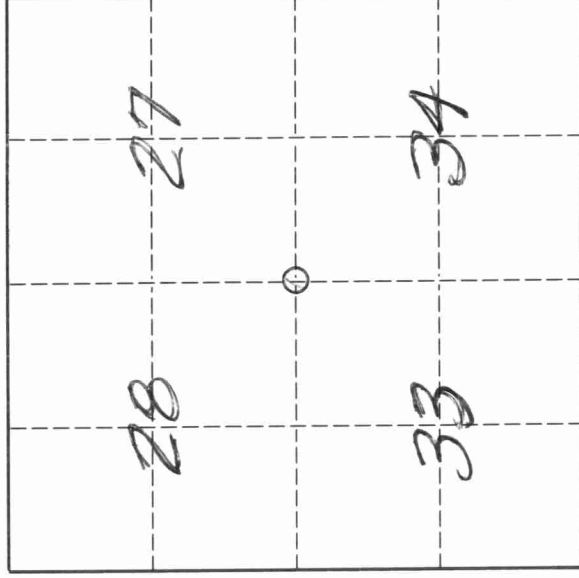
U. S. PUBLIC LAND SURVEY MONUMENT RECORD

INSTRUCTIONS:

This record shall show the location of the corner and shall include all of the following nine elements (a through i).

- (a) Identify the corner by reference to the U.S. public land survey system.
- O = Corner monument restored.

Southwest corner of Section 27, Township 31 North, Range 11 East, Langlade County, Wisconsin.



T. 31 N., R. 11 E.

- (b) Describe any record evidence, monument evidence, occupational evidence, testimonial evidence or any other material evidence you considered, and whether the monument was found or placed.

The original corner was established in 1860 by Hiram C. Fellows.

Original BT's: birch, 12", N64°E, 5 lks., sugar, 12", S50°W, 27 lks.

In 1916, Malcolm Hutchinson "found old stake iron pipe 1 foot long

with stone on top +". In 1993, Dan Higginbotham found "nail with

washer previously set by William Kelly". 05/01/96, D. Tlusty, Tom

Arnott, Mike Keilcheski dug with County backhoe. Dug hole 7' N-S x 12'

E-W and well into original ground. Found nothing. After rough

measuring to apparent property lines in all directions and after

comparing Hutchinsons dimensions to measured distances to the North and

East, I accept the corner as found and perpetuated by D. Higginbotham

as the best evidence of the corner and remeasured witness monuments as

shown below.

(c) In the plan view drawing below, provide reference ties to at least 4 witness monuments, or, if the location is within a municipality, to at least 2 witness monuments. (Witness monuments shall be made of concrete, natural stone, iron or other equally durable material.)

Describe witness monuments.

= existing 3/4" re-bar found

= white vinyl sign post set within 0.5' of witness

- (d) Show a plan view drawing depicting

the relevant monuments and

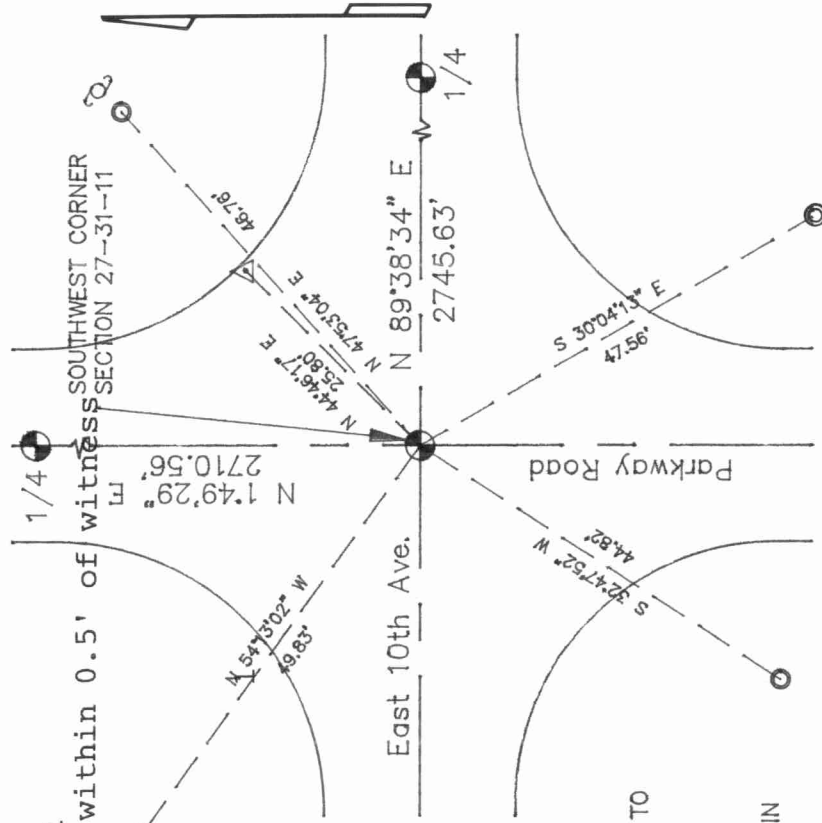
reference ties which is sufficient in

detail to enable accurate relocation of

the corner monument if the corner

monument is disturbed. Indicate

north.



NOTES:

- 3/4" RE-BAR WITNESS FOUND
 - 60d SPIKE SET FOR TEMPORARY CORNER MARKER IN ROAD PATCH.
 - BEARINGS ASSUMED & REFERENCED TO SECTION LINES SHOWN.
 - △ PK NAIL TRAVERSE POINT
- SEE ALSO SECTION MAP PREPARED IN CONJUNCTION WITH THIS TIE SHEET.

V13

431178000

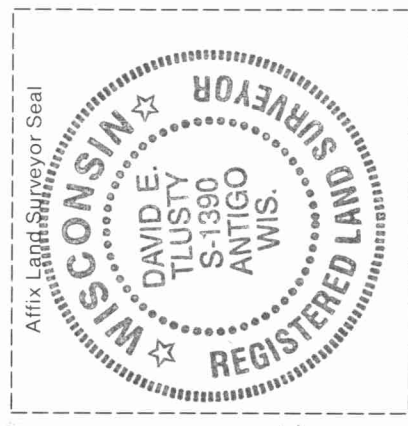
Describe any material discrepancy between the location of the corner as restored or reestablished and the location of that corner as previously restored or reestablished by distance and direction. Show the discrepancy on the plan view drawing under (d), above. Show the distances between the corner as previously restored or reestablished and (1) the corner as restored or reestablished, and (2) to at least 2 of the witness monuments shown on the drawing in (d), above.

No DISCREPANCY

(f) Was the corner restored through acceptance of (1) an obliterated evidence location, or, (2) a found perpetuated location. ?
(2)

(g & h) Was the corner reestablished through lost corner proportionate methods? If so, show the method, including the directions and distances to other public land survey corners used as evidence or used for proportioning in determining the corner location.

-No-



(i) *DAVID E. TLUSTY LANDLORD CO. SURVEYOR*
(type or print name)

certify that the corner location shown on this record was determined by me or under my direction and control and that this U.S. Public Land Survey Monument Record is correct and complete to the best of my knowledge and belief.

David E. Tlusty
Signature

6/3/96
Date