

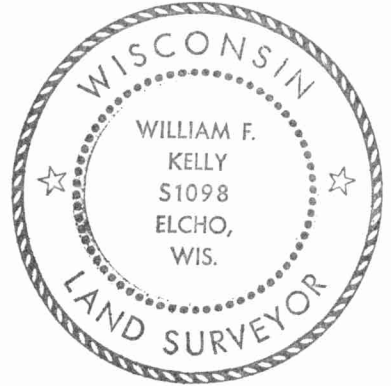
CERTIFIED LAND CORNER RESTORATION

Index No. T-15

State of Wisconsin }  
 County of LANGLADE } ss.

History of original corner establishment:

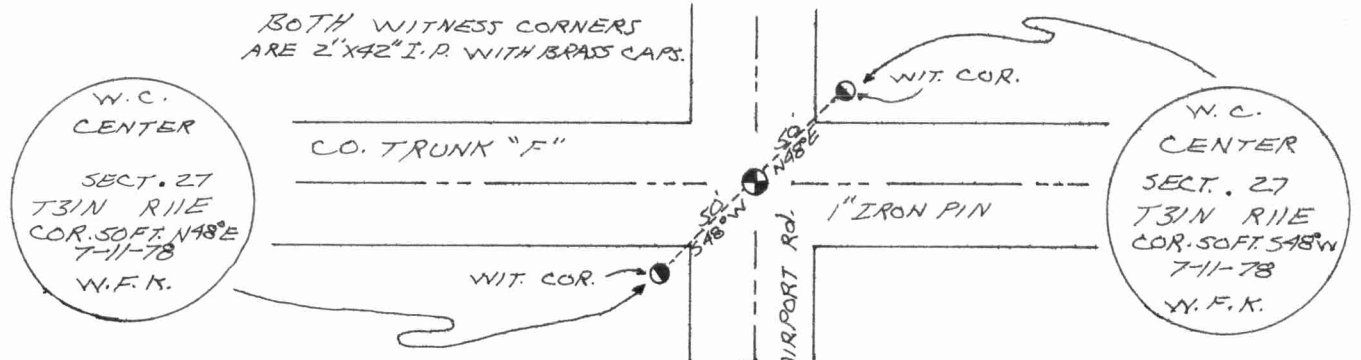
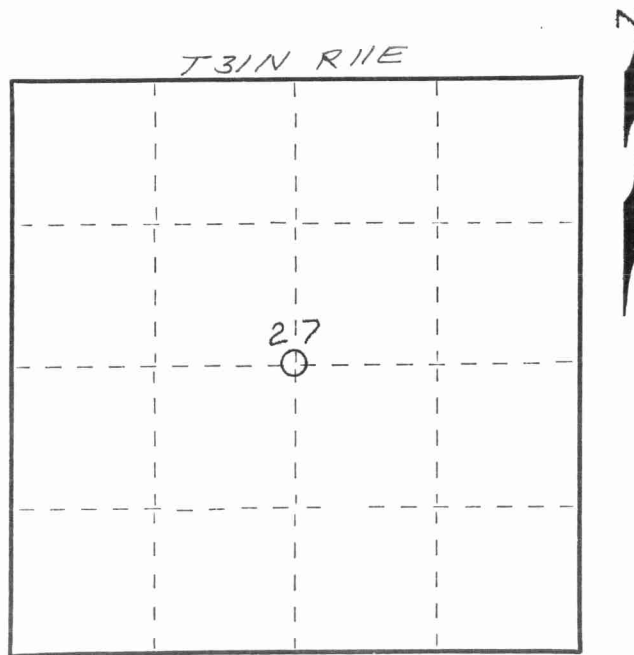
I WILLIAM F. KELLY, do hereby certify that on the 11<sup>TH</sup> day of JULY, 1978, I found evidence of the CENTER 1/4 corner of SECTION 27 Township 31, North, Range 11E, Fourth Principal Meridian, as described hereon; and that from this evidence I established a new monument and accessories as described hereon to perpetuate the original location of this corner.



Description of corner evidence found:  
FOUND 1" IRON PIN SET BY BECHER-HOPPS FOR CONTROL SURVEY ON AIRPORT PROPERTY.

Resident witnesses:  
 \_\_\_\_\_  
 \_\_\_\_\_  
 \_\_\_\_\_

Description of monument and accessories I established to perpetuate the original location of this corner.



Dated at ELCHO, Wis., this 16<sup>TH</sup> day of SEPT., 1978.

Signature William F. Kelly Title County Surveyor Registration No. 5-1098  
 (County Surveyor, Registered Land Surveyor, or other duly authorized official)

Office of Register of Deeds, County of \_\_\_\_\_, I hereby certify that the within instrument was filed in this office for record on the \_\_\_\_\_ day of \_\_\_\_\_, 19\_\_\_\_ at \_\_\_\_\_ o'clock \_\_\_\_\_ M.

\_\_\_\_\_  
 (Register of Deeds)  
 By \_\_\_\_\_ Deputy

FORM 985 H. C. MILLER CO., MILWAUKEE 4311272020

○ = Corner monument restored.

