

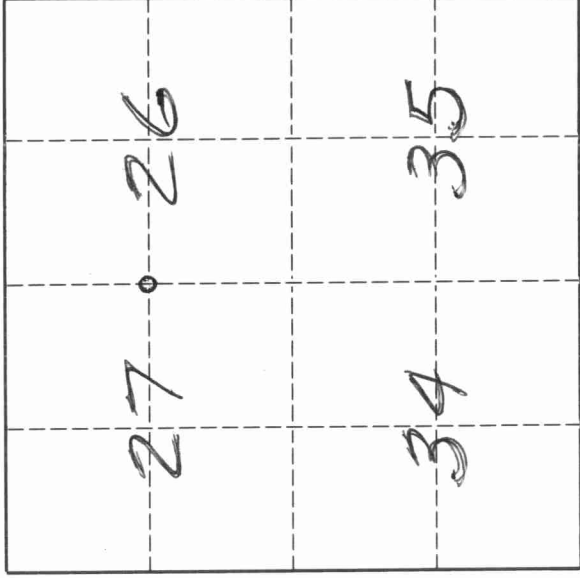
4311273000

# U. S. PUBLIC LAND SURVEY MONUMENT RECORD

## INSTRUCTIONS:

This record shall show the location of the corner and shall include all of the following nine elements (a through i).

- (a) Identify the corner by reference to the U.S. public land survey system.
- O = Corner monument restored.

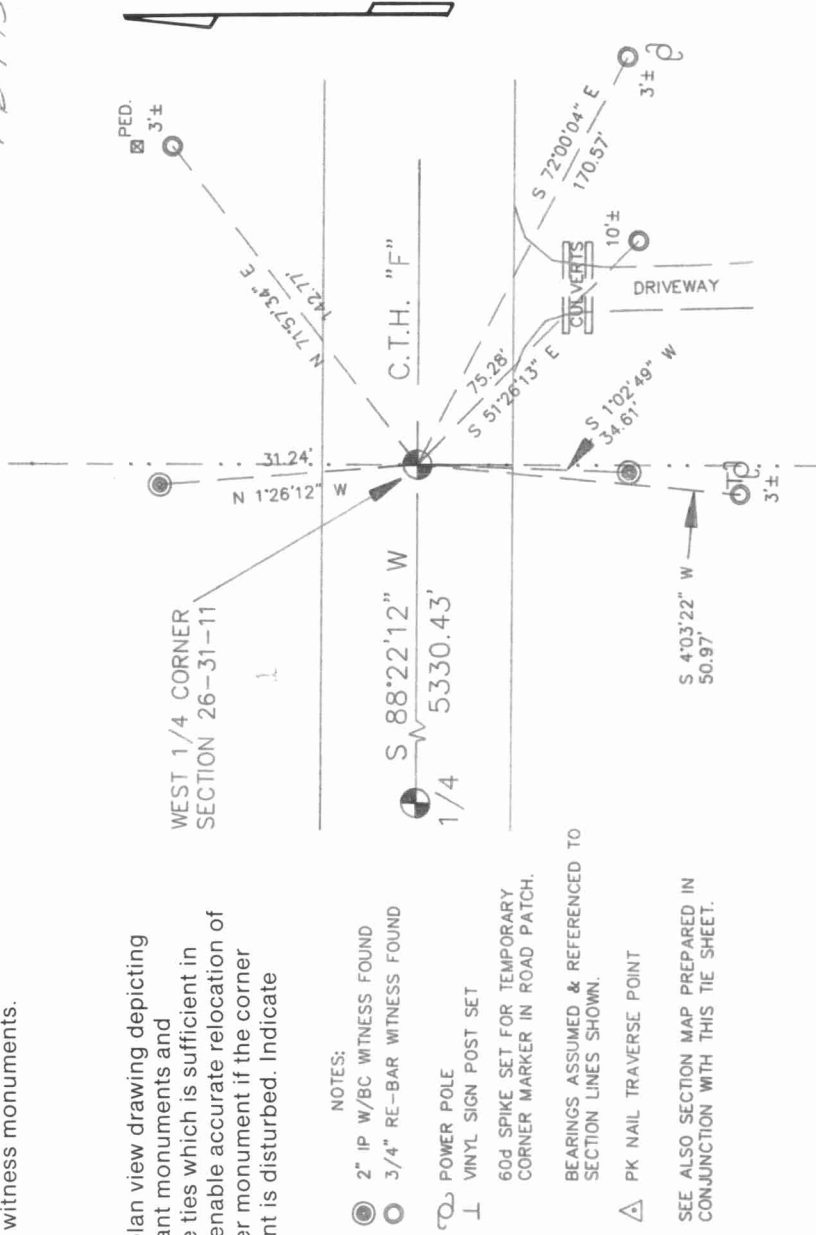


West Quarter corner of Section 26, Township 31 North, Range 11 East, Langlade County, Wisconsin.

T. 31 N., R. 11 E.

- (b) Describe any record evidence, monument evidence, occupational evidence, testimonial evidence or any other material evidence you considered, and whether the monument was found or placed.  
 The original corner was established in 1860 by H.C. Fellows. Original BT's: birch, 6", N55°W, 14 lks., sugar, 10", N65°E, 12 lks. In 1916, Malcolm Hutchinson "found stone with + on top and old stake underneath. Put in large stone 12" x 18" x 20" with + on top". In 1978, former surveyor Kelly "located West 1/4 corner from Becher-Hoppe control survey of airport property. Found 1" iron pin in place". Set 1" IP with brass cap witness mon. 33' N & S. 07/95 Tom Arnott found RR spike under blacktop and two witness monuments. 05/01/96 D. Tlusty, T. Arnott, M. Kielcheski found Hutch's stone, red granite 12" x 18" with clear + on top, 3.5' below road surface. Set 3/4" x 30" rebar on west edge of stone.

- (c) In the plan view drawing below, provide reference ties to at least 4 witness monuments, or, if the location is within a municipality, to at least 2 witness monuments. (Witness monuments shall be made of concrete, natural stone, iron or other equally durable material.)  
 Describe witness monuments. FB 9-15



T17

4311272000

Describe any material discrepancy between the location of the corner as restored or reestablished and the location of that corner as previously restored or reestablished by distance and direction. Show the discrepancy on the plan view drawing under (d), above. Show the distances between the corner as previously restored or reestablished and (1) the corner as restored or reestablished, and (2) to at least 2 of the witness monuments shown on the drawing in (d), above.

The stone found is N 38° 37' E, 2.08' from RR spike.

- (f) Was the corner restored through acceptance of (1) an obliterated evidence location, or, (2) a found perpetuated location.?  
A found perpetuated location.

- (g & h) Was the corner reestablished through lost corner proportionate methods? If so, show the method, including the directions and distances to other public land survey corners used as evidence or used for proportioning in determining the corner location.

No.

(i) I, David E. Tlusty, Langlade County Surveyor  
(type or print name)

certify that the corner location shown on this record was determined by me or under my direction and control and that this U.S. Public Land Survey Monument Record is correct and complete to the best of my knowledge and belief.

  
Signature

Date

6/5/96

