

CERTIFIED LAND CORNER RESTORATION

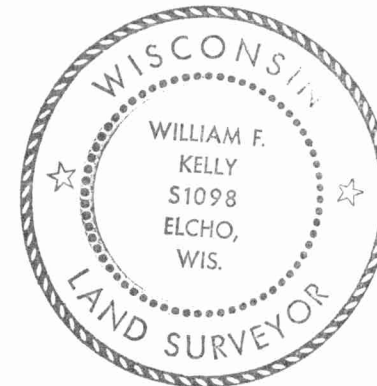
Index No. T-17

State of Wisconsin }
County of LANGLADE } ss.

History of original corner establishment:

I WILLIAM F. KELLY, do hereby certify that on the 11th day of July, 1978, I found evidence of the WEST 1/4 corner of SECTION 26 Township 31, North, Range 11E, Fourth Principal Meridian, as described hereon; and that from this evidence I established a new monument and accessories as described hereon to perpetuate the original location of this corner.

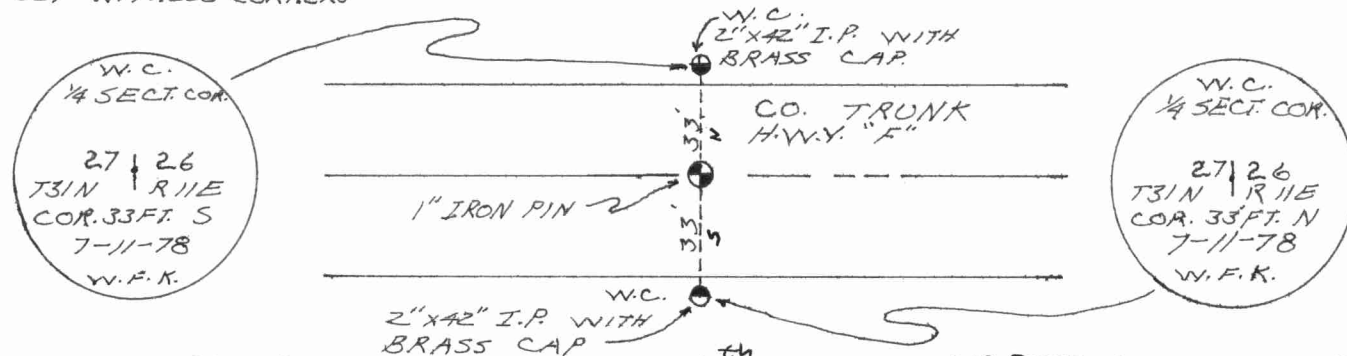
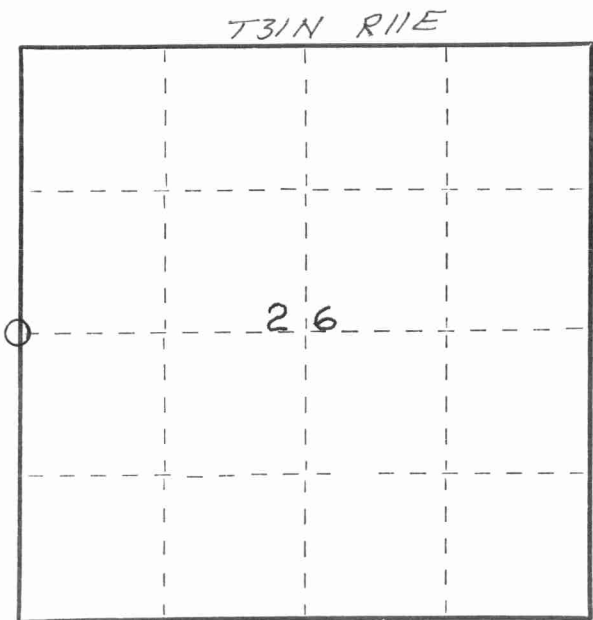
Description of corner evidence found:
LOCATED WEST 1/4 CORNER FROM BECHER-HOPPE CONTROL SURVEY OF AIRPORT PROPERTY. FOUND 1" IRON PIN IN PLACE.



Resident witnesses:

Description of monument and accessories I established to perpetuate the original location of this corner.
SET WITNESS CORNERS

FORM 985 H. C. MILLER CO., MILWAUKEE



Dated at ELCHO, Wis., this 16th day of SEPTEMBER, 1978

Signature: William F. Kelly, Title: COUNTY SURVEYOR, Registration No. S-1098
(County Surveyor, Registered Land Surveyor, or other duly authorized official)

Office of Register of Deeds, County of _____, I hereby certify that the within instrument was filed in this office for record on the _____ day of _____, 19____ at _____ o'clock _____ M.

(Register of Deeds)

By _____ Deputy

○ = Corner monument restored.

43111272000

