

43111270020

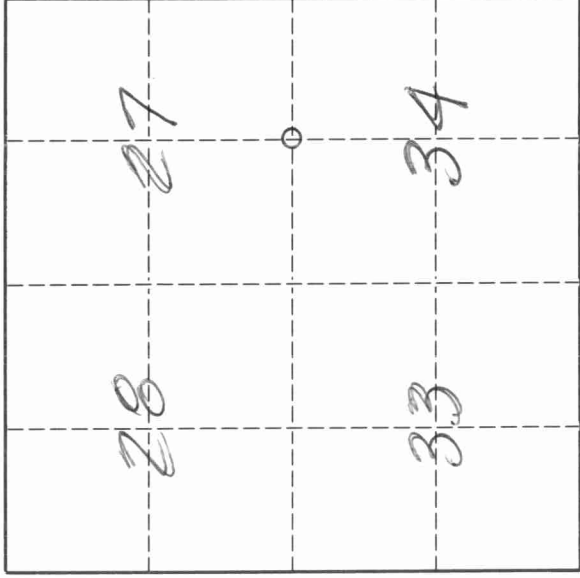
# U. S. PUBLIC LAND SURVEY MONUMENT RECORD

## INSTRUCTIONS:

This record shall show the location of the corner and shall include all of the following nine elements (a through i).

- (a) Identify the corner by reference to the U.S. public land survey system.
- O = Corner monument restored.

South Quarter corner of Section 27, Township 31 North, Range 11 East, Langlade County, Wisconsin.



T. 31 N., R. 11 E.

- (b) Describe any record evidence, monument evidence, occupational evidence, testimonial evidence or any other material evidence you considered, and whether the monument was found or placed.

The original corner was established in 1860 by H.C. Fellows. Original BT's: sugar, 12", S80°E, 20 lks., sugar, 10", N04°W, 11 lks. In 1916, Malcolm Hutchinson called the corner "old stake in road with pieces of iron around in set stone 8" x 10" x 12" with X on top". In 1978, former surveyor Kelly "located iron pipe set at intersection of Co. Truck "AA" and 10th Avenue by Becher-Hoppe Engineers, Inc." 10/95 at a point approx. 4' east of the Kelly corner and 18" down, I found a 3" wide x 3/8" thick piece of iron upright in ground. 4" below piece of iron, I found a stone, 8" x 10" on top. Stone has no "X", but because it is next to piece of iron called for by Hutchinson, I accept it as best evidence of the original corner location.

- (c) In the plan view drawing below, provide reference ties to at least 4 witness monuments, or, if the location is within a municipality, to at least 2 witness monuments. (Witness monuments shall be made of concrete, natural stone, iron or other equally durable material.) Describe witness monuments.

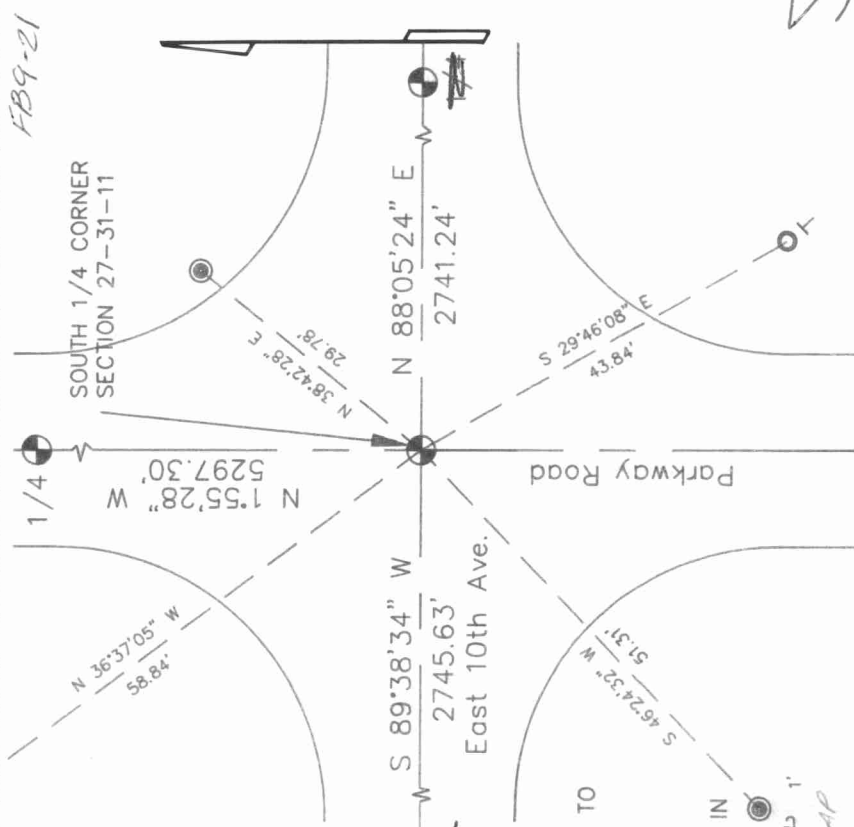
Topped stone with a 1 1/2" x 20" iron pipe with brass cap.

- (d) Show a plan view drawing depicting the relevant monuments and reference ties which is sufficient in detail to enable accurate relocation of the corner monument if the corner monument is disturbed. Indicate north.

- 2" IP W/BC WITNESS FOUND
- 3/4" RE-BAR WITNESS FOUND
- ⊥ POWER POLE
- ⊥ VINYL SIGN POST SET
- 60d SPIKE SET FOR TEMPORARY CORNER MARKER IN ROAD PATCH.
- BEARINGS ASSUMED & REFERENCED TO SECTION LINES SHOWN.
- △ PK NAIL TRAVERSE POINT

SEE ALSO SECTION MAP PREPARED IN CONJUNCTION WITH THIS TIE SHEET.

SET 1 1/2" X 18" ± IR. WITH 4" BRASS CAP OVER NONE FOUND.



V15

4311270020

Describe any material discrepancy between the location of the corner as restored or reestablished and the location of that corner as previously restored or reestablished by distance and direction. Show the discrepancy on the plan view drawing under (d), above. Show the distances between the corner as previously restored or reestablished and (1) the corner as restored or reestablished, and (2) to at least 2 of the witness monuments shown on the drawing in (d), above.

Stone found is approximately N 77°52' E, 3.9' from the Kelly/Becher-Hoppe corner.

- (f) Was the corner restored through acceptance of (1) an obliterated evidence location, or, (2) a found perpetuated location?  
(2) a found perpetuated location.

- (g & h) Was the corner reestablished through lost corner proportionate methods? If so, show the method, including the directions and distances to other public land survey corners used as evidence or used for proportioning in determining the corner location.  
No.

- (i) I, David E. Tlusty, Langlade County Surveyor  
(type or print name)

certify that the corner location shown on this record was determined by me or under my direction and control and that this U.S. Public Land Survey Monument Record is correct and complete to the best of my knowledge and belief.

  
Signature

6/4/96  
Date

