

CERTIFIED LAND CORNER RESTORATION

Index No. V-15

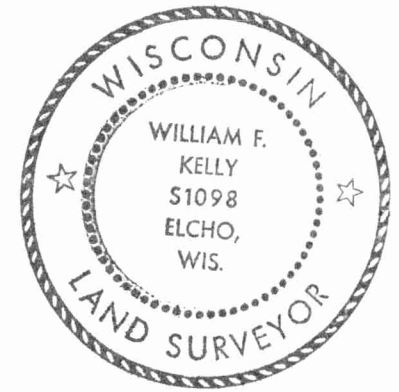
State of Wisconsin }
County of LANGLADE } ss.

History of original corner establishment:

I WILLIAM F. KELLY, do hereby certify that on the 12th day of JULY, 1978, I found evidence of the SOUTH 1/4 corner of SECTION 27 Township 31, North, Range 11E, Fourth Principal Meridian, as described hereon; and that from this evidence I established a new monument and accessories as described hereon to perpetuate the original location of this corner.

Description of corner evidence found:

LOCATED IRON PIPE SET AT INTERSECTION OF CO. TRUNK AA AND 10th AVENUE BY BECHER-HOPPE ENGINEERS, INC.



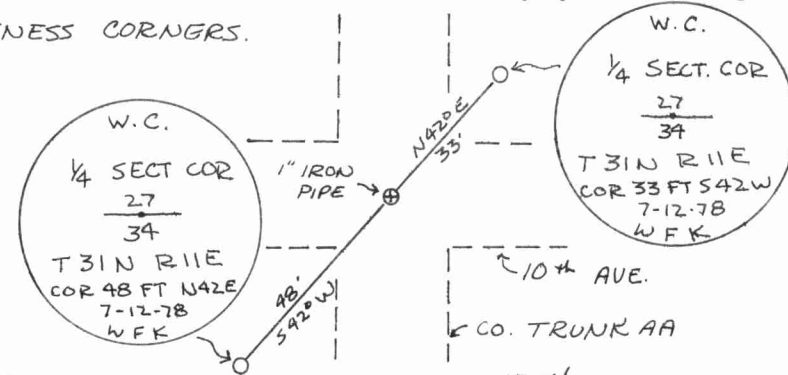
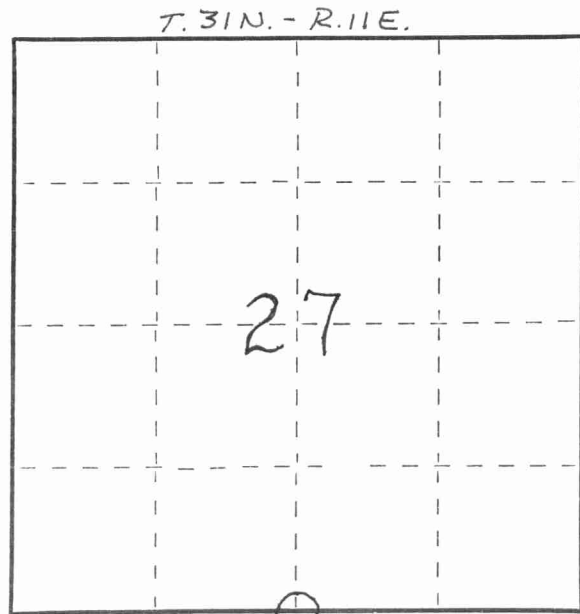
William F. Kelly

Resident witnesses:

.....
.....
.....

Description of monument and accessories I established to perpetuate the original location of this corner.

SET WITNESS CORNERS.



Dated at ELCHO, Wis., this 12th day of JULY, 1978.

Signature William F. Kelly Title REGISTERED LAND SURVEYOR Registration No. S-1098
(County Surveyor, Registered Land Surveyor, or other duly authorized official)

Office of Register of Deeds, County of _____, I hereby certify that the within instrument was filed in this office for record on the _____ day of _____, 19____ at _____ o'clock _____ M.

.....
(Register of Deeds)

By _____ Deputy

○ = Corner monument restored.

FORM 985 H. C. MILLER CO., MILWAUKEE

4311270020

