

# LANGLADE COUNTY U.S. PUBLIC LAND CORNER RESTORATION

The South quarter corner of Section 25, T. 31 N., R. 11 E., Langlade County, WI.

**Corner was: (check all that apply)**

- Restored through acceptance of an obliterated evidence location.
- Restored through acceptance of a found perpetuated location.
- Determined to be lost and re-established through proportionate methods.
  - Show bearings and distances to PLSS corners used for proportioning, and show original distances).
  - Restored/recovered/re-established in a location that differs from a previously established position.
- (Show difference in plan view below).
- Check here if additional information is shown on the reverse side of this form.

13111250020

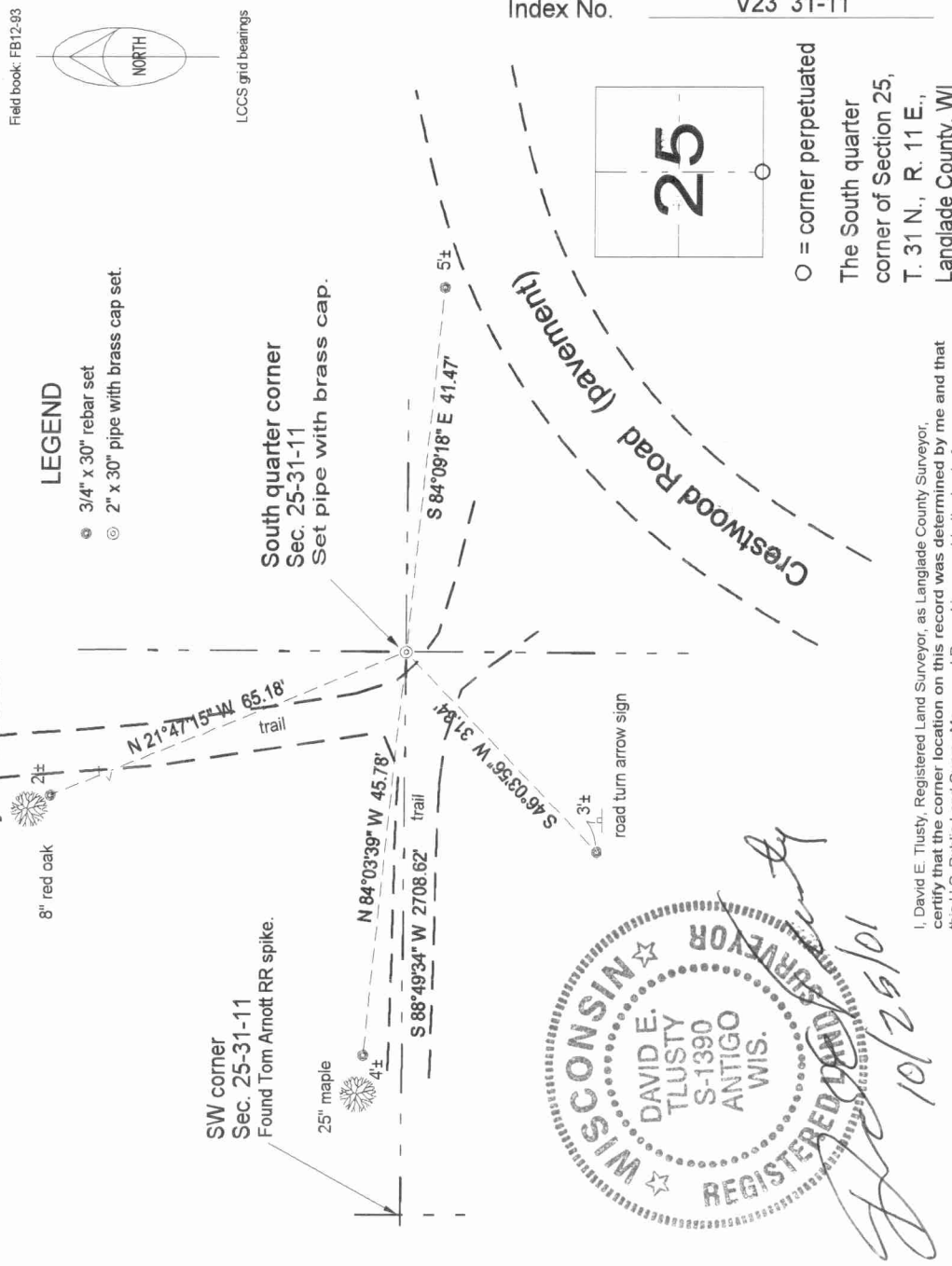
**Describe record evidence, recovered physical evidence, occupational evidence, testimonial evidence and all other evidence considered in the recovery/restoration of the corner.**

The original corner was established in 1860 by Hiram C. Fellows. Original bearing trees: hemlock, 10", S 10° W, 22 links and a hemlock, 12", N73°W, 21 links. Dorr surveyed the N-S quarter line in Section 25 in 1888, Hutchinson, 1916, measured from this corner to the section corner east, but didn't mention what was at this corner. Former surveyor Kelly, 1986, "Located point set by Hutchinson. Set new monument and marked new bearing trees". 10/17/01 D. Tlusty found Kellys aluminum monument bent north, cap missing. Found old well point next to the alum. mon. I accepted the location of Kellys monument as the best evidence of the corner and replaced it (at straightened position) with the monument described below. I then measured 49.87' to the nail in the face of Kellys BT west. (Kellys dist.: 49.85) His other BT's are grown shut.

**Physical description of the monument set:**

Set 2" (ID) x 30" galvanized, flared bottom iron pipe with brass cap, flush with ground.  
Set white vinyl sign post 2' north of corner monument.

**Describe the accessories used to perpetuate the corner. Include a plan view drawing and accessories found/set. Describe measuring point on bearing trees. Show any topographic features that would aid in future recovery of the corner.**



I, David E. Tlusty, Registered Land Surveyor, as Langlade County Surveyor, certify that the corner location on this record was determined by me and that this U.S. Public Land Survey Monument Record is correct to the best of my knowledge and belief.

