

43111242000

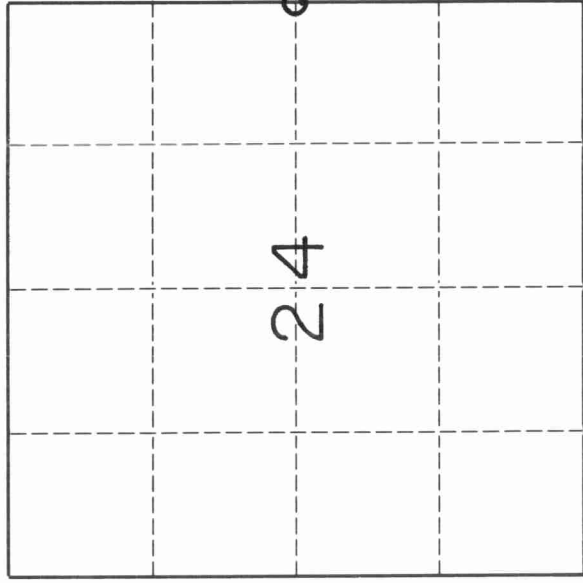
# U. S. PUBLIC LAND SURVEY MONUMENT RECORD

## INSTRUCTIONS:

This record shall show the location of the corner and shall include all of the following nine elements (a through i).

- (a) Identify the corner by reference to the U.S. public land survey system.
- O = Corner monument restored.

East Quarter Corner,  
 Section 24  
 Township 31 North,  
 Range 11 East,  
 Langlade County,  
 Wisconsin

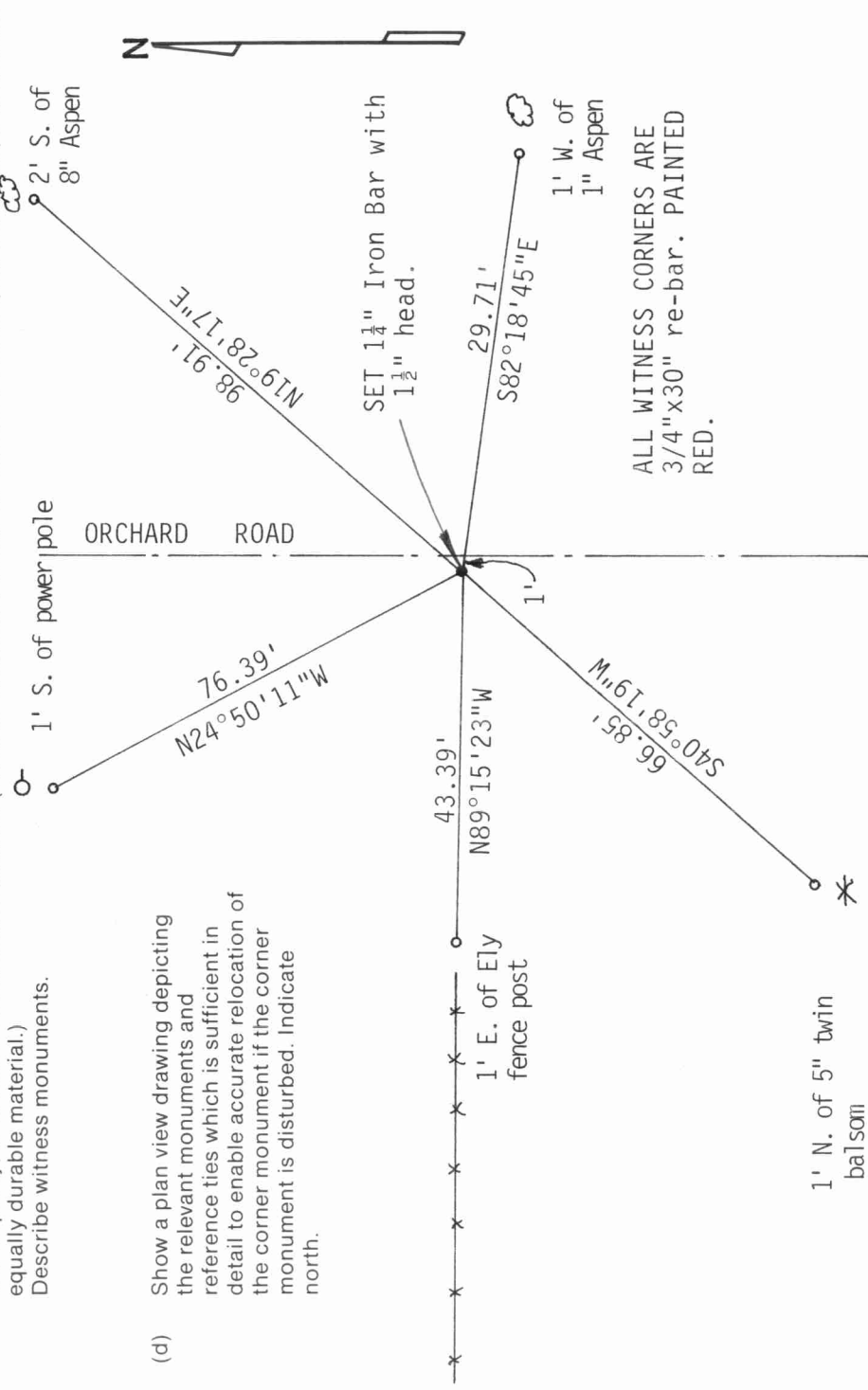


Section 24, T31N R11E

- (b) Describe any record evidence, monument evidence, occupational evidence, testimonial evidence or any other material evidence you considered, and whether the monument was found or placed.

Notes by E.S. Brooks, April, 1905 talk about a stone with a cross at this corner. There is a detailed Section Break Down of 19-31-12 with distances to this corner. Dug on old fence line to West, which matched split of mile distance. Went through black top, sand lift, heavy, disturbed muck, and finally, original undisturbed soil at depth of 3'. Dug hole 12' North-South, and 7' East-West. Found no evidence of corner. Land to West is slightly higher, stone may have been knocked out at road construction. Pete Suick, witness, said Town Supervisor had no information on existence of corner. Proportioned North-South distance, set corner on straight line. Matched old fence to West very well, 1' West of existing center line. Tied out.

- (c) In the plan view drawing below, provide reference ties to at least 4 witness monuments, or, if the location is within a municipality, to at least 2 witness monuments. (Witness monuments shall be made of concrete, natural stone, iron or other equally durable material.) Describe witness monuments.



- (d) Show a plan view drawing depicting the relevant monuments and reference ties which is sufficient in detail to enable accurate relocation of the corner monument if the corner monument is disturbed. Indicate north.

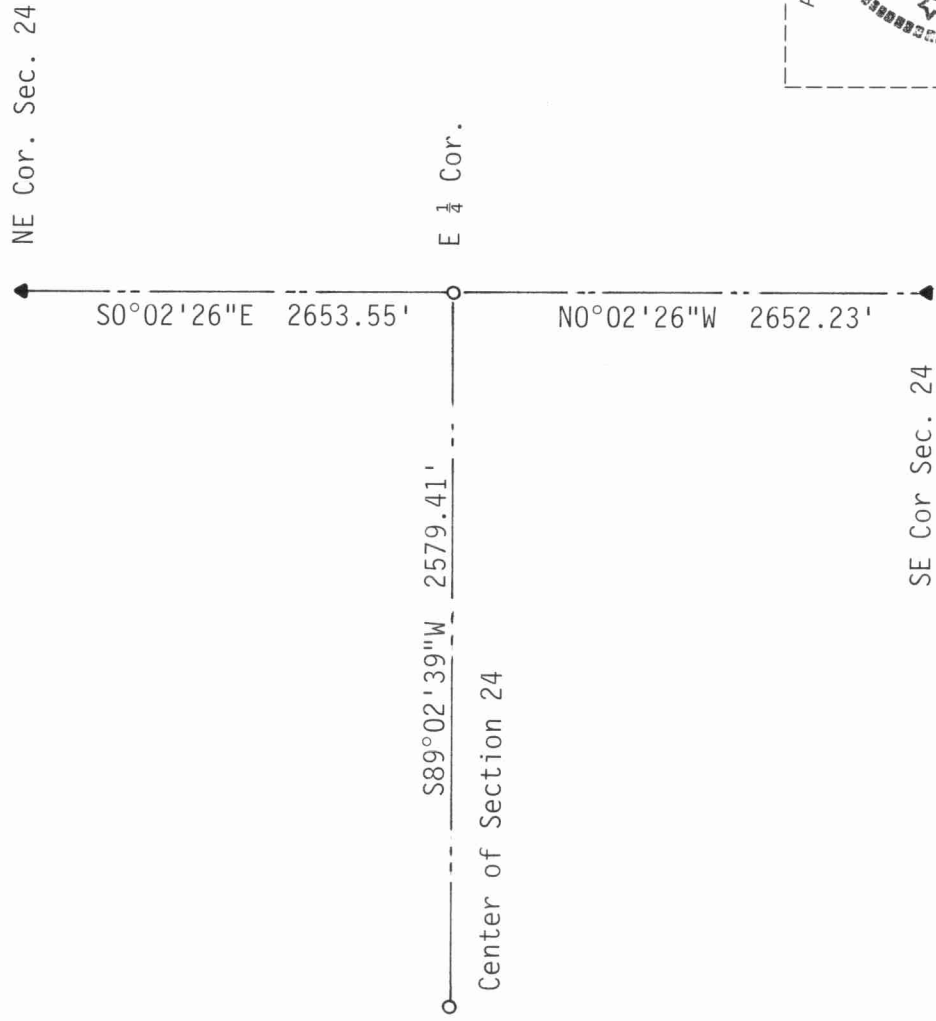
43111242000

Describe any material discrepancy between the location of the corner as restored or reestablished and the location of that corner as previously restored or reestablished by distance and direction. Show the discrepancy on the plan view drawing under (d), above. Show the distances between the corner as previously restored or reestablished and (1) the corner as restored or reestablished, and (2) to at least 2 of the witness monuments shown on the drawing in (d), above.

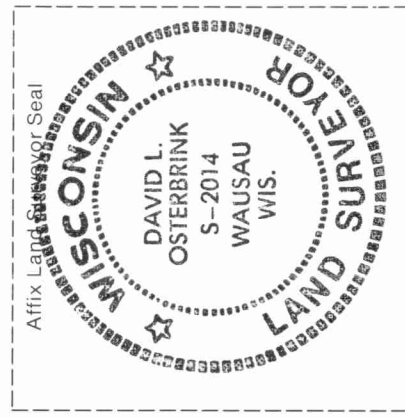
No discrepancies

(f) Was the corner restored through acceptance of (1) an obliterated evidence location, or, (2) a found perpetuated location?  
1

(g & h) Was the corner reestablished through lost corner proportionate methods? If so, show the method, including the directions and distances to other public land survey corners used as evidence or used for proportioning in determining the corner location.  
Held Northeast corner, and Southeast corner of Section 24, Straight lined, and proportioned distance to old Section break down of May, 1906



(i) I, David L. Osterbrink (type or print name)  
certify that the corner location shown on this record was determined by me or under my direction and control and that this U.S. Public Land Survey Monument Record is correct and complete to the best of my knowledge and belief.



David L. Osterbrink Signature  
Date 7-2-92  
David L. Osterbrink RLS No. S-2014