

U.S. PUBLIC LAND SURVEY MONUMENT RECORD

(Prepared and as required by S. A-E 7.08 WI Administrative Code)

The SOUTH 1/4 corner of Section 24, T. 31 N., R. 11 E., Langlade County, WI
 Corner was (check all that apply)

- Restored through acceptance of an obliterated evidence location.
- Restored through acceptance of a found perpetuated location.
- Determined to be lost and re-established through proportionate methods. (show bearings and distances to PLSS corners used for proportioning.)
- Restored/recovered/re-established in a location that differs from a previously established position. (Show difference in plan view below.)
- Check here if additional information is shown on the reverse side of this form.

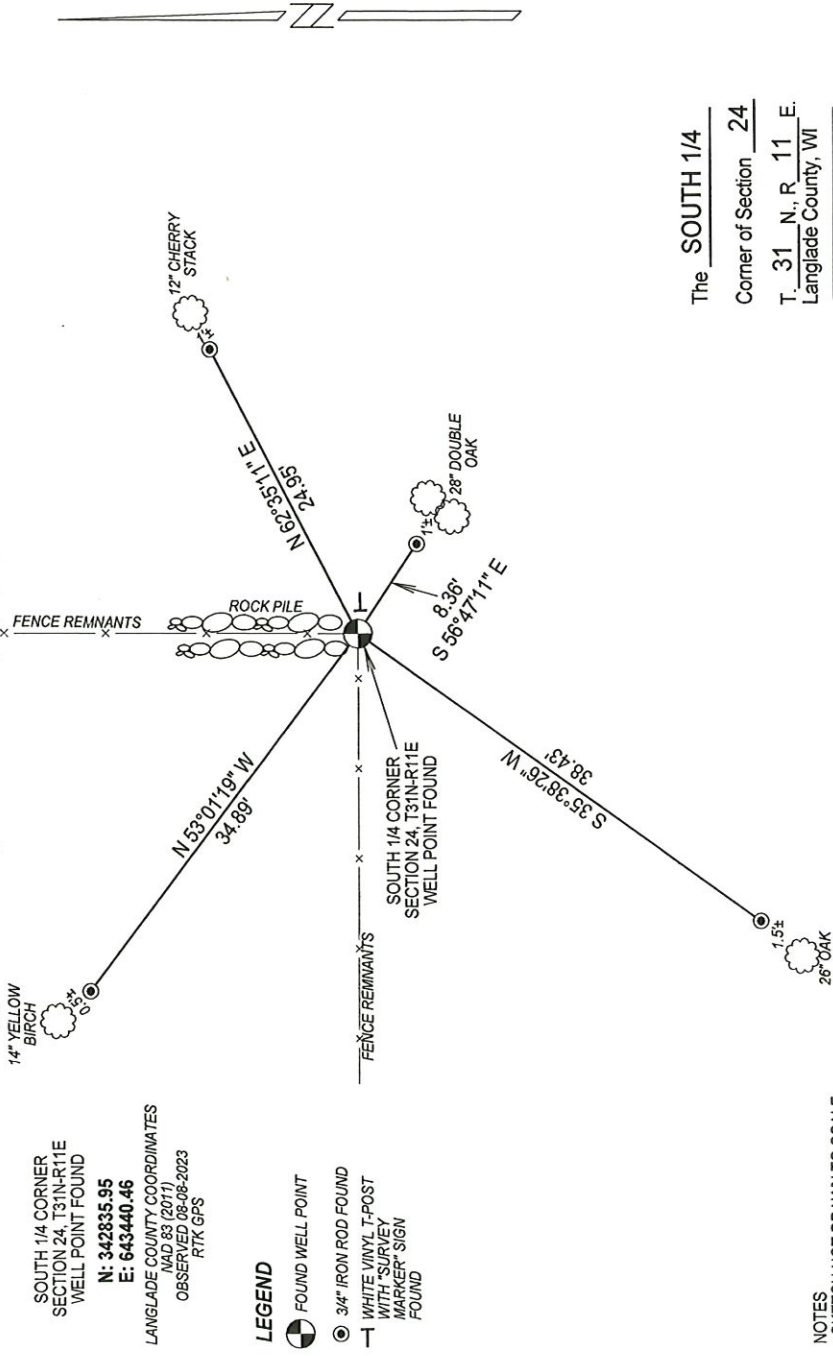
Describe record evidence, recovered physical evidence, occupational evidence, testimonial evidence, and all other evidence considered in the recovery/restoration of the corner.

- 1860 - Original corner established by H.C. Fellows - bearing trees: Sugar, 8", N30°E, 20 links; Sugar, 10", S55°W, 15 links.
- 1970 - Robert Poss "found 4"x4" galv. angle iron - about 10 ft long 5 ft above ground. Huge rock pile. Also found well point at property cor. 40 rods west. Marks by Hutchinson on grey boulder missing - probably in rock pile." Poss made ties and filed a tie sheet.
- 2004 - Daniel Higginbotham "found a well point at the base of the angle iron next to the rock pile." He "straightend the well point and located it as the 1/4 corner." Higginbotham made ties and filed a tie sheet.
- 2023 - I found the well point referenced by Higginbotham and Poss in good condition. Found existing ties set by Higginbotham in good condition. Location matches with previous survey work in the area.

Physical description of the monument set:

Accepted well point as corner location and tied out as shown below.

Describe the accessories used to perpetuate the location of the corner. Include a plan view drawing and indicate accessories found/set. Describe measuring point on bearing trees. Show any topographic features that would aid in future recovery of the corner.



SOUTH 1/4 CORNER SECTION 24, T31N-R11E WELL POINT FOUND
 N: 342835.95
 E: 643440.46
 LANGLADE COUNTY COORDINATES
 NAD 83 (2011)
 OBSERVED 08-06-2023
 RTK GPS

- LEGEND**
- FOUND WELL POINT
 - 3/4" IRON ROD FOUND
 - ⊥ WHITE VINYL T-POST WITH SURVEY MARKER SIGN FOUND

NOTES
 - SKETCH NOT DRAWN TO SCALE.
 - TIE BEARINGS SHOWN ARE ASSUMED.
 - ALL TIES MEASURED ELECTRONICALLY WITH TOTAL STATION.

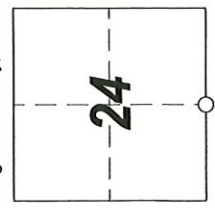
SURVEYORS SEAL



I, Michael J. Hoffman certify that the corner location shown on this record was determined by me or under my direction and control and that this U.S. Public Land Survey Monument Record is correct and complete to the best of my knowledge and belief.

Michael Hoffman Signature
09-27-2023 Date

The SOUTH 1/4
 Corner of Section 24
 T. 31 N., R. 11 E.
 Langlade County, WI



○ = Location of corner

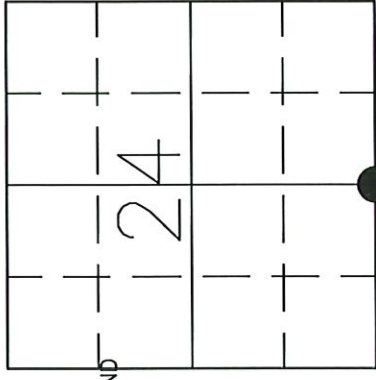
43/11240020

U.S. PUBLIC LAND SURVEY MONUMENT RECORD

HISTORY OF ORIGINAL CORNER ESTABLISHMENT AND SUBSEQUENT RESTORATION AND DESCRIPTION OF ANY RECORD, MONUMENT OCCUPATIONAL, TESTIMONIAL OR OTHER EVIDENCE CONSIDERED:

THE ORIGINAL CORNER WAS ESTABLISHED IN 1860 BY H.C. FELLOWS. ORIGINAL BT'S: 8"SUGAR MAPLE N30E,20LK; 10"SUGAR MAPLE S53W,15LK. IN JUNE OF 1970, ROBERT POSS VISITED THIS 1/4 CORNER AND FOUND A GALV. ANGLE IRON 5 FT ABOVE THE GROUND NEXT TO A "HUGE ROCK PILE" AND USED THAT FOR THE CORNER. POSS MENTIONS: "MARKS BY HUTCHINSON ON GREY BOULDER MISSING--PROBABLY IN ROCK PILE". ON DEC 1, 2004, JAKE JENSEN AND GERRY BAHAR FOUND A WELL POINT AT THE BASE OF THE ANGLE IRON NEXT TO THE ROCK PILE. WE STRAIGHTENED THE WELL POINT AND LOCATED IT AS THE 1/4 CORNER AND TIED OUT AS SHOWN BELOW.

● = LOCATION OF CORNER

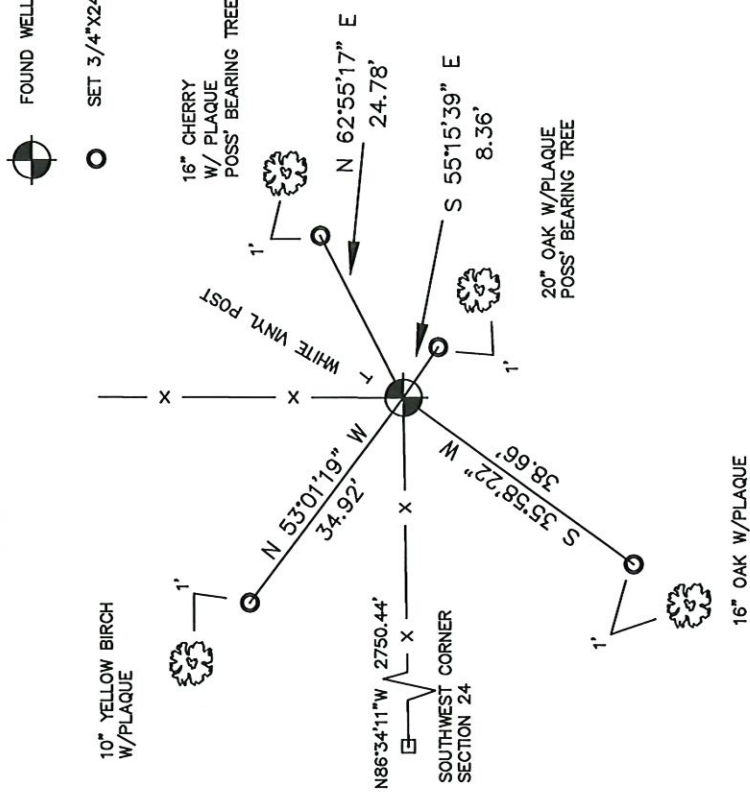


SECTION 24
TOWNSHIP 31 NORTH, RANGE 11 EAST
TOWN OF ANTIGO
LANGLADE COUNTY, WISCONSIN

CORNER WAS: (CHECK ALL THAT APPLY)

- RESTORED THROUGH ACCEPTANCE OF AN OBLITERATED EVIDENCE LOCATION
- RESTORED THROUGH ACCEPTANCE OF A FOUND PERPETUATED LOCATION
- CONSIDERED A LOST CORNER AND REESTABLISHED THROUGH LOST CORNER PROPORTIONATE METHODS (INCLUDE A PLAN VIEW DRAWING SHOWING DISTANCES AND DIRECTIONS TO OTHER PUBLIC LAND SURVEY CORNERS USED FOR PROPORTIONING AND DETERMINING THE CORNER LOCATION)
- RESTORED OR REESTABLISHED IN A LOCATION THAT DIFFERS FROM A PREVIOUS RESTORATION OR REESTABLISHMENT (INCLUDE A PLAN VIEW DRAWING AND INDICATE WHAT WAS SET AND/OR FOUND)
- CHECK IF THERE IS ADDITIONAL INFORMATION ON BACK

DESCRIBE THE MONUMENT AND ACCESSORIES USED TO PERPETUATE THE LOCATION OF THE CORNER. (INCLUDE A PLAN VIEW DRAWING AND INDICATE WHAT WAS SET AND/OR FOUND) ALSO INCLUDE FOUR TIES TO THE SECTION CORNER AND DESCRIPTION OF THE TIES.



○ SET 3/4"x24" REBARS AT TIE LOCATIONS

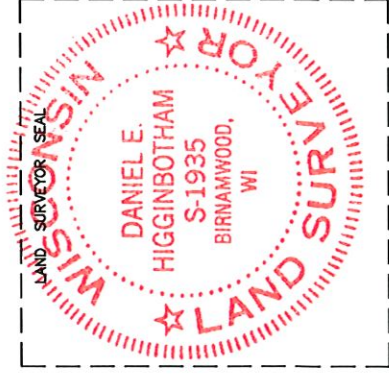
○ FOUND WELL POINT AT FENCE CORNER



DANIEL E. HIGGINBOTHAM
(Type or print name) CERTIFY THAT THE CORNER LOCATION SHOWN ON THIS RECORD WAS DETERMINED BY ME OR UNDER MY DIRECTION AND CONTROL AND THAT THIS U.S. PUBLIC LAND SURVEY MONUMENT RECORD IS CORRECT AND COMPLETE TO THE BEST OF MY KNOWLEDGE AND BELIEF.

D. Higginbotham
SIGNATURE

12/06/05
DATE



R 23

INDEX NO.

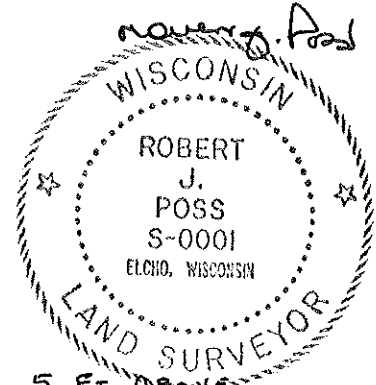
CERTIFIED LAND CORNER RESTORATION

31-11
Index No. R-23

State of Wisconsin }
County of LANGLADE } ss.

History of original corner establishment:

I ROBERT J. POSS, do hereby certify that on the 19TH day of JUNE, 1970, I found evidence of the 1/4 COR corner of SEC. 24 - 25 Township 31, North, Range 11 EAST, Fourth, Principal Meridian, as described hereon; and that from this evidence I established a new monument and accessories as described hereon to perpetuate the original location of this corner.



Description of corner evidence found:

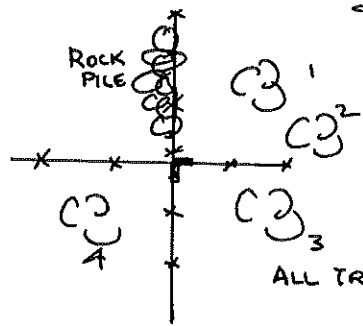
FOUND 4"x4" GALV. ANGLE IRON - ABOUT 10 FT LONG 5 FT ABOVE GROUND. HUGE ROCK PILE. ALSO FOUND WELL POINT AT PROPERTY COR. 40 RODS WEST. MARKS BY HUTCHINSON ON GREY BOULDER MISSING - PROBABLY IN ROCK PILE.

Resident witnesses:

HERBERT CARLEY JR.

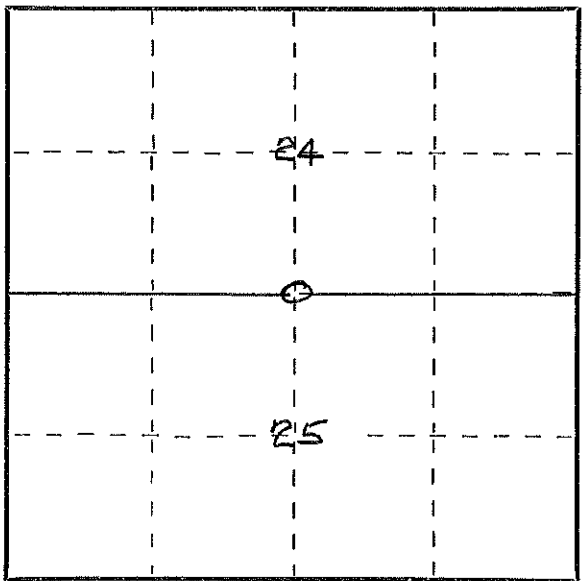
Description of monument and accessories I established to perpetuate the original location of this corner.

SET NO MONUMENT. CORNER IS IN HUGE ROCK PILE.



- FENCES VERY OLD. POOR COND.
- 1: CHERRY 16 NS8E 26.0
 - 2: ELM 28 N79E 24.5
 - 3: LARGEST OF TRIPLE MAPLE 20 S55E 9.0
 - 4: HD. MAPLE 10 S67 1/2 W 9.0

ALL TREES BLAZED & DESCRIBED NBT



○ = Corner monument restored.

Dated at ELCHO, Wis., this 19TH day of JUNE, 1970

Signature Robert J. Poss Title REG. LAND SURVEYOR Registration No. S-0001
(County Surveyor, Registered Land Surveyor, or other duly authorized official)

Office of Register of Deeds, County of _____, I hereby certify that the within instrument was filed in this office for record on the _____ day of _____, 19____ at _____ o'clock _____ M.

(Register of Deeds)

By _____ Deputy

FORM 985 H. G. MILLER CO., MILWAUKEE
4311240020