

# U.S. PUBLIC LAND SURVEY MONUMENT RECORD

(Prepared and as required by S. A-E 7.08 WI Administrative Code)

The CENTER 1/4 corner of Section 23, T. 31 N., R. 11 E., Langlade County, WI  
 Corner was (check all that apply)

- Restored through acceptance of an obliterated evidence location.
- Restored through acceptance of a found perpetuated location.
- Determined to be lost and re-established through proportionate methods. (show bearings and distances to PLSS corners used for proportioning.)
- Restored/recovered/re-established in a location that differs from a previously established position. (Show difference in plan view below.)
- Check here if additional information is shown on the reverse side of this form.

**Describe record evidence, recovered physical evidence, occupational evidence, testimonial evidence, and all other evidence considered in the recovery/restoration of the corner.**

Corner not set as part of original survey.

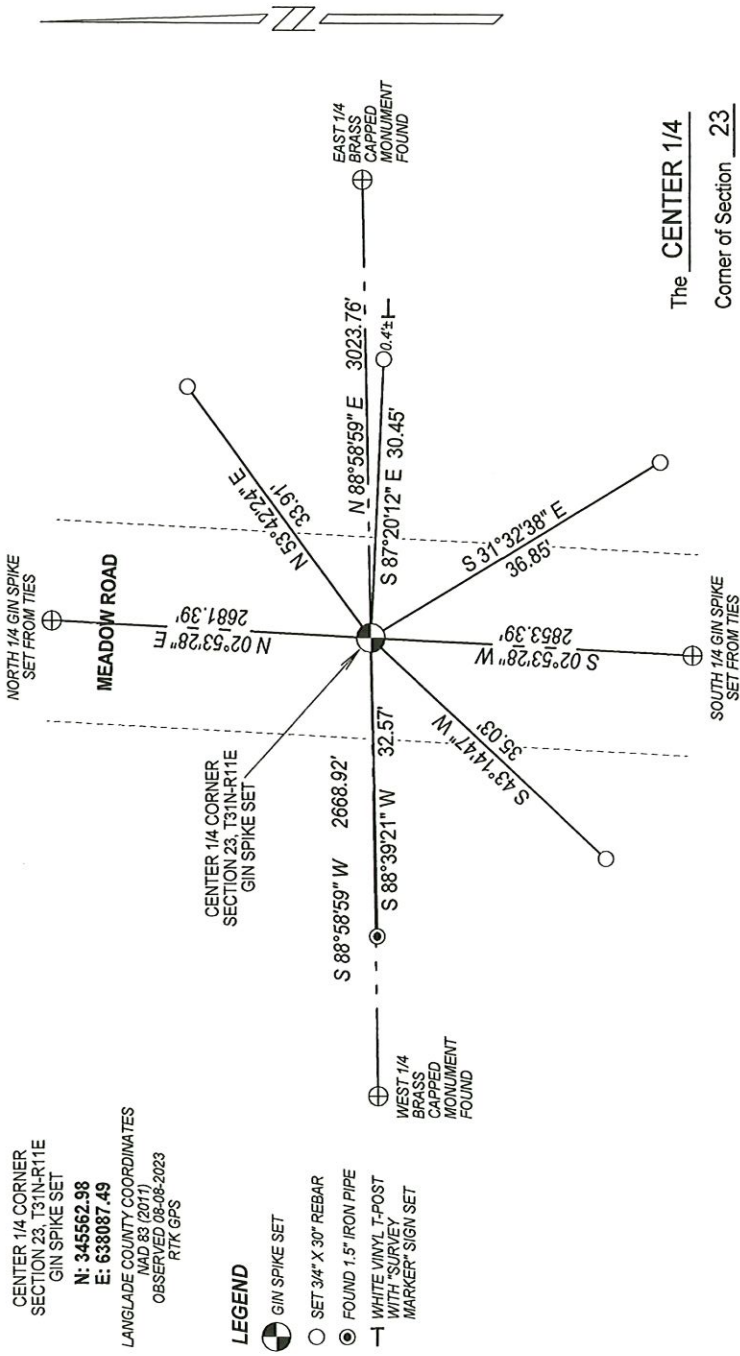
1981 - Thomas Arnott set a railroad spike at center of section at the intersection of 1/4 lines. Arnott made ties and filed a tie sheet.

2023 - I did not find railroad spike set by Arnott. Road was recently paved. Ties by Arnott were in poor condition. Set corner at intersection of 1/4 lines.

### Physical description of the monument set:

Set gin spike at corner location, tied out as shown below.

Describe the accessories used to perpetuate the location of the corner. Include a plan view drawing and indicate accessories found/set. Describe measuring point on bearing trees. Show any topographic features that would aid in future recovery of the corner.



NOTES  
 - SKETCH NOT DRAWN TO SCALE.  
 - TIE BEARINGS SHOWN ARE LANGLADE COUNTY GRID BEARINGS.  
 - ALL TIES MEASURED ELECTRONICALLY WITH TOTAL STATION.

I, Michael J. Hoffman certify that the corner location shown on this record was determined by me or under my direction and control and that this U.S. Public Land Survey Monument Record is correct and complete to the best of my knowledge and belief.

Michael J. Hoffman 09-27-2023  
 Signature Date

SURVEYORS SEAL



The CENTER 1/4  
 Corner of Section 23  
 T. 31 N., R. 11 E.  
 Langlade County, WI



○ = Location of corner

CERTIFIED LAND CORNER RESTORATION

Index No. P-19

State of Wisconsin }  
County of Lanlade } ss.

History of original corner establishment:

None

I Thomas R. Arnott, do hereby certify that on the 23 day of Oct, 1981, I found evidence of the center of section corner of section 23 Township 31, North, Range 11E, Fourth Principal Meridian, as described hereon; and that from this evidence I established a new monument and accessories as described hereon to perpetuate the original location of this corner.

Description of corner evidence found:

None

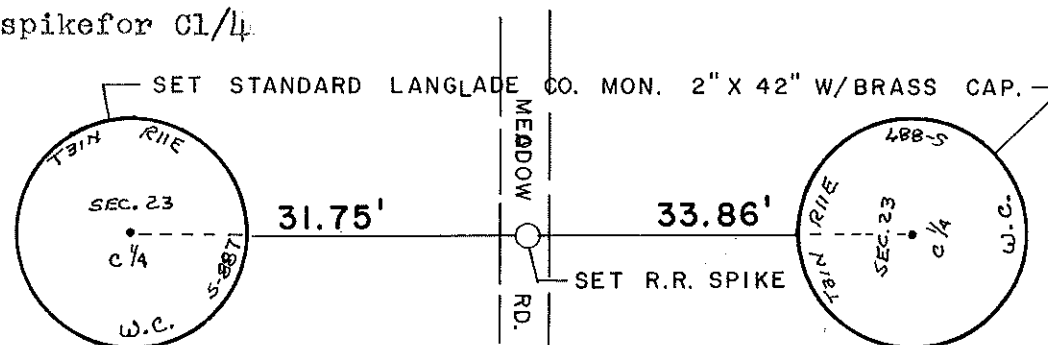
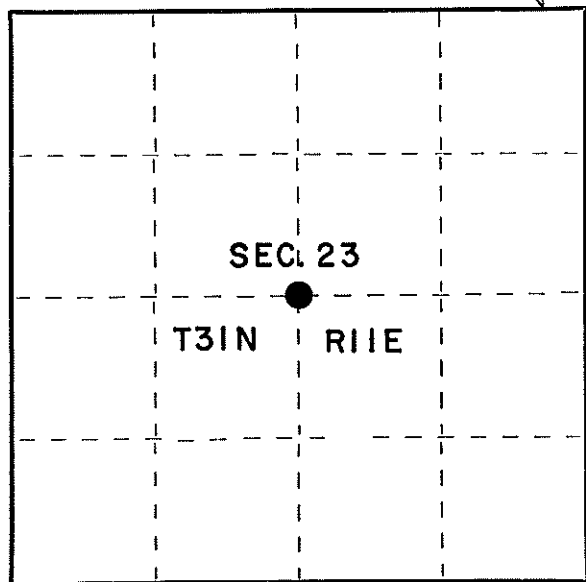
Set center of section at the intersection of straight lines between the north and south 1/4 corners and the east and west 1/4 corners.

Resident witnesses:

THOMAS R. ARNOTT  
S-887  
CRANDON  
WIS.

Description of monument and accessories I established to perpetuate the original location of this corner.

**N** Set R.R. spike for C1/4



Dated at Crandon, Wis., this 8th day of December, 1981

Signature Thomas R. Arnott Title Surveyor Registration No. S-887  
(County Surveyor, Registered Land Surveyor, or other duly authorized official)

Office of Register of Deeds, County of Lanlade, I hereby certify that the within instrument was filed in this office for record on the \_\_\_\_\_ day of \_\_\_\_\_, 19\_\_\_\_ at \_\_\_\_\_ o'clock \_\_\_\_\_ M.

(Register of Deeds)

By \_\_\_\_\_ Deputy

FORM 965 H. C. MILLER CO., MILWAUKEE

43111230020

○ = Corner monument restored.