

U.S. PUBLIC LAND SURVEY MONUMENT RECORD

(Prepared and as required by S. A-E 7.08 WI Administrative Code)

The SOUTH 1/4 corner of Section 23, T. 31 N., R. 11 E., Langlade County, WI
 Corner was (check all that apply)

- Restored through acceptance of an obliterated evidence location.
- Restored through acceptance of a found perpetuated location.
- Determined to be lost and re-established through proportionate methods. (show bearings and distances to PLSS corners used for proportioning.)
- Restored/recovered/re-established in a location that differs from a previously established position. (Show difference in plan view below.)
- Check here if additional information is shown on the reverse side of this form.

Describe record evidence, recovered physical evidence, occupational evidence, testimonial evidence, and all other evidence considered in the recovery/restoration of the corner.

1860 - Original corner established by H.C. Fellows - bearing trees: Birch, 7", N41°W, 30 links; Sugar, 10", S30°W, 18 links.

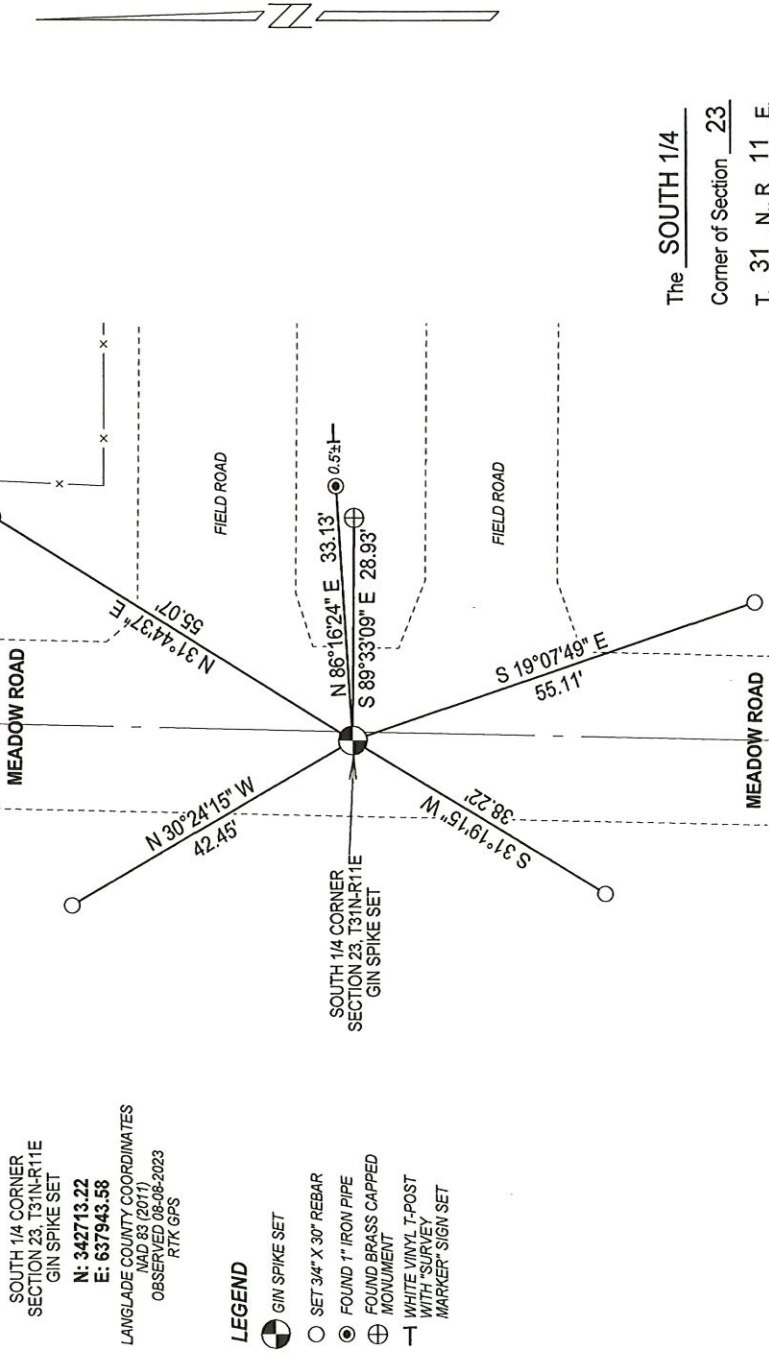
1981 - Thomas Arnott found iron below blacktop of Meadow road, set railroad spike above iron found. Arnott made ties and filed a tie sheet.

2023 - I did not find the railroad spike set by Arnott. Road was recently repaved. I reset corner at coordinates previously established on railroad spike. Location matches with previous survey work in the area.

Physical description of the monument set:

Set gin spike at corner location, tied out as shown below.

Describe the accessories used to perpetuate the location of the corner. Include a plan view drawing and indicate accessories found/set. Describe measuring point on bearing trees. Show any topographic features that would aid in future recovery of the corner.



SOUTH 1/4 CORNER
SECTION 23, T31N-R11E
GIN SPIKE SET

N: 342713.22
E: 637943.58

LANGLADE COUNTY COORDINATES
NAD 83 (2011)
OBSERVED 08-06-2023
RTK GPS

LEGEND



- SET 3/4" X 30" REBAR
- ⊙ FOUND 1" IRON PIPE MONUMENT
- ⊕ FOUND BRASS CAPPED MONUMENT
- | WHITE VINYL T-POST WITH "SURVEY MARKER" SIGN SET

NOTES
 - SKETCH NOT DRAWN TO SCALE.
 - TIE BEARINGS SHOWN ARE LANGLADE COUNTY GRID BEARINGS.
 - ALL TIES MEASURED ELECTRONICALLY WITH TOTAL STATION.

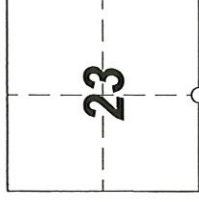
SURVEYORS SEAL



I, Michael J. Hoffman certify that the corner location shown on this record was determined by me or under my direction and control and that this U.S. Public Land Survey Monument Record is correct and complete to the best of my knowledge and belief.

Michael J. Hoffman 09-27-2023
 Signature Date

The SOUTH 1/4
 Corner of Section 23
 T. 31 N., R. 11 E.
 Langlade County, WI



○ = Location of corner

INDEX No. **R - 19** 4311123 0020

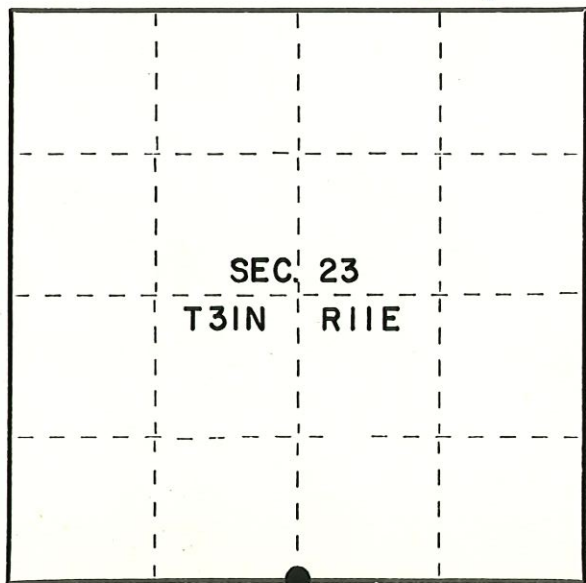
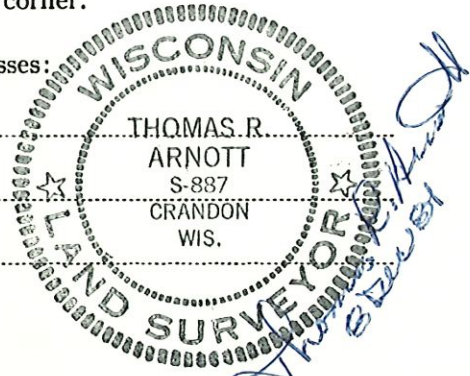
CERTIFIED LAND CORNER RESTORATION

Index No. R-19

State of Wisconsin }
County of Langlade } ss.

I Thomas R. Arnott, do hereby certify that on the 22 day of Oct, 1981, I found evidence of the 1/4 corner of sections 23 and 26 Township 31, North, Range 11 E, Fourth Principal Meridian, as described hereon; and that from this evidence I established a new monument and accessories as described hereon to perpetuate the original location of this corner.

Resident witnesses:



○ = Corner monument restored.

History of original corner establishment:

Orig. by Heraice Fellows
Sept. 1 thru 6, 1860

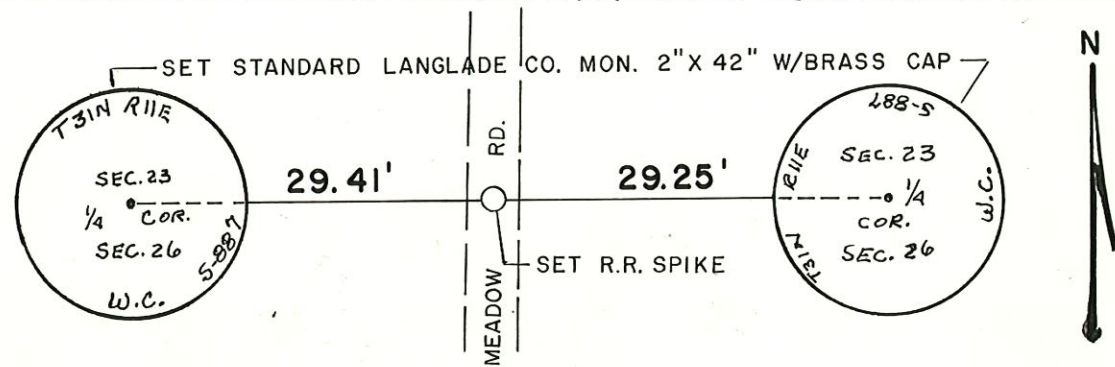
Birch	7	N41W	3 lks
Sugar	10	S30W	18 lks

Description of corner evidence found:

Found iron below blacktop of Meadow Road.

Set R.R. spike above iron found.

Description of monument and accessories I established to perpetuate the original location of this corner.



Dated at Crandon Wis., this 8th day of December, 1981

Signature Thomas R. Arnott Title Surveyor Registration No. S-887
(County Surveyor, Registered Land Surveyor, or other duly authorized official)

Office of Register of Deeds, County of Langlade, I hereby certify that the within instrument was filed in this office for record on the _____ day of _____, 19____ at _____ o'clock _____ M.

(Register of Deeds)

By _____ Deputy

FORM 985 H. C. MILLER CO., MILWAUKEE

43111230020