

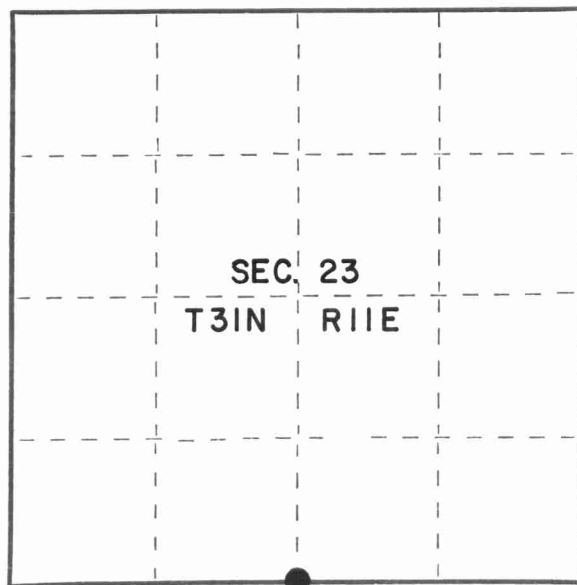
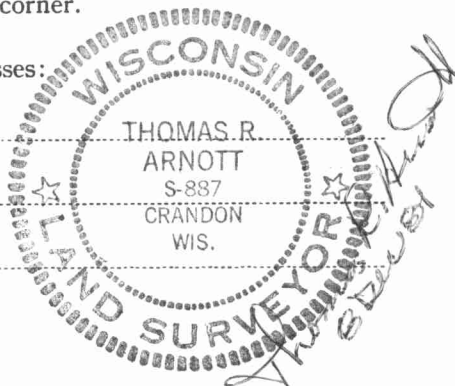
CERTIFIED LAND CORNER RESTORATION

Index No. R-19

State of Wisconsin }  
 County of Langlade } ss.

I, Thomas R. Arnott, do hereby certify that on the 22 day of Oct, 1981, I found evidence of the 1/4 corner of sections 23 and 26 Township 31, North, Range 11 E, Fourth Principal Meridian, as described hereon; and that from this evidence I established a new monument and accessories as described hereon to perpetuate the original location of this corner.

Resident witnesses:



○ = Corner monument restored.

History of original corner establishment:

Orig. by Heraice Fellows  
 Sept. 1 thru 6, 1860

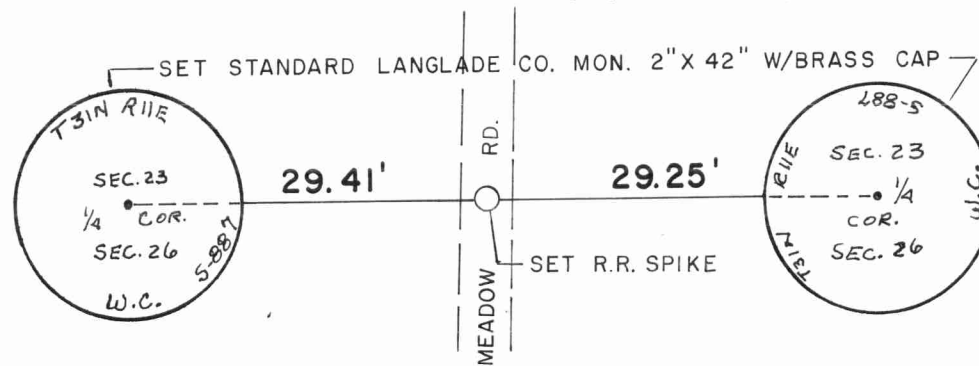
Birch	7	N41W	3 lks
Sugar	10	S30W	18 lks

Description of corner evidence found:

Found iron below blacktop of Meadow Road.

Set R.R. spike above iron found.

Description of monument and accessories I established to perpetuate the original location of this corner.



Dated at Crandon, Wis., this 8th day of December, 1981

Signature Thomas R. Arnott Title Surveyor Registration No. S-887  
 (County Surveyor, Registered Land Surveyor, or other duly authorized official)

Office of Register of Deeds, County of Langlade, I hereby certify that the within instrument was filed in this office for record on the \_\_\_\_\_ day of \_\_\_\_\_, 19\_\_\_\_ at \_\_\_\_\_ o'clock \_\_\_\_\_ M.

(Register of Deeds)

By \_\_\_\_\_ Deputy

FORM 985 R. G. MILLER CO., MILWAUKEE

43111230020

