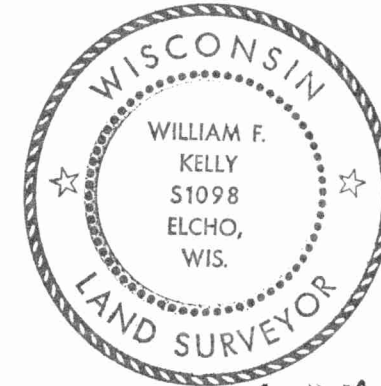


CERTIFIED LAND CORNER RESTORATION

Index No. 0-15



William F. Kelly

State of Wisconsin }
County of LANGLADE } ss.

I WILLIAM F. KELLY, do hereby certify that on the 5th day of JULY, 1978, I found evidence of the NORTH CENTER 1/4 corner of SECTION 22 Township 31, North, Range 11E, Fourth Principal Meridian, as described hereon; and that from this evidence I established a new monument and accessories as described hereon to perpetuate the original location of this corner.

History of original corner establishment:

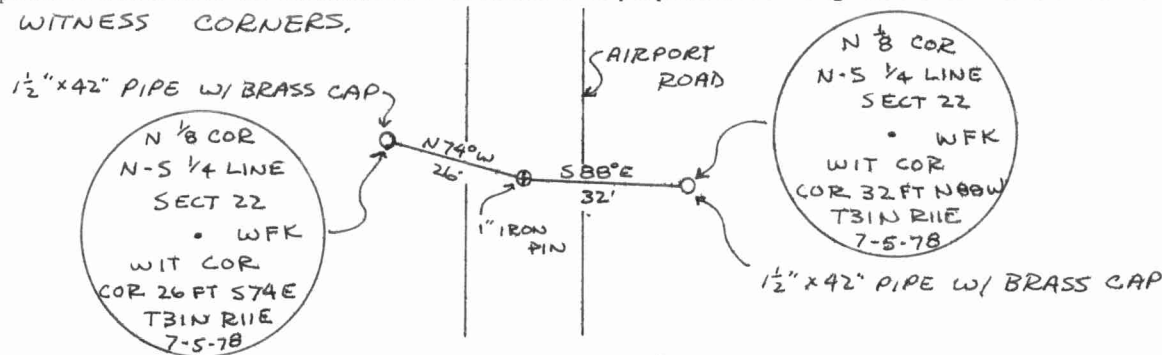
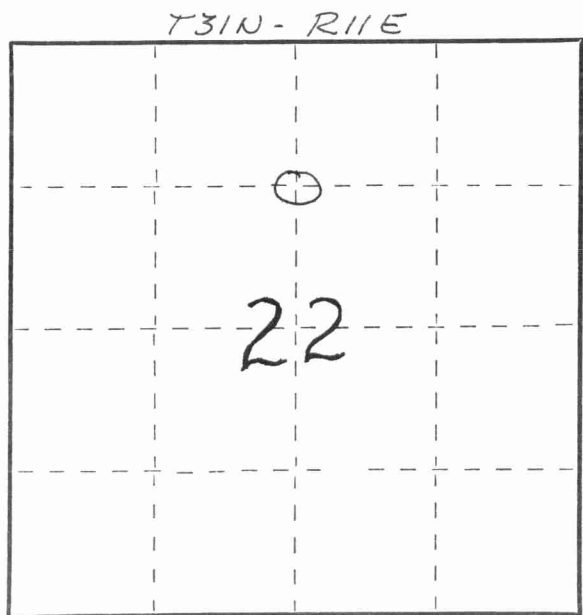
Description of corner evidence found:

LOCATED A 1" IRON PIN IN THE CENTER OF AIRPORT ROAD SET BY BECHER-HOPPE ENGINEERS INC.

Resident witnesses:

.....
.....
.....

Description of monument and accessories I established to perpetuate the original location of this corner.
SET WITNESS CORNERS.



Dated at ELCHO, Wis., this 5th day of JULY, 1978

Signature William F. Kelly Title REGISTERED LAND SURVEYOR Registration No. 5-1098
(County Surveyor, Registered Land Surveyor, or other duly authorized official)

Office of Register of Deeds, County of, I hereby certify that the within instrument was filed in this office for record on the day of, 19..... at o'clock M.

(Register of Deeds)

By Deputy

FORM 965 H. C. MILLER CO., MILWAUKEE

43111223020

○ = Corner monument restored.

