

U.S. PUBLIC LAND SURVEY MONUMENT RECORD

(Prepared and as required by S. A-E 7.08 WI Administrative Code)

The CENTER 1/4 corner of Section 22, T. 31 N., R. 11 E., Langlade County, WI
Corner was (check all that apply)

- Restored through acceptance of an obliterated evidence location.
- Restored through acceptance of a found perpetuated location.
- Determined to be lost and re-established through proportionate methods. (show bearings and distances to PLSS corners used for proportioning.)
- Restored/recovered/re-established in a location that differs from a previously established position. (Show difference in plan view below.)
- Check here if additional information is shown on the reverse side of this form.

Describe record evidence, recovered physical evidence, occupational evidence, testimonial evidence, and all other evidence considered in the recovery/restoration of the corner.

Corner not set as part of original survey.

1978 - William Kelly "located a 1" iron pin in center of Airport Road set by Becher-Hoppe Engineers, Inc." Kelly made ties and filed a tie sheet.

2023 - I found the existing 1" iron rod 2" below the road surface at the corner location. Ties by Kelly were disturbed, straightend and reset.

Physical description of the monument set:

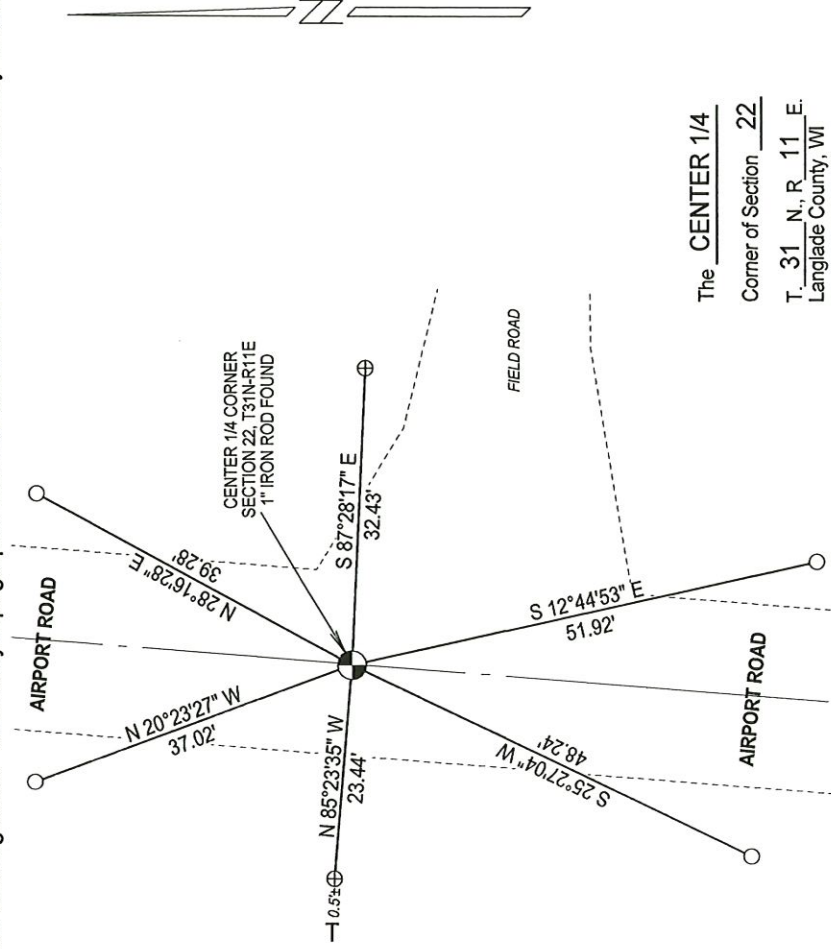
Accepted 1" iron rod as corner location and tied out as shown below.

Describe the accessories used to perpetuate the location of the corner. Include a plan view drawing and indicate accessories found/set. Describe measuring point on bearing trees. Show any topographic features that would aid in future recovery of the corner.

CENTER 1/4 CORNER
SECTION 22, T31N-R11E
1" IRON ROD FOUND
N: 345616.69
E: 632667.28
LANGLADE COUNTY COORDINATES
NAD 83 (2011)
OBSERVED 08-08-2023
RTK GPS

LEGEND

-  1" IRON ROD FOUND
-  SET 3/4" X 30" REBAR FOUND MONUMENT
-  WHITE VINYL T-POST WITH "SURVEY MARKER" SIGN SET



NOTES
- SKETCH NOT DRAWN TO SCALE.
- TIE BEARINGS SHOWN ARE LANGLADE COUNTY GRID BEARINGS.
- ALL TIES MEASURED ELECTRONICALLY WITH TOTAL STATION.

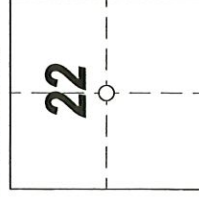
SURVEYORS SEAL



I, Michael J. Hoffmann, certify that the corner location shown on this record was determined by me or under my direction and control and that this U.S. Public Land Survey Monument Record is correct and complete to the best of my knowledge and belief.


Signature 09-27-2023 Date

The CENTER 1/4
Corner of Section 22
T. 31 N., R. 11 E.
Langlade County, WI



○ = Location of corner

INDEX No. **P - 15** 4311122 2020

CERTIFIED LAND CORNER RESTORATION

Index No. P-15

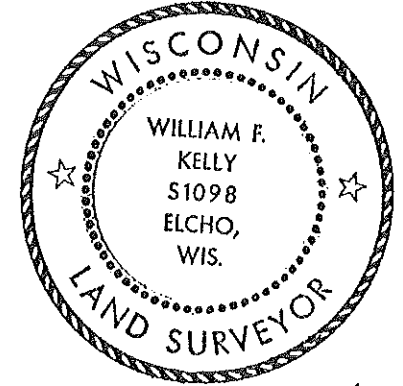
State of Wisconsin }
County of LANGLADE } ss.

History of original corner establishment:

I WILLIAM F. KELLY, do hereby certify that on the 6th day of JULY, 1978, I found evidence of the CENTER OF SECTION corner of SECTION 22 Township 31, North, Range 11 E, Fourth Principal Meridian, as described hereon; and that from this evidence I established a new monument and accessories as described hereon to perpetuate the original location of this corner.

Description of corner evidence found:

LOCATED A 1" IRON PIN IN CENTER OF AIRPORT ROAD SET BY BECHER-HOPPE ENGINEERS, INC.



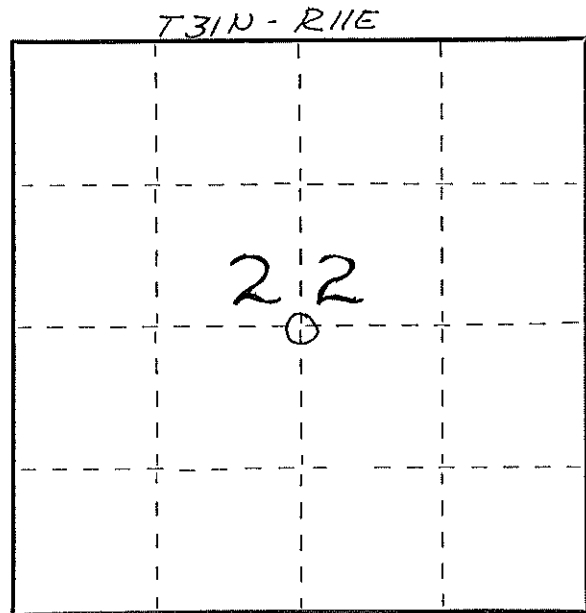
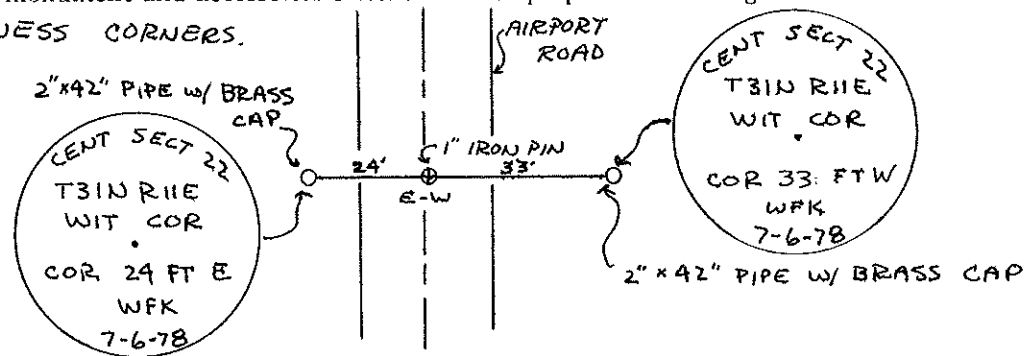
William F. Kelly

Resident witnesses:

.....
.....
.....

Description of monument and accessories I established to perpetuate the original location of this corner.

SET WITNESS CORNERS.



Dated at ELCHO, Wis., this 6th day of JULY, 1978.

Signature William F. Kelly Title REGISTERED LAND SURVEYOR Registration No. 5-1098
(County Surveyor, Registered Land Surveyor, or other duly authorized official)

Office of Register of Deeds, County of, I hereby certify that the within instrument was filed in this office for record on the day of, 19..... at o'clock M.

.....
(Register of Deeds)

By Deputy

○ = Corner monument restored.

FORM 985 H. C. MILLER CO., MILWAUKEE

4311223020