

CERTIFIED LAND CORNER RESTORATION

Index No. Q-14

State of Wisconsin }
County of LANGLADE } ss.

History of original corner establishment:



William F. Kelly

I, WILLIAM F. KELLY, do hereby certify that on the 13TH day of JULY, 19 78, I found evidence of the SOUTH-WEST 1/4 corner of SECTION 22 Township 31, North, Range 11E, Fourth Principal Meridian, as described hereon; and that from this evidence I established a new monument and accessories as described hereon to perpetuate the original location of this corner.

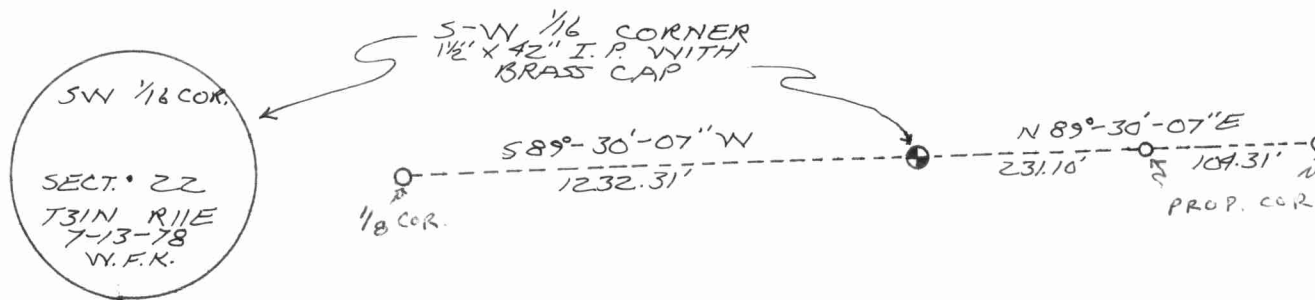
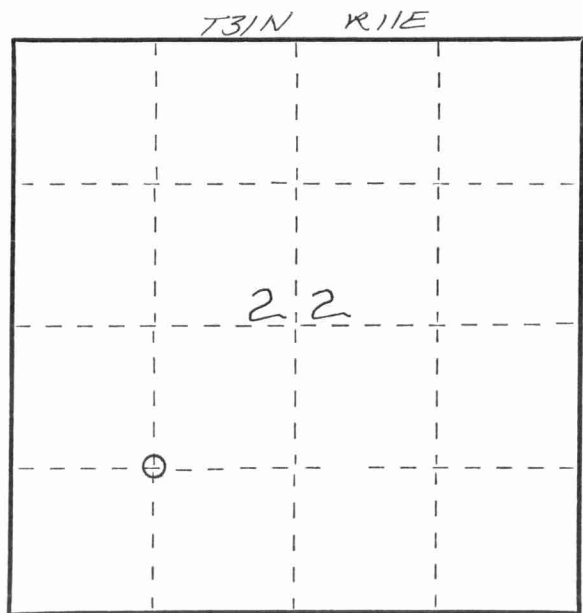
Description of corner evidence found:

CORNER LOCATED FROM CONTROL SURVEY BY BECHER-HOPPE FOR LANGLADE COUNTY AIRPORT.
CORNER IS IN CENTER OF A FARM ROAD, ALL FIELDS AROUND CORNER ARE CULTIVATED.

Resident witnesses:

Description of monument and accessories I established to perpetuate the original location of this corner.

FORM 985 H. C. MILLER CO., MILWAUKEE
4311221030



Dated at ELCHO, Wis., this 13 day of DECEMBER, 19 78.

Signature William F. Kelly Title COUNTY SURVEYOR Registration No. 51098
(County Surveyor, Registered Land Surveyor, or other duly authorized official)

Office of Register of Deeds, County of _____, I hereby certify that the within instrument was filed in this office for record on the _____ day of _____, 19 _____ at _____ o'clock _____ M.

(Register of Deeds)

○ = Corner monument restored.

By _____ Deputy

