

CERTIFIED LAND CORNER RESTORATION

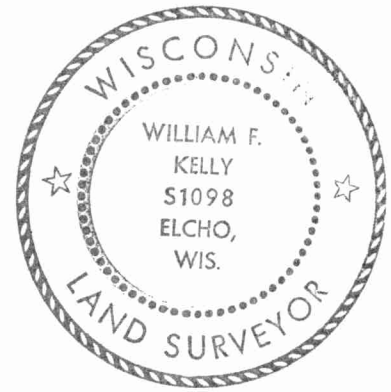
Index No. Q-15

State of Wisconsin }  
County of LANGLADE } ss.

History of original corner establishment:

I, WILLIAM F. KELLY, do hereby certify that on the 10<sup>th</sup> day of July, 1978, I found evidence of the SOUTH 1/8 corner of SECTION 22 Township 31, North, Range 11E, Fourth Principal Meridian, as described hereon; and that from this evidence I established a new monument and accessories as described hereon to perpetuate the original location of this corner.

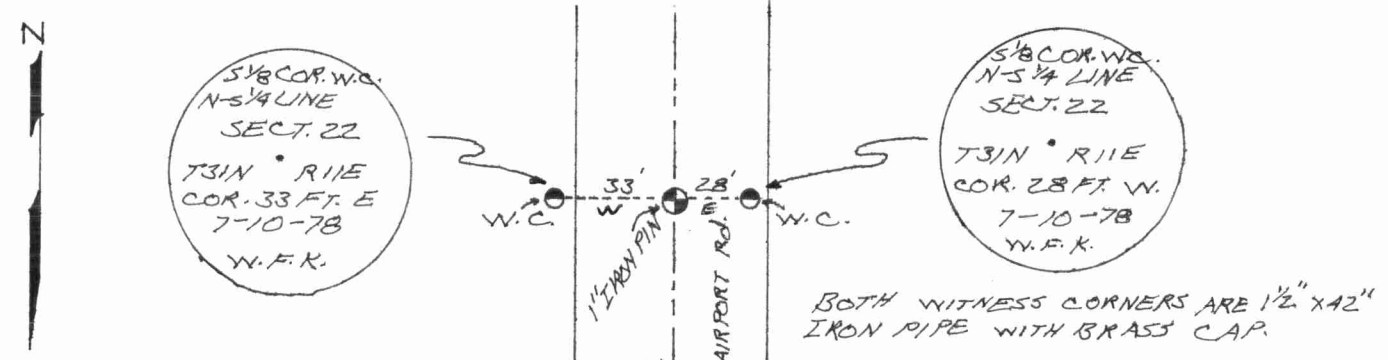
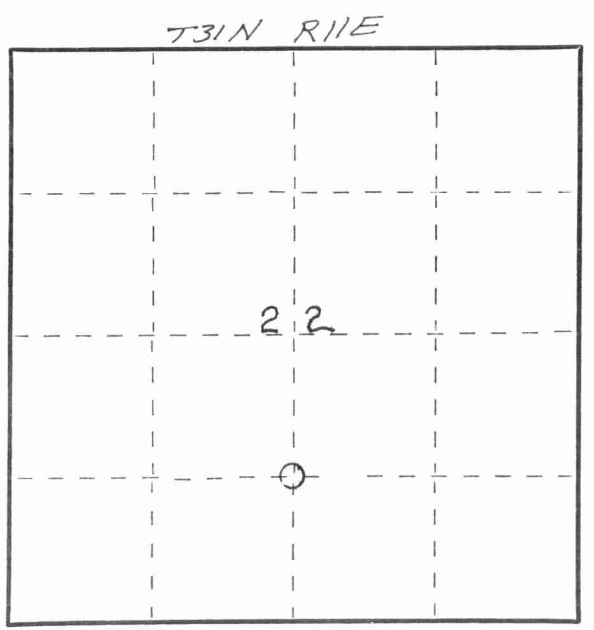
Description of corner evidence found:  
LOCATED S 1/8 CORNER FROM BECHER-HAPPE CONTROL SURVEY OF AIRPORT PROPERTY. FOUND 1" IRON PIN IN PLACE.



Resident witnesses:

.....  
.....  
.....

Description of monument and accessories I established to perpetuate the original location of this corner.



Dated at ELCHO, Wis., this 16<sup>th</sup> day of SEPTEMBER, 1978.

Signature William F. Kelly Title County Surveyor Registration No. S 1098  
(County Surveyor, Registered Land Surveyor, or other duly authorized official)

Office of Register of Deeds, County of....., I hereby certify that the within instrument was filed in this office for record on the..... day of....., 19..... at..... o'clock..... M.

.....  
(Register of Deeds)

By..... Deputy

FORM 985 M. C. MILLER CO., MILWAUKEE  
4311221020

○ = Corner monument restored.

