

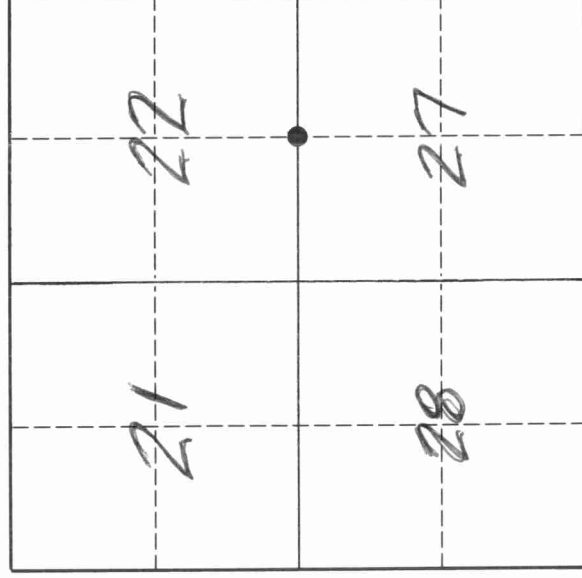
43111220020

U. S. PUBLIC LAND SURVEY MONUMENT RECORD

INSTRUCTIONS:

This record shall show the location of the corner and shall include all of the following nine elements (a through i).

- (a) Identify the corner by reference to the U.S. public land survey system.
- = Corner monument restored.



The South 1/4 corner of Section 22, Township 31 North, Range 11 East, Langlade County, Wisconsin.

T. 31 N., R. 11 E.

- (b) Describe any record evidence, monument evidence, occupational evidence, testimonial evidence or any other material evidence you considered, and whether the monument was found or placed.
 The original corner was established in 1860 by Hiram C. Fellows. Original BT's: birch, 10", S19W, 18 lks., and a w. pine, 7", N5E, 17 lks. In 1899, B.F. Dorr found both original BT's and marked a new BT. In 1915, Hutchinson described the corner as a "stone in road". In the early 1970's, Becher-Hoppe Engineering drove and iron rod for the corner. In 1978, former surveyor Kelly perpetuated the iron rod set by Becher-Hoppe. On 10/11/95 we dug with a backhoe and found a round topped field stone with an "X" chiseled in the top, 1.7' below the road surface and approximately 4' east of the iron rod set by Becher-Hoppe. I accept the stone found as the best evidence of the original corner location.

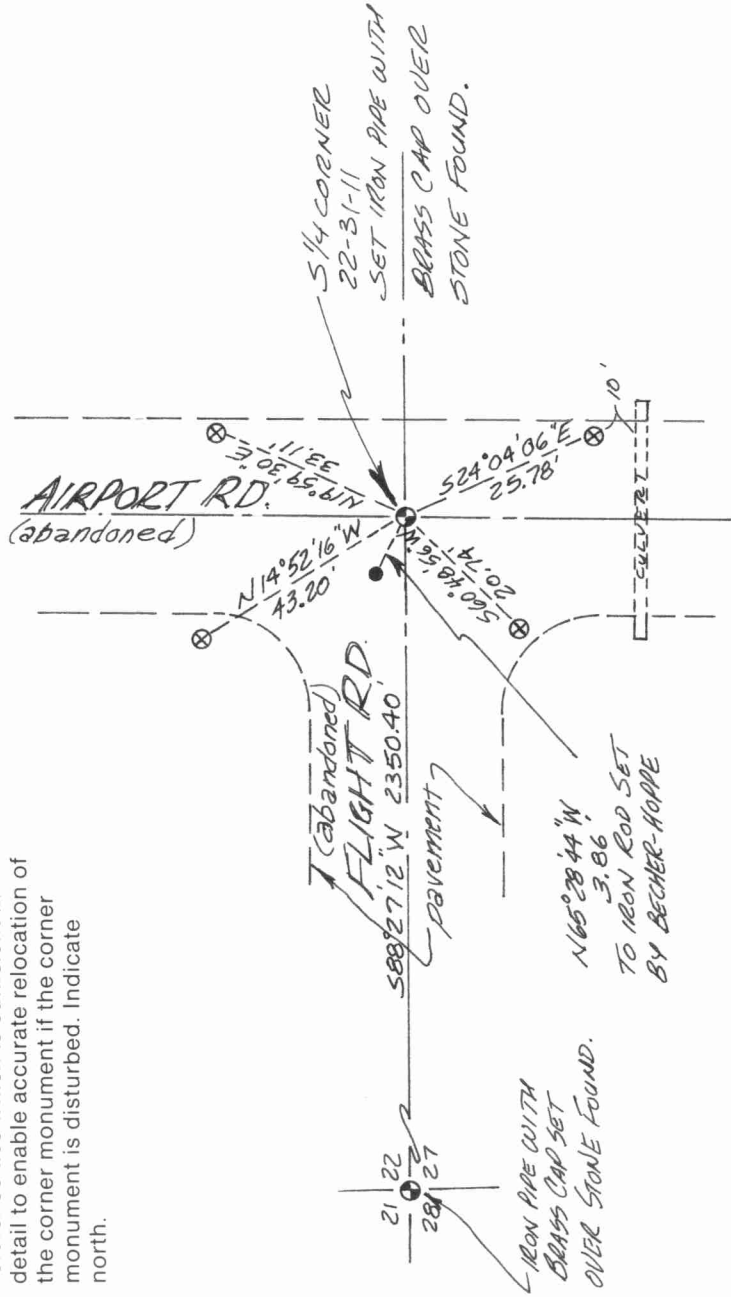
- (c) In the plan view drawing below, provide reference ties to at least 4 witness monuments, or, if the location is within a municipality, to at least 2 witness monuments. (Witness monuments shall be made of concrete, natural stone, iron or other equally durable material.)
 Describe witness monuments.

FB6-139

- ⊗ = 3/4" x 30" iron rod with red plastic cap set flush with ground
- Set 3/4" re-bar on north edge of stone found.
- Set 1 1/2" x 18" iron pipe with 4" brass cap flush with road surface.

- (d) Show a plan view drawing depicting the relevant monuments and reference ties which is sufficient in detail to enable accurate relocation of the corner monument if the corner monument is disturbed. Indicate north.

STATE PLANE GRID



R15

4311720020

Describe any material discrepancy between the location of the corner as restored or reestablished and the location of that corner as previously restored or reestablished by distance and direction. Show the discrepancy on the plan view drawing under (d), above. Show the distances between the corner as previously restored or reestablished and (1) the corner as restored or reestablished, and (2) to at least 2 of the witness monuments shown on the drawing in (d), above.

See sketch on front side for location of iron rod set by Becher-Hoppe.

- (f) Was the corner restored through acceptance of (1) an obliterated evidence location, or, (2) a found perpetuated location?
A found perpetuated location.

- (g & h) Was the corner reestablished through lost corner proportionate methods? If so, show the method, including the directions and distances to other public land survey corners used as evidence or used for proportioning in determining the corner location.

No.



- (i) I, David E. Tlusty, Langlade County Surveyor,
(type or print name)

certify that the corner location shown on this record was determined by me or under my direction and control and that this U.S. Public Land Survey Monument Record is correct and complete to the best of my knowledge and belief.


Signature

10/18/95
Date