

4311121 2020

U.S. PUBLIC LAND SURVEY MONUMENT RECORD

(Prepared and as required by S. A-E 7.08 WI Administrative Code)

The CENTER 1/4 corner of Section 21, T. 31 N., R. 11 E., Langlade County, WI
Corner was (check all that apply)

- Restored through acceptance of an obliterated evidence location.
- Restored through acceptance of a found perpetuated location.
- Determined to be lost and re-established through proportionate methods. (show bearings and distances to PLSS corners used for proportioning.)
- Restored/recovered/re-established in a location that differs from a previously established position. (Show difference in plan view below.)
- Check here if additional information is shown on the reverse side of this form.

Describe record evidence, recovered physical evidence, occupational evidence, testimonial evidence, and all other evidence considered in the recovery/restoration of the corner.

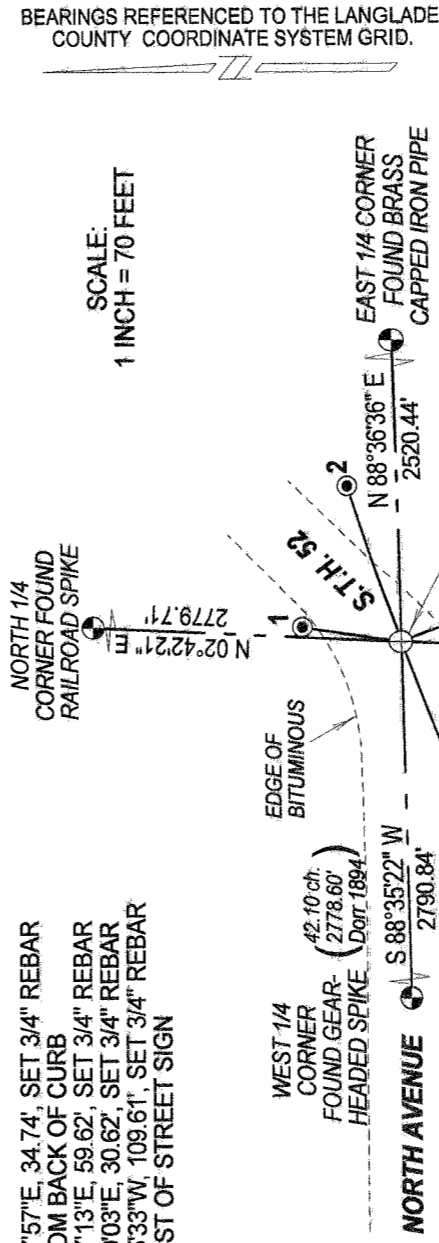
1860 - Center 1/4 corner was not set in the original GLO survey.
 1894 - Dorr surveyed Section 21, indicated 42.10 chains from Center 1/4 corner to West 1/4 corner, and 40.55 chains from Center 1/4 corner to South 1/4 corner.
 1903 - Dorr set boulder for Center 1/4 corner, 4" x 6" x 22" with cross on top.
 1985 - Abendroth found a PK nail at the Center 1/4 corner, surveyed Section 21, and noted that the location of the "corner fit protracted distance and interior fences." Tied to residence corner, building corner, street sign, and red pine tree.
 1993 - County Surveyor Tlusty, prior to road re-surfacing, surveyed the PK nail and later converted the location to county coordinates.
 2009 - I set corner at coordinates supplied by County Surveyor. This location matches Abendroth's ties to each building corner. The pine tree tie was gone, the street sign has been changed.

Physical description of the monument set:

2009 - I set a 3" Mag Nail at the corner location and tied it out as follows.

Describe the accessories used to perpetuate the location of the corner. Include a plan view drawing and indicate accessories found/set. Describe measuring point on bearing trees. Show any topographic features that would aid in future recovery of the corner.

- 1 = N08°47'57"E, 34.74'; SET 3/4" REBAR
1± FROM BACK OF CURB
- 2 = N72°27'13"E, 59.62'; SET 3/4" REBAR
- 3 = S20°39'03"E, 30.62'; SET 3/4" REBAR
- 4 = S68°55'33"W, 109.61'; SET 3/4" REBAR
4± WEST OF STREET SIGN



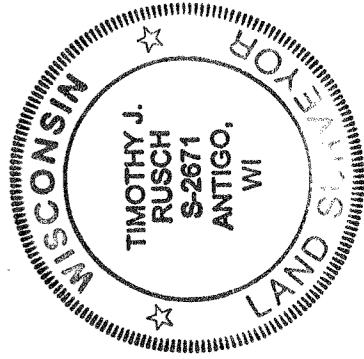
SCALE:
1 INCH = 70 FEET

BEARINGS REFERENCED TO THE LANGLADE COUNTY COORDINATE SYSTEM GRID.

The CENTER 1/4
 Corner of Section 21
 T. 31 N., R. 11 E.
 Langlade County, WI

SOUTH 1/4 CORNER
 PER COUNTY
 SURVEYOR RECORD

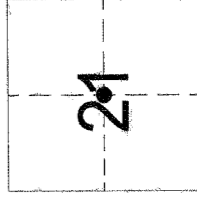
SURVEYORS SEAL



I, Timothy J. Rusch certify that the corner location shown on this record was determined by me or under my direction and control and that this U.S. Public Land Survey Monument Record is correct and complete to the best of my knowledge and belief.

Timothy J. Rusch 09/25/2009
 Signature Date

INDEX No. **P11** (31-11)



● = Location of corner