

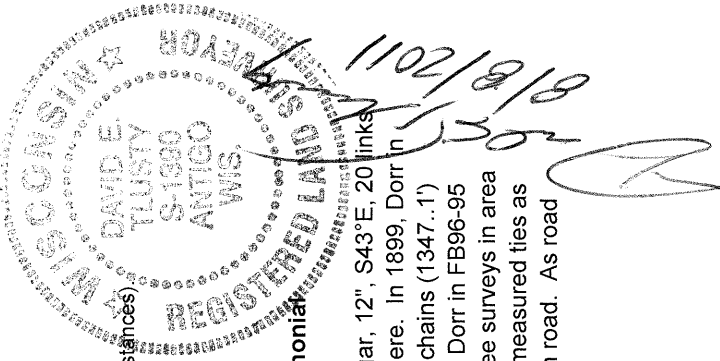
# LANGLADE COUNTY U.S. PUBLIC LAND CORNER RESTORATION

The South Quarter corner of Section 21, T. 31 N., R. 11 E., Langlade County, WI.

**Corner was: (check all that apply)**

- Restored through acceptance of an obliterated evidence location.
- Restored through acceptance of a found perpetuated location.
- Determined to be lost and re-established through proportionate methods.
  - Show bearings and distances to PLSS corners used for proportioning, and show original distances.
  - Restored/recovered/re-established in a location that differs from a previously established position.
- (Show difference in plan view below).
  - Check here if additional information is shown on the reverse side of this form.

4311121 0020



**Describe record evidence, recovered physical evidence, occupational evidence, testimonial evidence and all other evidence considered in the recovery/restoration of the corner.**

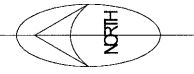
The original corner was established in 1860 by Hiram C. Fellows. Original bearing trees: sugar, 12", S43°E, 20 links and a birch, 10", N76W, 8 links. In 1895, Dorr in FB97-3, measured 38.74 chains East from here. In 1899, Dorr in FB97-62, measured 40.66 chains west from here. In 1903, in FB97-108, he measured 20.41 chains (1347.1') west from here. He described this quarter corner as a gr boulder 4" x 4" & X on top. In 1907, Dorr in FB96-95 measured 40.925 chains north from here. In 1992, Ed Abendroth "Found PK nail in place three surveys in area were tied into said nail. Line of occupation to south (fence and hedge row)." He marked and measured ties as shown on a tie sheet in the County Surveyors records. On 7/06/11, I found a RR spike 0.2' in road. As road is to be paved over in the near future, I made new ties as shown below.

**Physical description of the monument set:**

I left the existing railroad spike in place.  
On 8/01/11, in new pavement, I set a MAG nail with a metal tab, from my ties, over the existing RR spike.

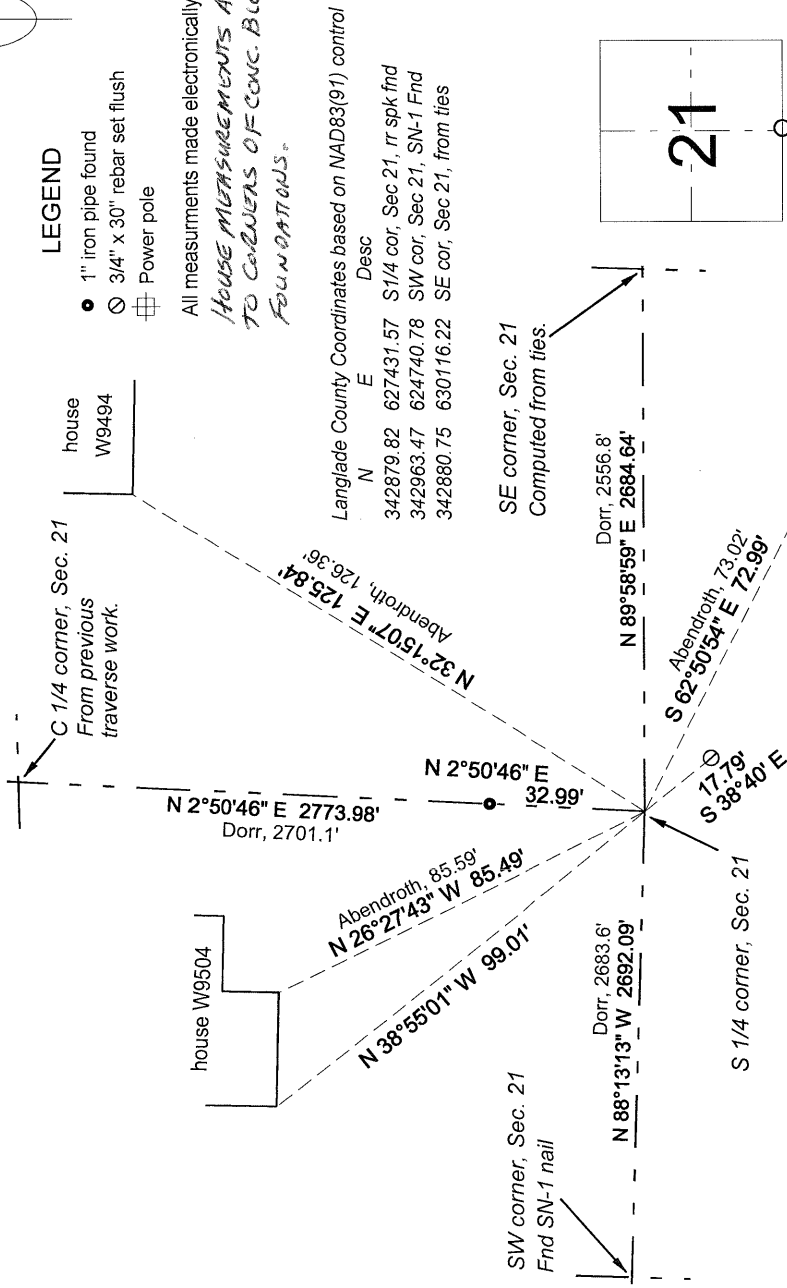
**Describe the accessories used to perpetuate the corner. Include a plan view drawing and accessories found/set. Describe measuring point on bearing trees. Show any topographic features that would aid in future recovery of the corner.**

Field book: FB9-96



- LEGEND**
- 1" iron pipe found
  - 3/4" x 30" rebar set flush
  - ⊕ Power pole

All measurements made electronically.  
*HOUSE MEASUREMENTS ARE TO CORNERS OF CONC. BLOCK FOUNDATIONS.*



○ = corner perpetuated  
The South Quarter corner of Section 21, T. 31 N., R. 11 E., Langlade County, WI

Index No.                      R11 31-11

I, David E. Tlusty, Registered Land Surveyor, as Langlade County Surveyor, certify that the corner location on this record was determined by me and that this U.S. Public Land Survey Monument Record is correct to the best of my knowledge and belief.