

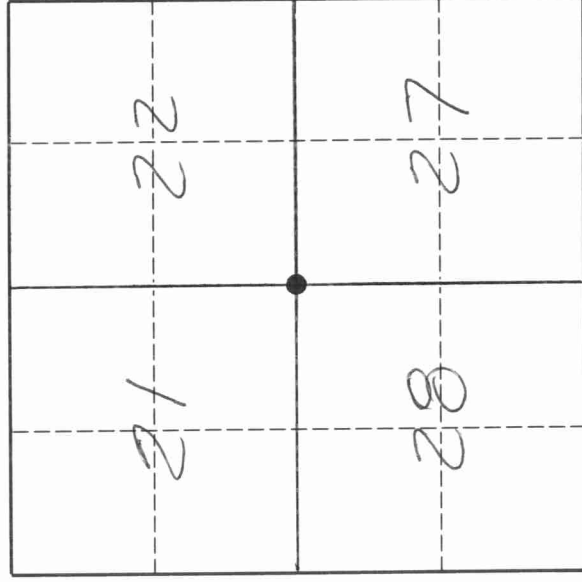
43111a10000

U. S. PUBLIC LAND SURVEY MONUMENT RECORD

INSTRUCTIONS:

This record shall show the location of the corner and shall include all of the following nine elements (a through i).

- (a) Identify the corner by reference to the U.S. public land survey system.
- = Corner monument restored.



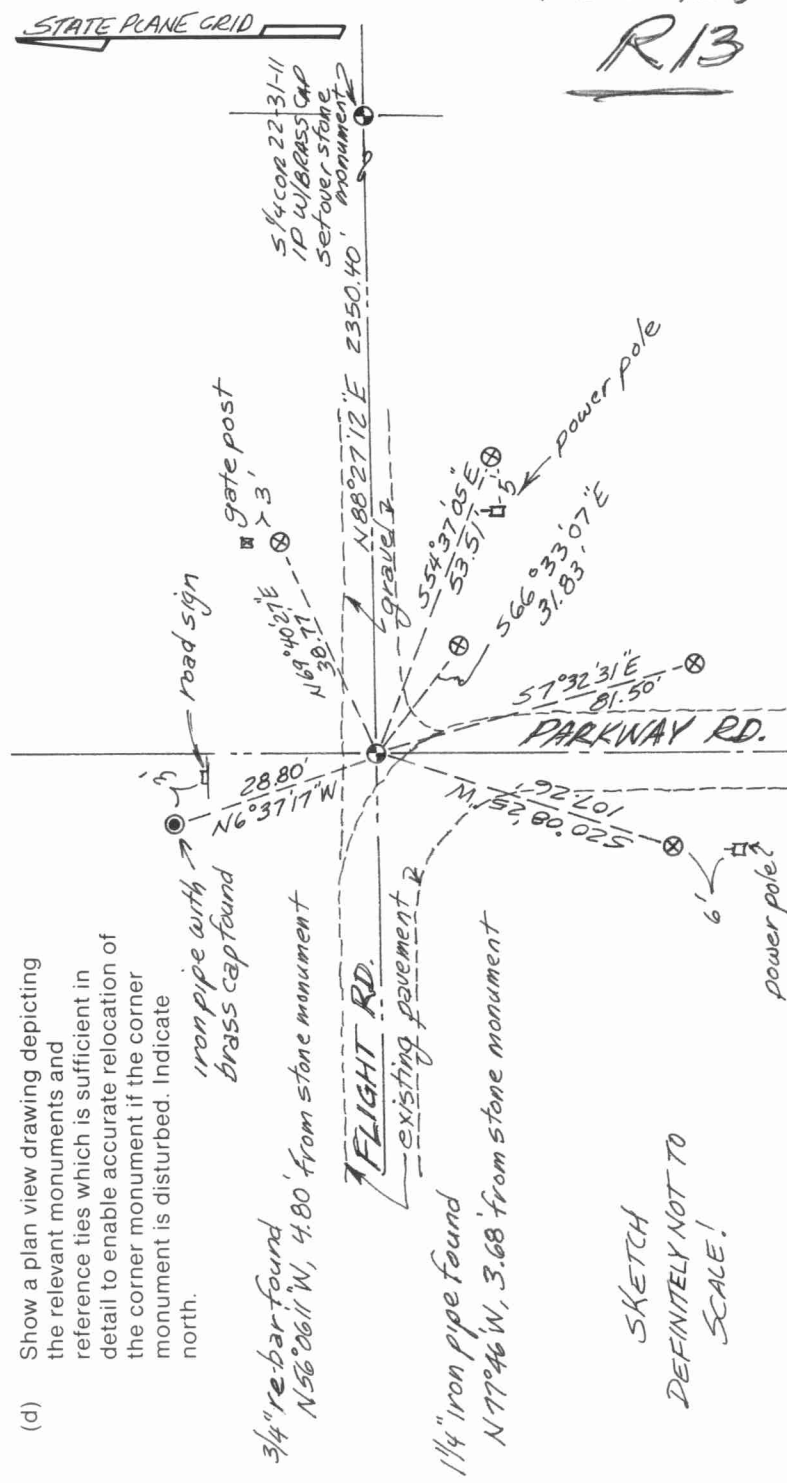
T. 31 N., R. 11 E.

The Southeast Corner of Section 21, Township 31 North, Range 11 East, Langlade County, Wisconsin.

- (b) Describe any record evidence, monument evidence, occupational evidence, testimonial evidence or any other material evidence you considered, and whether the monument was found or placed.
The original corner was established in 1860 by Hiram C. Fellows. Original BT's: birch, 10", S85E, 33 lks., and a sugar, 12", N57W, 26 lks. In 1895, B.F. Dorr (FB97-3) found both original BT's and marked a new pine stump. In the early 1970's, Becher-Hoppe Engineers set an iron rod for the corner. In 1978, former surveyor Kelly perpetuated the location of the iron rod set by BecherHoppe. On 10/11/95 we dug with a backhoe and found a round top field stone with an "X" chiseled in the top, down 1.5' below the road surface. I accepted the location of the stone found as the best evidence of the original corner location. Both Dorr and Hutchinson mentioned stones set at other corners in the area. I believe that Dorr set this stone, even though I don't have his notes stating this. The stone found is about 4' east of two iron markers found (see sketch below).

- (c) In the plan view drawing below, provide reference ties to at least 4 witness monuments, or, if the location is within a municipality, to at least 2 witness monuments. (Witness monuments shall be made of concrete, natural stone, iron or other equally durable material.)
Describe witness monuments.
⊗ 3/4" x 30" re-bar with red plastic cap set flush with ground.
⊗ 3/4" x 30" re-bar on north side of stone monument
⊗ Set 1 1/2" x 16" iron pipe with 4" brass cap over stone monument found.

- (d) Show a plan view drawing depicting the relevant monuments and reference ties which is sufficient in detail to enable accurate relocation of the corner monument if the corner monument is disturbed. Indicate north.



SKETCH
DEFINITELY NOT TO
SCALE!

FB6-138
R13

